

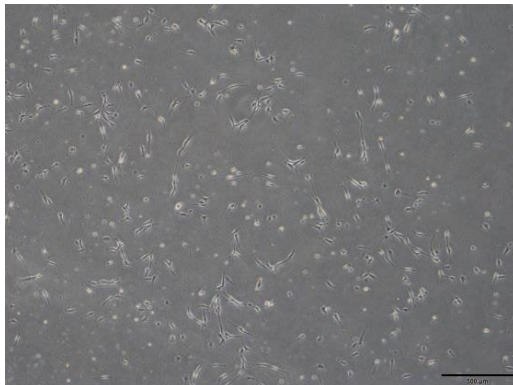
Isolation of adipose-derived stem cells (ADSCs) from adipose tissue using StemFit® For MSC

Materials Required

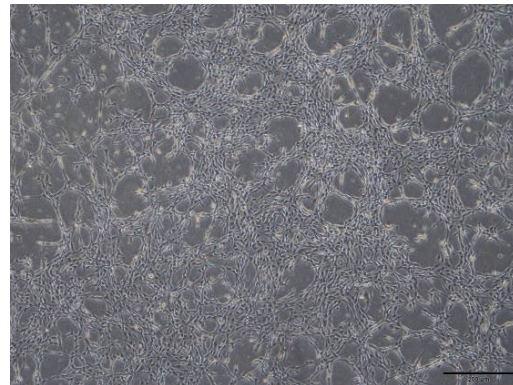
- Adipose tissue
- StemFit® For MSC (AMSBIO #SFMSC-A3)
- Synthemax II (Corning #3535) or Vitronectin-C (Vitronectin 20-398 aa)
- Collagenase

Method

1. Coat the plate/dish with Synthemax II ($5 \mu\text{g}/\text{cm}^2$) or Vitronectin-C ($1.5 \mu\text{g}/\text{cm}^2$)
2. Obtain fresh adipose tissue and process with collagenase. Determine the cell concentration.
3. Seed cells at $2-6 \times 10^3$ cells/ cm^2 in StemFit® For MSC medium.
4. Culture the cells at 37°C , 5% CO_2 for 5-7 days until confluent without medium change
5. Subculture when cells are approximately 70-90% confluent.



Day 4



Day 7

AMSBIO | www.amsbio.com | info@amsbio.com



UK & Rest of the World
184 Park Drive, Milton Park
Abingdon OX14 4SE, U.K.
T: +44 (0) 1235 828 200
F: +44 (0) 1235 820 482



North America
1035 Cambridge Street,
Cambridge, MA 02141.
T: +1 (617) 945-5033 or
T: +1 (800) 987-0985
F: +1 (617) 945-8218



Germany
Bockenheimer Landstr. 17/19
60325 Frankfurt/Main
T: +49 (0) 69 779099
F: +49 (0) 69 13376880



Switzerland
Via Lisano 3
(CP.683)
6900 Massagno
T: +41 (0) 91 604 55 22
F: +41 (0) 91 605 17 85