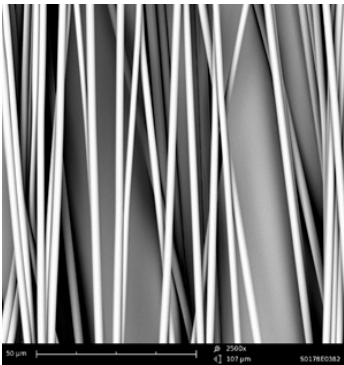


# MYELINATION ASSAY

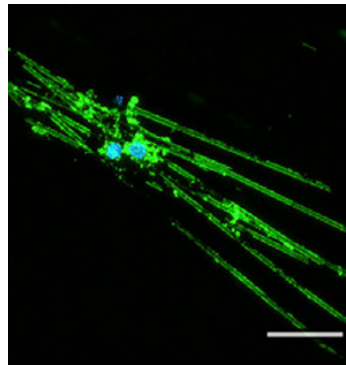
## HIGH THROUGH MYELINATION ASSAY

Our aligned electrospun Mimetix scaffold allows:

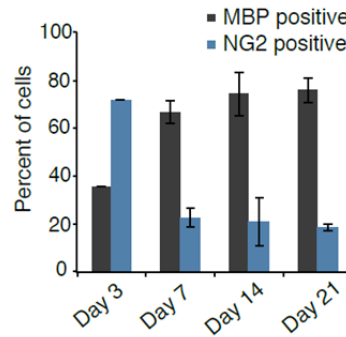
- Differentiation of more than 80% of oligodendrocyte precursors into mature oligodendrocytes in 14 days
- Production of sheath lengths comparable to in vivo situation within 7 days by 90% of the oligodendrocytes
- Physical guidance and support for Schwann cells



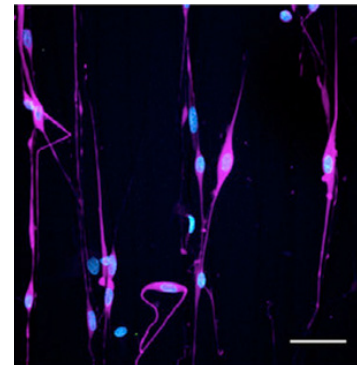
SEM image of the aligned 2 µm diameter PLLA fibres in the Mimetix scaffold



Cortical oligodendrocyte precursors differentiating into active oligodendrocytes and lay myelin on the Mimetix scaffold in the absence of neurons. Cells are stained after 14 days with myelin basic protein (green) and Hoechst (blue).



Percent of oligodendrocyte precursors (NG2) and oligodendrocytes (MBP). More than 600 cells were counted per condition. Mean and standard deviation are shown for three experiments.




Schwann cells were grown for 21 days and stained with anti-S-100 (purple) and Hoechst (blue)

Description	Pack Size	Catalogue No.
96-well plate with Mimetix aligned fibres (PLLA, 2 micron fibre diameter, 2-4 micron thick)	1 plate	AMS.TECL-005-1X
	8 plates	AMS.TECL-005-8X
12-well plate containing cell crown inserts of Mimetix aligned fibres (PLLA, 2 micron fibre diameter, 2-4 microns thick)	1 plate	AMS.TECL-006-1X
	8 plates	AMS.TECL-006-8X
384 well plate, Mimetix aligned fibres, 2 micron fibre diameter with rhodamine, sterile-PLLA-Fixed scaffold	1 plate	AMS.TECL-015-1X
	8 plates	AMS.TECL-015-8X

AMSBIO | [www.amsbio.com](http://www.amsbio.com) | [info@amsbio.com](mailto:info@amsbio.com)

V1

 **UK & Rest of the World**  
 184 Park Drive, Milton Park  
 Abingdon OX14 4SE, U.K.  
 T: +44 (0) 1235 828 200  
 F: +44 (0) 1235 820 482

 **North America**  
 1035 Cambridge Street,  
 Cambridge, MA 02141.  
 T: +1 (617) 945-5033 or  
 T: +1 (800) 987-0985  
 F: +1 (617) 945-8218

 **Germany**  
 Bockenheimer Landstr. 17/19  
 60325 Frankfurt/Main  
 T: +49 (0) 69 779099  
 F: +49 (0) 69 13376880

 **Switzerland**  
 Centro Nord-Sud 2E  
 CH-6 934 Bioggio-Lugano  
 T: +41 (0) 91 604 55 22  
 F: +41 (0) 91 605 17 85