

Anti-PVRL1 MAB Antibody Clone OTI1B6

TA503469 PVRL1 mouse monoclonal antibody, clone OTI1B6 (formerly 1B6)

Immunogen Full length human recombinant protein of human PVRL1(NP_002846) produced in HEK293T cell.

Clone Name Clone OTI1B6 Isotype IgG2a

Species Reactivity Human

Concentration 1 mg/ml

Guaranteed Application WB, IHC, IF

Suggested Dilutions WB 1:2000, IHC 1:150, IF 1:100,

Predicted MW 54 kDa

Buffer PBS (PH 7.3) containing 1% BSA, 50% glycerol and 0.02% sodium azide.

Purification Purified from mouse ascites fluids by affinity chromatography

Reference Data

Target Name Homo sapiens nectin cell adhesion molecule 1 (NECTIN1), transcript variant 1

Alternative Name CD111; CLPED1; ED4; HlgR; HV1S; HVEC; nectin-1; OFC7; PRR; PRR1; PVRL1; PVRR; PVRR1; SK-12

Database NP_002846 Entrez Gene 5818 Human

Function This gene encodes an adhesion protein that plays a role in the organization of adherens junctions and tight junctions in epithelial and endothelial cells. The protein is a calcium(2+)-independent cell-cell adhesion molecule that belongs to the immunoglobulin superfamily and has 3 extracellular immunoglobulin-like loops, a single transmembrane domain (in some isoforms), and a cytoplasmic region. This protein acts as a receptor for glycoprotein D (gD) of herpes simplex viruses 1 and 2 (HSV-1, HSV-2), and pseudorabies virus (PRV) and mediates viral entry into epithelial and neuronal cells. Mutations in this gene cause cleft lip and palate/ectodermal dysplasia 1 syndrome (CLPED1) as well as non-syndromic cleft lip with or without cleft palate (CL/P). Alternative splicing results in multiple transcript variants encoding proteins with distinct C-termini. [provided by RefSeq].

AMSBIO | www.amsbio.com | info@amsbio.com

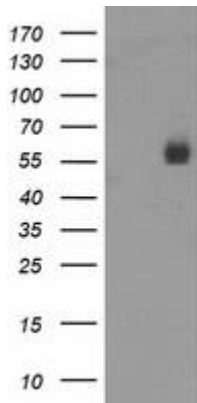
 **UK & Rest of the World**
184 Park Drive, Milton Park
Abingdon OX14 4SE, UK
T: +44 (0)1235 828 200
F: +44 (0) 1235 820 482

 **North America**
1035 Cambridge Street,
Cambridge, MA 02141
T: +1 (617) 945-5033 or
T: +1 (800) 987-0985
F: +1 (617) 945-8218

 **Germany**
Bockenheimer Landstr. 17/19
60325 Frankfurt/Main
T: +49 (0) 69 779099
F: +49 (0) 69 13376880

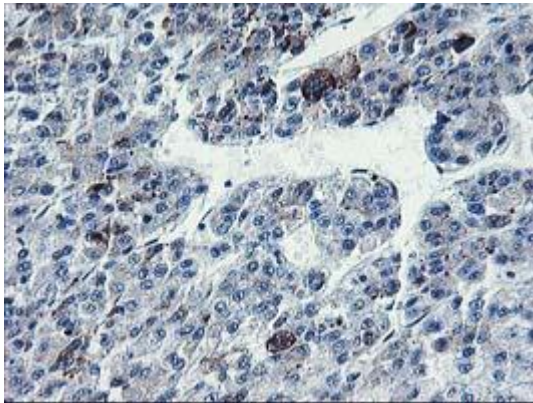
 **Switzerland**
Centro Nord-Sud 2E
CH-6934 Bioggio-Lugano
T: +41(0) 91 604 55 22
F: +41(0) 91 605 17 85

WB Image



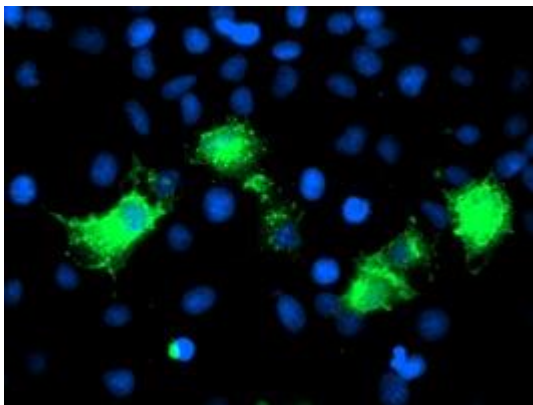
HEK293T cells were transfected with the pCMV6-ENTRY control (Left lane) or pCMV6-ENTRY PVRL1 (RC211214, Right lane) cDNA for 48 hrs and lysed. Equivalent amounts of cell lysates (5 ug per lane) were separated by SDS-PAGE and immunoblotted with anti-PVRL1

IHC Image



Immunohistochemical staining of paraffin-embedded Carcinoma of Human liver tissue using anti-PVRL1 mouse monoclonal antibody. (Heat-induced epitope retrieval by 10mM citric buffer, pH6.0, 100C for 10min, TA503469)

IF Image



Anti-PVRL1 mouse monoclonal antibody (TA503469) immunofluorescent staining of COS7 cells transiently transfected by pCMV6-ENTRY PVRL1(RC211214).

AMSBIO | www.amsbio.com | info@amsbio.com

 **UK & Rest of the World**
184 Park Drive, Milton Park
Abingdon OX14 4SE, UK
T: +44 (0)1235 828 200
F: +44 (0) 1235 820 482

 **North America**
1035 Cambridge Street,
Cambridge, MA 02141
T: +1 (617) 945-5033 or
T: +1 (800) 987-0985
F: +1 (617) 945-8218

 **Germany**
Bockenheimer Landstr. 17/19
60325 Frankfurt/Main
T: +49 (0) 69 779099
F: +49 (0) 69 13376880

 **Switzerland**
Centro Nord-Sud 2E
CH-6934 Bioggio-Lugano
T: +41(0) 91 604 55 22
F: +41(0) 91 605 17 85