

**Name: Purified S100A12 mouse monoclonal antibody, clone 1D1**  
**Product Data Sheet**

**Catalog: TA502495**

Gene Name: Homo sapiens S100 calcium binding protein A12 (S100A12)  
 GeneBank accession: NM\_005621  
 Isotype: IgG1

Reactivity: Human  
 Test application: WB  
 Clone Name: clone 1D1

**Gene Synonym:** CAAF1; CAGC; CGRP; ENRAGE; MRP-6; MRP6; p6

**Validation Data:**

**Western Blot**

**Guaranteed Applications:** WB, IHC

**Suggested Dilutions:** WB 1:500, IHC 1:150,

**Immunogen:** Full length human recombinant protein of human S100A12 (NP\_005612) produced in HEK293T cell.

**Components:**

- Purified S100A12 mouse monoclonal antibody, clone 1D1 (TA502495)
- 1 vial of 20ug myc-DDK tagged S100A12 HEK293T over-expression lysate lyophilized in RIPA buffer (LC401723) (Reconstitute into 20ul of 1x SDS sample buffer before loading)

**Amount:**

TA502495-100 100ul

**Concentration:** 0.5~1.0 mg/ml (Lot Dependent)

**Storage Condition:** Shipped at 4C. Upon delivery store at -20C. Dilute in PBS (pH7.3) before use. Stable for 12 months from date of receipt. Avoid repeated freeze-thaws.

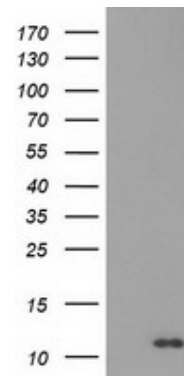
**Buffer:** PBS (PH 7.3) containing 1% BSA, 50% glycerol and 0.02% sodium azide.

**Purification:**

Purified from mouse ascites fluids by affinity chromatography

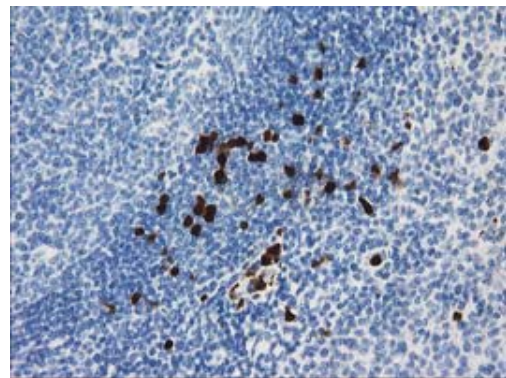
**Background:**

The protein encoded by this gene is a member of the S100 family of proteins containing 2 EF-hand calcium-binding motifs. S100 proteins are localized in the cytoplasm and/or nucleus of a wide range of cells, and involved in the regulation of a number of cellular processes such as cell cycle progression and differentiation. S100 genes include at least 13 members which are located as a cluster on chromosome 1q21. This protein is proposed to be involved in specific calcium-dependent signal transduction pathways and its regulatory effect on cytoskeletal components may modulate various neutrophil activities. [provided by RefSeq].



HEK293T cells were transfected with the pCMV6-ENTRY control (Left lane) or pCMV6-ENTRY S100A12 (RC210002, Right lane) cDNA for 48 hrs and lysed. Equivalent amounts of cell lysates (5 ug per lane) were separated by SDS-PAGE and immunoblotted with anti-S100A12.

**IHC data**



Immunohistochemical staining of paraffin-embedded Human lymph node tissue using anti-S100A12 mouse monoclonal antibody. (TA502495)

**Related Product:**

TrueORF cDNA clones  
 VERIFY Tagged Antigen lysates  
 HuSH-29 shRNA  
 Western Blot reagents  
 Anti-myc/DDK tag antibodies

***This product is to be used for laboratory only. Not for diagnostic or therapeutic use.***



**UK & Rest of World**

184 Milton Park, Abingdon  
 OX14 4SE, Oxon, UK  
 Tel: +44 (0) 1235 828 200  
 Fax: +44 (0) 1235 820 482

**Switzerland**

Centro Nord-Sud 2E  
 CH-6934 Bioggio-Lugano  
 Tel: +41 (0) 91 604 55 22  
 Fax: +41 (0) 91 605 17 85

**Deutschland**

Bockenheimer Landstr. 17/19  
 60325 Frankfurt/Main  
 Tel: +49 (0) 69 779099  
 Fax: +49 (0) 69 13376880

**North America**

23591 El Toro Rd, Suite #180  
 Lake Forest, CA 92630  
 Tel: +1 800 987 0985  
 Fax: +1 949 265 7703