

Name: anti-SLC18A2 (VMAT2) mouse monoclonal antibody, clone OTI9E11 (formerly 9E11)

Catalog: TA500506

Product Data Sheet - TRUEMAB

Components:	• anti-SLC18A2 (VMAT2) mouse monoclonal antibody, clone OTI9E11 (formerly 9E11) (TA500506)
Amount:	100ul
Immunogen:	Full-length protein expressed in 293T cell transfected with human SLC18A2 expression vector .
Host:	Mouse
Isotype:	IgG1
Species Reactivity:	Human
Guaranteed Applications:	WB, IHC, IF, FC
Suggested Dilutions:	WB 1:2000, IHC 1:50, IF 1:100, FLOW 1:100,
Concentration:	1 mg/ml
Buffer:	PBS (pH 7.3) containing 1% BSA, 50% glycerol and 0.02% sodium azide.
Purification:	Purified from mouse ascites fluids by affinity chromatography
Storage Condition:	Shipped at -20C or with ice packs. Upon delivery store at -20C. Dilute in PBS (pH7.3) if necessary. Stable for 12 months from date of receipt. Avoid repeated freeze-thaws.

Target

Target Name:	solute carrier family 18 member A2
Alternative Name:	SVAT SVMT VAT2 VMAT2
Database Link:	NP_003045 Entrez Gene 6571 Human
Function:	The vesicular monoamine transporter acts to accumulate cytosolic monoamines into synaptic vesicles, using the proton gradient maintained across the synaptic vesicular membrane. Its proper function is essential to the correct activity of the monoaminergic systems that have been implicated in several human neuropsychiatric disorders. The transporter is a site of action of important drugs, including reserpine and tetrabenazine.

This product is to be used for laboratory only. Not for diagnostic or therapeutic use.

AMSBIO | www.amsbio.com | info@amsbio.com

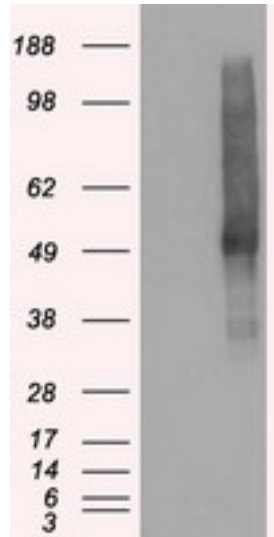
 **UK & Rest of the World**
184 Park Drive, Milton Park
Abingdon OX14 4SE, UK
T: +44 (0)1235 828 200
F: +44 (0) 1235 820 482

 **North America**
1035 Cambridge Street,
Cambridge, MA 02141
T: +1 (617) 945-5033 or
T: +1 (800) 987-0985
F: +1 (617) 945-8218

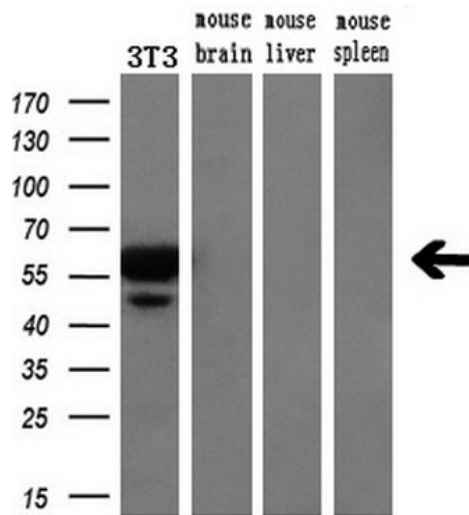
 **Germany**
Bockenheimer Landstr. 17/19
60325 Frankfurt/Main
T: +49 (0) 69 779099
F: +49 (0) 69 13376880

 **Switzerland**
Centro Nord-Sud 2E
CH-6934 Bioggio-Lugano
T: +41(0) 91 604 55 22
F: +41(0) 91 605 17 85

Validation Data



HEK293T cells were transfected with the pCMV6-ENTRY control (Left lane) or pCMV6-ENTRY SLC18A2 (RC221342, Right lane) cDNA for 48 hrs and lysed. Equivalent amounts of cell lysates (5 ug per lane) were separated by SDS-PAGE and immunoblotted with anti-SLC18A2.



Western blot analysis of extracts (10ug) from a mouse cell line and 3 different mouse tissues by using anti-SLC18A2 monoclonal antibody.(1:200)

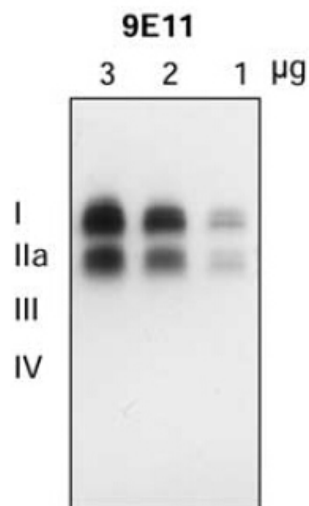
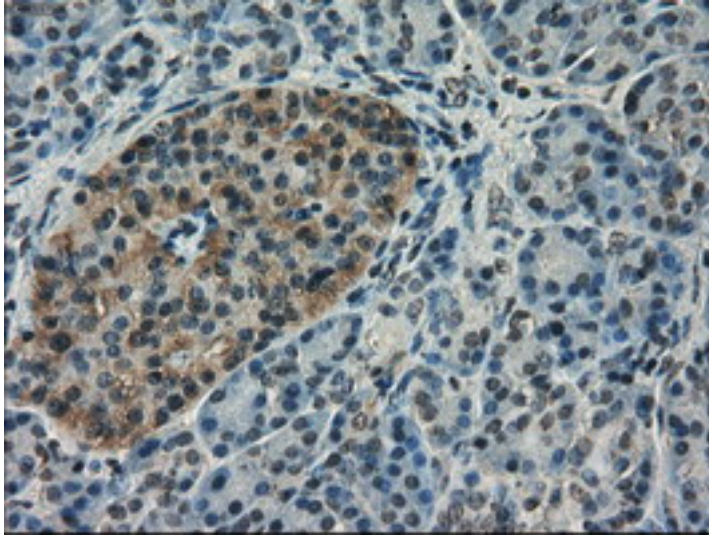
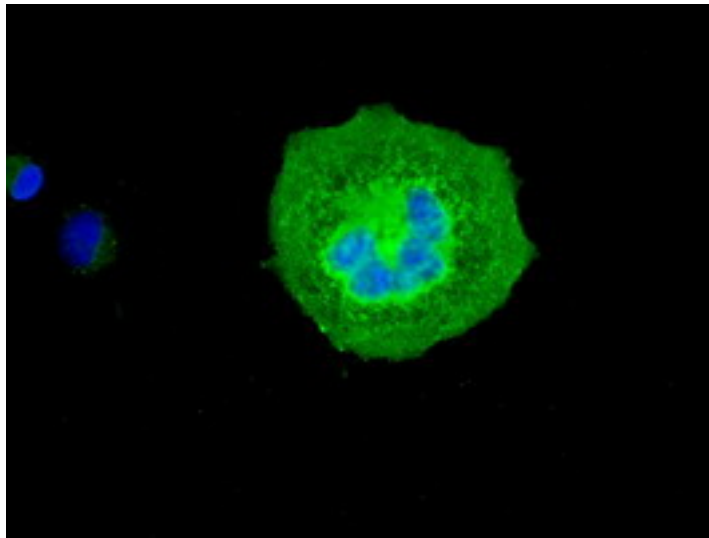


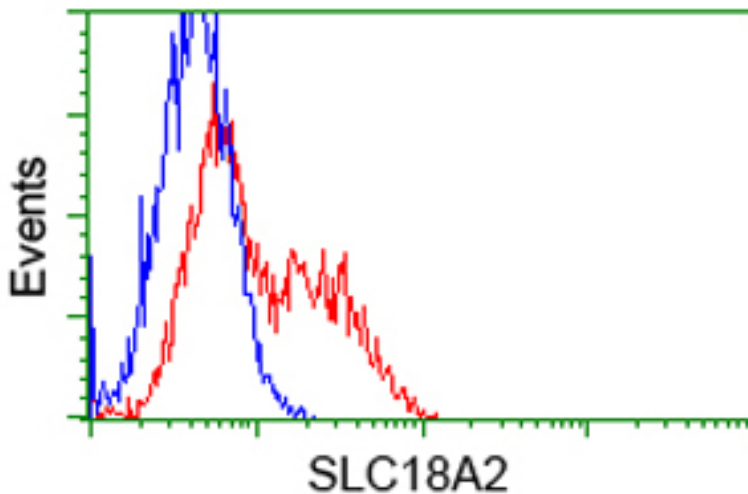
Figure from citation: Western Blot of SLC18A2 protein level by using anti-SLC18A2(9E11) antibody in the striatum of autopsied human brain. <http://www.ncbi.nlm.nih.gov/pubmed/21522164> target='_blank'>View Citation



Immunohistochemical staining of paraffin-embedded Human pancreas tissue within the normal limits using anti-SLC18A2 mouse monoclonal antibody. (Heat-induced epitope retrieval by 10mM citric buffer, pH6.0, 100C for 10min, TA500506)



Anti-SLC18A2 mouse monoclonal antibody (TA500506) immunofluorescent staining of COS7 cells transiently transfected by pCMV6-ENTRY SLC18A2(RC221342).



HEK293T cells transfected with either RC221342 overexpress plasmid(Red) or empty vector control plasmid(Blue) were immunostained by anti-SLC18A2 antibody(TA500506), and then analyzed by flow cytometry.

This product is to be used for laboratory only. Not for diagnostic or therapeutic use.

AMSBIO | www.amsbio.com | info@amsbio.com

 **UK & Rest of the World**
184 Park Drive, Milton Park
Abingdon OX14 4SE, UK
T: +44 (0)1235 828 200
F: +44 (0) 1235 820 482

 **North America**
1035 Cambridge Street,
Cambridge, MA 02141
T: +1 (617) 945-5033 or
T: +1 (800) 987-0985
F: +1 (617) 945-8218

 **Germany**
Bockenheimer Landstr. 17/19
60325 Frankfurt/Main
T: +49 (0) 69 779099
F: +49 (0) 69 13376880

 **Switzerland**
Centro Nord-Sud 2E
CH-6934 Bioggio-Lugano
T: +41(0) 91 604 55 22
F: +41(0) 91 605 17 85