

Anti-SOD1 MAB Antibody Clone OTI8B10

TA500495 SOD1 (Superoxide Dismutase 1) mouse monoclonal antibody, clone OTI8B10 (formerly 8B10)

Immunogen Full length human recombinant protein of human SOD1 (NP_000445) produced in HEK293T cell.

Clone Name Clone OTI8B10 **Isotype** IgG2b

Species Reactivity Human **Concentration** 1 mg/ml

Guaranteed Application WB, IHC, FC **Suggested Dilutions** WB 1:1000~2000, IHC 1:50, FLOW 1:100,

Predicted MW 15.8 kDa

Buffer PBS (pH 7.3) containing 1% BSA, 50% glycerol and 0.02% sodium azide.

Purification Purified from mouse ascites fluids by affinity chromatography

Target Name superoxide dismutase 1, soluble

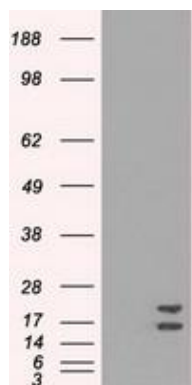
Alternative Name ALS|ALS1|HEL-S-44|IPOA|SOD|hSod1|homodimer

Database Link NP_000445

Entrez Gene 6647 Human

Function The protein encoded by this gene binds copper and zinc ions and is one of two isozymes responsible for destroying free superoxide radicals in the body. The encoded isozyme is a soluble cytoplasmic protein, acting as a homodimer to convert naturally-occurring but harmful superoxide radicals to molecular oxygen and hydrogen peroxide. The other isozyme is a mitochondrial protein. Mutations in this gene have been implicated as causes of familial amyotrophic lateral sclerosis. Rare transcript variants have been reported for this gene. [provided by RefSeq].

WB Image



HEK293T cells were transfected with the pCMV6-ENTRY control (Left lane) or pCMV6-ENTRY SOD1 (RC200725, Right lane) cDNA for 48 hrs and lysed. Equivalent amounts of cell lysates (5 ug per lane) were separated by SDS-PAGE and immunoblotted with anti-SOD1

AMSBIO | www.amsbio.com | info@amsbio.com

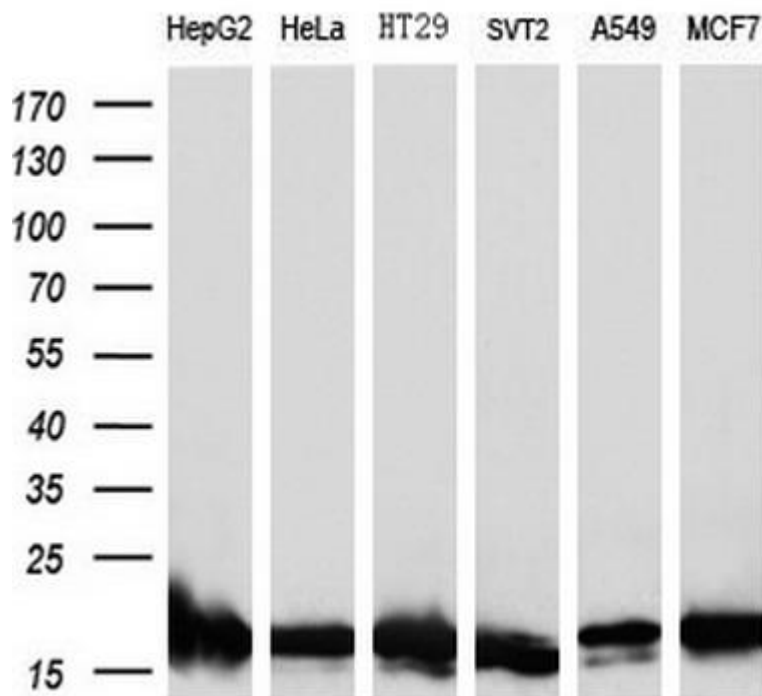
 **UK & Rest of the World**
184 Park Drive, Milton Park
Abingdon OX14 4SE, UK
T: +44 (0)1235 828 200
F: +44 (0) 1235 820 482

 **North America**
1035 Cambridge Street,
Cambridge, MA 02141
T: +1 (617) 945-5033 or
T: +1 (800) 987-0985
F: +1 (617) 945-8218

 **Germany**
Bockenheimer Landstr. 17/19
60325 Frankfurt/Main
T: +49 (0) 69 779099
F: +49 (0) 69 13376880

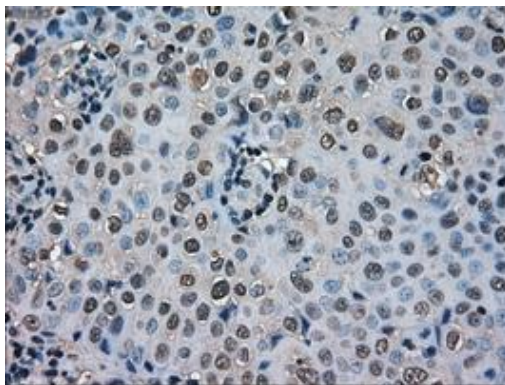
 **Switzerland**
Centro Nord-Sud 2E
CH-6934 Bioggio-Lugano
T: +41(0) 91 604 55 22
F: +41(0) 91 605 17 85

WB Image



Western blot analysis of extracts (35ug) from 6 different cell lines by using anti-SOD1 monoclonal antibody (HepG2: human; HeLa: human; HT29: human; SVT2: mouse; A549: human; MCF7: human).

IHC Image



Immunohistochemical staining of paraffin-embedded Adenocarcinoma of Human breast tissue using anti-SOD1 mouse monoclonal antibody. (Heat-induced epitope retrieval by 10mM citric buffer, pH6.0, 100C for 10min, TA500495)

AMSBIO | www.amsbio.com | info@amsbio.com

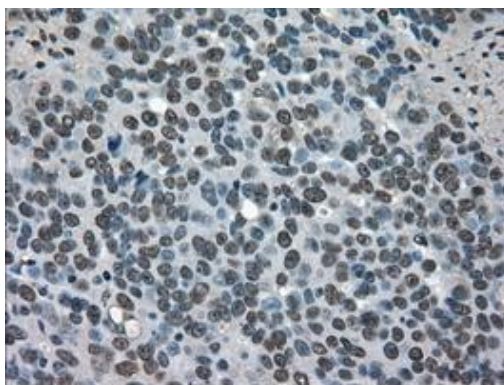
 **UK & Rest of the World**
 184 Park Drive, Milton Park
 Abingdon OX14 4SE, UK
 T: +44 (0)1235 828 200
 F: +44 (0) 1235 820 482

 **North America**
 1035 Cambridge Street,
 Cambridge, MA 02141
 T: +1 (617) 945-5033 or
 T: +1 (800) 987-0985
 F: +1 (617) 945-8218

 **Germany**
 Bockenheimer Landstr. 17/19
 60325 Frankfurt/Main
 T: +49 (0) 69 779099
 F: +49 (0) 69 13376880

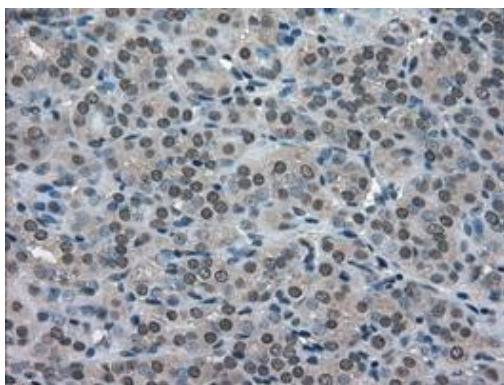
 **Switzerland**
 Centro Nord-Sud 2E
 CH-6934 Bioggio-Lugano
 T: +41(0) 91 604 55 22
 F: +41(0) 91 605 17 85

IHC Image



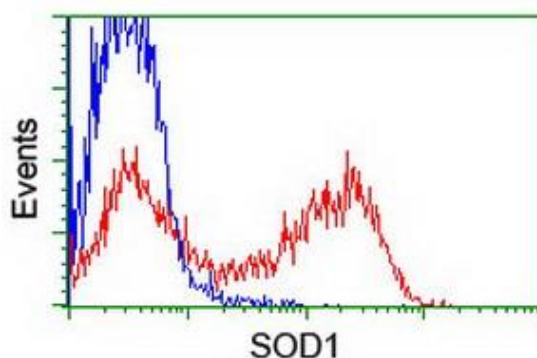
Immunohistochemical staining of paraffin-embedded Adenocarcinoma of Human ovary tissue using anti-SOD1 mouse monoclonal antibody. (Heat-induced epitope retrieval by 10mM citric buffer, pH6.0, 100C for 10min, TA500495)

IHC Image



Immunohistochemical staining of paraffin-embedded Carcinoma of Human thyroid tissue using anti-SOD1 mouse monoclonal antibody. (Heat-induced epitope retrieval by 10mM citric buffer, pH6.0, 100C for 10min, TA500495)

FC Image



HEK293T cells transfected with either RC200725 overexpress plasmid(Red) or empty vector control plasmid(Blue) were immunostained by anti-SOD1 antibody(TA500495), and then analyzed by flow cytometry.

AMSBIO | www.amsbio.com | info@amsbio.com

 **UK & Rest of the World**
184 Park Drive, Milton Park
Abingdon OX14 4SE, UK
T: +44 (0)1235 828 200
F: +44 (0) 1235 820 482

 **North America**
1035 Cambridge Street,
Cambridge, MA 02141
T: +1 (617) 945-5033 or
T: +1 (800) 987-0985
F: +1 (617) 945-8218

 **Germany**
Bockenheimer Landstr. 17/19
60325 Frankfurt/Main
T: +49 (0) 69 779099
F: +49 (0) 69 13376880

 **Switzerland**
Centro Nord-Sud 2E
CH-6934 Bioggio-Lugano
T: +41(0) 91 604 55 22
F: +41(0) 91 605 17 85