

**Name: Rabbit Polyclonal Anti-CCR8 Antibody (N-Terminus)**  
**Product Data Sheet - ANTIBODY**

**Catalog: TA340919**


<b>Components:</b>	• Rabbit Polyclonal Anti-CCR8 Antibody (N-Terminus) (TA340919)
<b>Amount:</b>	50µg
<b>Immunogen:</b>	CCR8 antibody was raised against synthetic 18 amino acid peptide from N-terminal extracellular domain of human CCR8. Percent identity with other species by BLAST analysis: Human, Gorilla (100%); Gibbon, Marmoset, Elephant, Panda (83%).
<b>Host:</b>	Rabbit
<b>Isotype:</b>	
<b>Species Reactivity:</b>	Tested: Human
<b>Guaranteed Applications:</b>	IHC
<b>Suggested Dilutions:</b>	IHC-P (28 µg/ml)
<b>Concentration:</b>	1 mg/ml
<b>Buffer:</b>	PBS, 0.1% sodium azide.
<b>Purification:</b>	Immunoaffinity purified
<b>Storage Condition:</b>	Shipped at -20C or with ice packs. Upon delivery store at -20C. Dilute in PBS (pH7.3) if necessary. Stable for 12 months from date of receipt. Avoid repeated freeze-thaws.

## Target

<b>Target Name:</b>	Homo sapiens chemokine (C-C motif) receptor 8 (CCR8)
<b>Alternative Name:</b>	CC-CKR-8; CCR-8; CDw198; CKRL1; CMKBR8; CMKBRL2; CY6; GPRCY6; TER1
<b>Database Link:</b>	<a href="#">NP_005192</a> <a href="#">Entrez Gene 1237 Human</a> <a href="#">Entrez Gene 0 Mouse</a> <a href="#">Entrez Gene 0 Rat</a> <a href="#">Entrez Gene 0 Monkey</a> <a href="#">Entrez Gene 0 Dog</a>

## Function:

AMSBIO | [www.amsbio.com](http://www.amsbio.com) | [info@amsbio.com](mailto:info@amsbio.com)

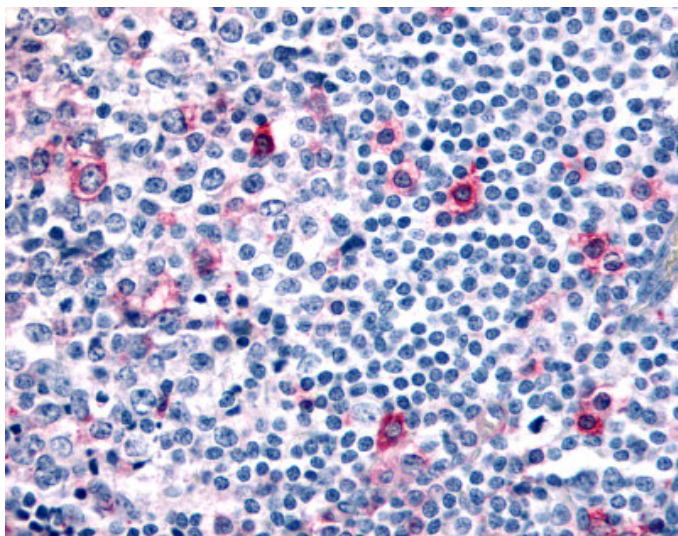
 **UK & Rest of the World**  
 184 Park Drive, Milton Park  
 Abingdon OX14 4SE, UK  
 T: +44 (0)1235 828 200  
 F: +44 (0) 1235 820 482

 **North America**  
 1035 Cambridge Street,  
 Cambridge, MA 02141  
 T: +1 (617) 945-5033 or  
 T: +1 (800) 987-0985  
 F: +1 (617) 945-8218

 **Germany**  
 Bockenheimer Landstr. 17/19  
 60325 Frankfurt/Main  
 T: +49 (0) 69 779099  
 F: +49 (0) 69 13376880

 **Switzerland**  
 Centro Nord-Sud 2E  
 CH-6934 Bioggio-Lugano  
 T: +41(0) 91 604 55 22  
 F: +41(0) 91 605 17 85

## Validation Data



Anti-CCR8 antibody IHC of human tonsil, germinal center and mantle zone. Immunohistochemistry of formalin-fixed, paraffin-embedded tissue after heat-induced antigen retrieval.

AMSBIO | [www.amsbio.com](http://www.amsbio.com) | [info@amsbio.com](mailto:info@amsbio.com)

 **UK & Rest of the World**  
184 Park Drive, Milton Park  
Abingdon OX14 4SE, UK  
T: +44 (0)1235 828 200  
F: +44 (0) 1235 820 482

 **North America**  
1035 Cambridge Street,  
Cambridge, MA 02141  
T: +1 (617) 945-5033 or  
T: +1 (800) 987-0985  
F: +1 (617) 945-8218

 **Germany**  
Bockenheimer Landstr. 17/19  
60325 Frankfurt/Main  
T: +49 (0) 69 779099  
F: +49 (0) 69 13376880

 **Switzerland**  
Centro Nord-Sud 2E  
CH-6934 Bioggio-Lugano  
T: +41(0) 91 604 55 22  
F: +41(0) 91 605 17 85