

Name: Rabbit Polyclonal Anti-SERPINA6 Antibody
Product Data Sheet - ANTIBODY

Catalog: TA339985

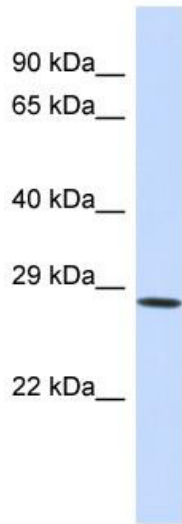
Components:	• Rabbit Polyclonal Anti-SERPINA6 Antibody (TA339985)
Amount:	50ug
Immunogen:	The immunogen for Anti-SERPINA6 antibody is: synthetic peptide directed towards the middle region of Human SERPINA6. Synthetic peptide located within the following region: QGLGFNLTERSETEIHQGFQHLHQLFAKSDTSLEMTMGNALFLDGSLELL
Host:	Rabbit
Isotype:	IgG
Species Reactivity:	Human, Rat, Mouse, Pig, Bovine, Horse, Dog, Rabbit, Guinea pig, Sheep
Guaranteed Applications:	WB
Suggested Dilutions:	WB
Concentration:	1mg/mL
Buffer:	Shipped as lyophilized powder. 1X PBS with 0.09% (w/v) sodium azide and 2% sucrose.
Purification:	Affinity Purified
Storage Condition:	Shipped at -20C or with ice packs. Upon delivery store at -20C. Dilute in PBS (pH7.3) if necessary. Stable for 12 months from date of receipt. Avoid repeated freeze-thaws.

Target

Target Name:	Homo sapiens serpin peptidase inhibitor, clade A (alpha-1 antiproteinase, antitrypsin), member 6 (SERPINA6)
Alternative Name:	CBG
Database Link:	NP_001747 Entrez Gene 866 Human Entrez Gene 12401 Mouse Entrez Gene 299270 Rat Entrez Gene 0 Monkey Entrez Gene 490838 Dog
Function:	The function of this protein remains unknown.

This product is to be used for laboratory only. Not for diagnostic or therapeutic use.

Validation Data



Host: Rabbit
Target Name: SERPINA6
Sample Tissue: Hela Cell Lysate
Antibody Dilution: 1.0µg/ml

Host: Rabbit; Target Name: SERPINA6; Sample Tissue:
Hela Whole Cell lysates; Antibody Dilution: 1.0 ug/ml

This product is to be used for laboratory only. Not for diagnostic or therapeutic use.

AMSBIO | www.amsbio.com | info@amsbio.com

 **UK & Rest of the World**
184 Park Drive, Milton Park
Abingdon, UK
T: +44 (0)1235 828 200
F: +44 (0) 1235 820 482

 **North America**
1035 Cambridge Street,
Cambridge, MA 02141
T: +1 (617) 945-5033 or
T: +1 (800) 987-0985
F: +1 (617) 945-8218

 **Germany**
Bockenheimer Landstr. 17/19
60325 Frankfurt/Main
T: +49 (0) 69 779099
F: +49 (0) 69 13376880

 **Switzerland**
Centro Nord-Sud 2E
CH-6934 Bioggio-Lugano
T: +41(0) 91 604 55 22
F: +41(0) 91 605 17 85