

Product datasheet for TA337075

TLR3 Mouse Monoclonal Antibody [Clone ID: 40C1285.6]

Product data:

Product Type:	Primary Antibodies
Clone Name:	40C1285.6
Applications:	FC, IHC, WB
Recommend Dilution:	WB: 1-3 ug/ml, FC: 2-4 ug/ 1x10 ⁶ cells, IF: 1:10-1:500, IHC: 1:10-1:500, IHC-P: 1:10-1:500, IP: 2 ug/ 1x10 ⁶ cells
Reactivity:	Canine, Human, Mouse
Host:	Mouse
Isotype:	IgG1, kappa
Clonality:	Monoclonal
Immunogen:	A synthetic peptide corresponding to amino acids 55-85 of human TLR3 was used as immunogen.
Formulation:	PBS containing 0.05% BSA, 0.05% Sodium Azide. Store at 4C short term. Aliquot and store at -20C long term. Avoid freeze-thaw cycles.
Concentration:	0.5 mg/ml
Purification:	Protein G purified
Gene Name:	toll like receptor 3
Database Link:	NP_003256 Entrez Gene 142980 Mouse Entrez Gene 7098 Human
Synonyms:	CD283; IIAE2
Protein Families:	Druggable Genome, Transmembrane
Protein Pathways:	Toll-like receptor signaling pathway

AMSBIO | www.amsbio.com | info@amsbio.com

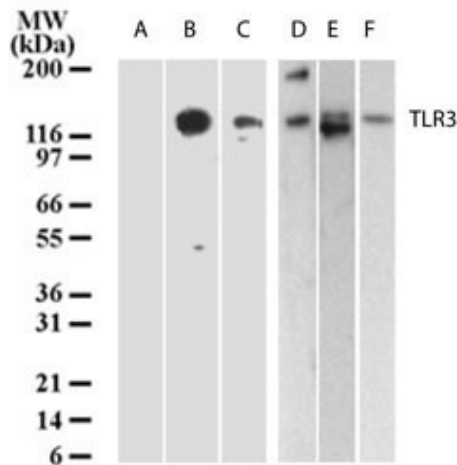
 **UK & Rest of the World**
184 Park Drive, Milton Park
Abingdon OX14 4SE, UK
T: +44 (0)1235 828 200
F: +44 (0) 1235 820 482

 **North America**
1035 Cambridge Street,
Cambridge, MA 02141
T: +1 (617) 945-5033 or
T: +1 (800) 987-0985
F: +1 (617) 945-8218

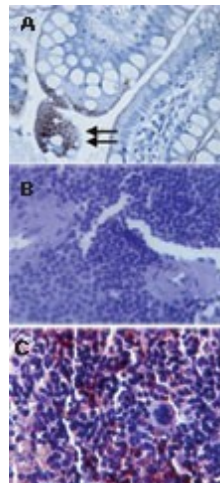
 **Germany**
Bockenheimer Landstr. 17/19
60325 Frankfurt/Main
T: +49 (0) 69 779099
F: +49 (0) 69 13376880

 **Switzerland**
Centro Nord-Sud 2E
CH-6934 Bioggio-Lugano
T: +41(0) 91 604 55 22
F: +41(0) 91 605 17 85

Product images:



Western Blot: TLR3 Antibody (40C1285.6) TA337075 - analysis of TLR3 in lysates from A) untransfected 293, B) 293 cells transfected with human TLR3 cDNA, C) human intestine, D) placenta, E) heart and F) ovary using TLR3 antibody at 3 ug/ml. Goat anti-mou



Immunohistochemistry-Paraffin: TLR3 Antibody (40C1285.6) TA337075 - Analysis of TLR3 in (A) human gut lumen (longitudinal section, transverse region) using this antibody at 10 ug/ml (Data courtesy Dr. Elizabeth Furrie, University of Dundee) and mouse sp

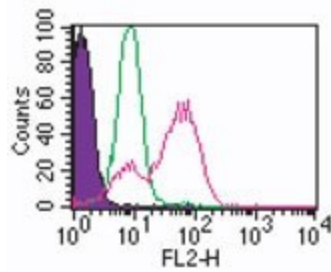
AMSBIO | www.amsbio.com | info@amsbio.com

 **UK & Rest of the World**
184 Park Drive, Milton Park
Abingdon OX14 4SE, UK
T: +44 (0)1235 828 200
F: +44 (0) 1235 820 482

 **North America**
1035 Cambridge Street,
Cambridge, MA 02141
T: +1 (617) 945-5033 or
T: +1 (800) 987-0985
F: +1 (617) 945-8218

 **Germany**
Bockenheimer Landstr. 17/19
60325 Frankfurt/Main
T: +49 (0) 69 779099
F: +49 (0) 69 13376880

 **Switzerland**
Centro Nord-Sud 2E
CH-6934 Bioggio-Lugano
T: +41(0) 91 604 55 22
F: +41(0) 91 605 17 85



Flow Cytometry: TLR3 Antibody (40C1285.6)
TA337075 - Intracellular flow analysis of TLR3 in human monocytes using 0.5 ug of the antibody. Shaded histogram represents monocytes without antibody; green represents isotype control (Novus, 20109); red repres

AMSBIO | www.amsbio.com | info@amsbio.com

 **UK & Rest of the World**
184 Park Drive, Milton Park
Abingdon OX14 4SE, UK
T: +44 (0)1235 828 200
F: +44 (0) 1235 820 482

 **North America**
1035 Cambridge Street,
Cambridge, MA 02141
T: +1 (617) 945-5033 or
T: +1 (800) 987-0985
F: +1 (617) 945-8218

 **Germany**
Bockenheimer Landstr. 17/19
60325 Frankfurt/Main
T: +49 (0) 69 779099
F: +49 (0) 69 13376880

 **Switzerland**
Centro Nord-Sud 2E
CH-6934 Bioggio-Lugano
T: +41(0) 91 604 55 22
F: +41(0) 91 605 17 85