

Name: Rabbit Polyclonal DNA Polymerase beta Antibody
Product Data Sheet - ANTIBODY

Catalog: TA326011

Components:	• Rabbit Polyclonal DNA Polymerase beta Antibody (TA326011)
Amount:	100ul
Immunogen:	The antiserum was produced against a synthesized A synthesized peptide derived from human DNA Polymerase beta.
Host:	Rabbit
Isotype:	IgG
Species Reactivity:	Human, Mouse, Rat
Guaranteed Applications:	WB, IHC
Suggested Dilutions:	WB: 1:500-1:2000; IHC: 1:50-1:200
Concentration:	1mg/ml
Buffer:	Rabbit IgG in phosphate buffered saline , pH 7.4, 150mM NaCl, 0.02% sodium azide and 50% glycerol.
Purification:	The antibody was affinity-purified from rabbit antiserum by affinity-chromatography using epitope-specific peptide.
Storage Condition:	Shipped at -20C or with ice packs. Upon delivery store at -20C. Dilute in PBS (pH7.3) if necessary. Stable for 12 months from date of receipt. Avoid repeated freeze-thaws.

Target

Target Name:	Homo sapiens polymerase (DNA directed), beta (POLB)
Alternative Name:	MGC125976
Database Link:	NP_002681 Entrez Gene 5423 Human Entrez Gene 18970 Mouse Entrez Gene 29240 Rat
Function:	POLB Repair polymerase. Conducts gap-filling DNA synthesis in a stepwise distributive fashion rather than in a processive fashion as for other DNA polymerases. Has a 5'-deoxyribose-5- phosphate lyase (dRP lyase) activity. Belongs to the DNA polymerase type-X family. Monomer.

This product is to be used for laboratory only. Not for diagnostic or therapeutic use.

AMSBIO | www.amsbio.com | info@amsbio.com



UK & Rest of the World
 184 Park Drive, Milton Park
 Abingdon OX14 4SE, UK
 T: +44 (0)1235 828 200
 F: +44 (0) 1235 820 482



North America
 1035 Cambridge Street,
 Cambridge, MA 02141
 T: +1 (617) 945-5033 or
 T: +1 (800) 987-0985
 F: +1 (617) 945-8218

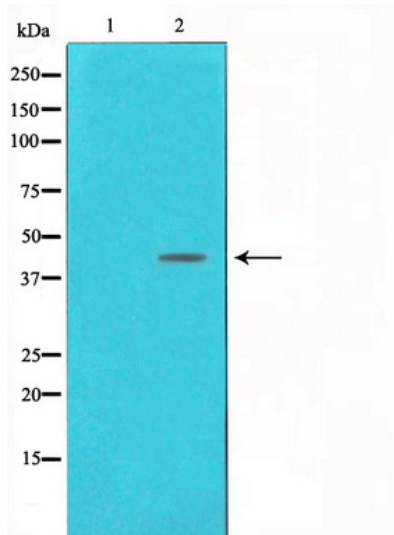


Germany
 Bockenheimer Landstr. 17/19
 60325 Frankfurt/Main
 T: +49 (0) 69 779099
 F: +49 (0) 69 13376880

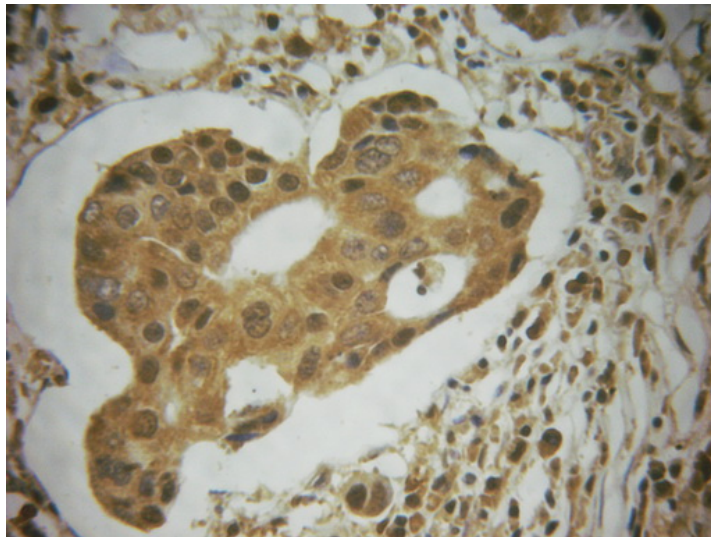


Switzerland
 Centro Nord-Sud 2E
 CH-6934 Bioggio-Lugano
 T: +41(0) 91 604 55 22
 F: +41(0) 91 605 17 85

Validation Data



Western blot analysis on NIH-3T3 cell lysate using DNA Polymerase beta Antibody



Immunohistochemical analysis of paraffin-embedded breast carcinoma tissue using DNA Polymerase ? Antibody.

This product is to be used for laboratory only. Not for diagnostic or therapeutic use.

AMSBIO | www.amsbio.com | info@amsbio.com

 **UK & Rest of the World**
184 Park Drive, Milton Park
Abingdon OX14 4SE, UK
T: +44 (0)1235 828 200
F: +44 (0) 1235 820 482

 **North America**
1035 Cambridge Street,
Cambridge, MA 02141
T: +1 (617) 945-5033 or
T: +1 (800) 987-0985
F: +1 (617) 945-8218

 **Germany**
Bockenheimer Landstr. 17/19
60325 Frankfurt/Main
T: +49 (0) 69 779099
F: +49 (0) 69 13376880

 **Switzerland**
Centro Nord-Sud 2E
CH-6934 Bioggio-Lugano
T: +41(0) 91 604 55 22
F: +41(0) 91 605 17 85