

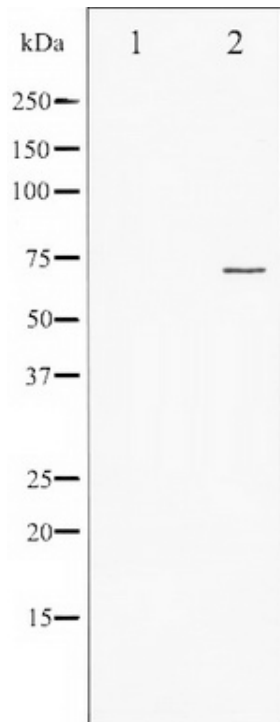
Name: Rabbit Polyclonal FOXO1A Antibody
Product Data Sheet - ANTIBODY
Catalog: TA325473

Components:	<ul style="list-style-type: none"> • Rabbit Polyclonal FOXO1A Antibody (TA325473) • 1 vial of 20ug myc-DDK tagged FOXO1 HEK293T over-expression lysate lyophilized in RIPA buffer (LC419586). (Reconstitute into 20ul of 1x SDS sample buffer before loading; load 5ul per lane as WB control or as desired)
Amount:	100ul
Immunogen:	The antiserum was produced against A synthesized peptide derived from human FOXO1A
Host:	Rabbit
Isotype:	IgG
Species Reactivity:	Human, Mouse, Rat
Guaranteed Applications:	WB
Suggested Dilutions:	WB: 1:500-1:2000; IHC: 1:50-1:200; IF/ICC: 1:100-1:500
Concentration:	1
Buffer:	Rabbit IgG in phosphate buffered saline , pH 7.4, 150mM NaCl, 0.02% sodium azide and 50% glycerol.
Purification:	The antibody was affinity-purified from rabbit antiserum by affinity-chromatography using epitope-specific peptide.
Storage Condition:	Shipped at -20C. Upon delivery store at -20C. Dilute in PBS (pH7.3) if necessary. Stable for 12 months from date of receipt. Avoid repeated freeze-thaws.

Target

Target Name:	Homo sapiens forkhead box O1 (FOXO1)
Alternative Name:	FKH1; FKHR; FOXO1A
Database Link:	NP_002006 Entrez Gene 2308 Human Entrez Gene 56458 Mouse Entrez Gene 84482 Rat
Function:	This gene belongs to the forkhead family of transcription factors which are characterized by a distinct forkhead domain. The specific function of this gene has not yet been determined; however, it may play a role in myogenic growth and differentiation.

Validation Data



Western blot analysis of FOXO1A expression in Serum treated HeLa whole cell lysates. The lane on the left is treated with the antigen-specific peptide.

This product is to be used for laboratory only. Not for diagnostic or therapeutic use.



AMSBIO | www.amsbio.com | info@amsbio.com

 **UK & Rest of the World**
184 Park Drive, Milton Park
Abingdon, UK
T: +44 (0)1235 828 200
F: +44 (0) 1235 820 482

 **North America**
1035 Cambridge Street,
Cambridge, MA 02141
T: +1 (617) 945-5033 or
T: +1 (800) 987-0985
F: +1 (617) 945-8218

 **Germany**
Bockenheimer Landstr. 17/19
60325 Frankfurt/Main
T: +49 (0) 69 779099
F: +49 (0) 69 13376880

 **Switzerland**
Centro Nord-Sud 2E
CH-6934 Bioggio-Lugano
T: +41(0) 91 604 55 22
F: +41(0) 91 605 17 85