

Name: Anti-NOTCH3 Rabbit Polyclonal Antibody
Product Data Sheet - ANTIBODY

Catalog: TA323658

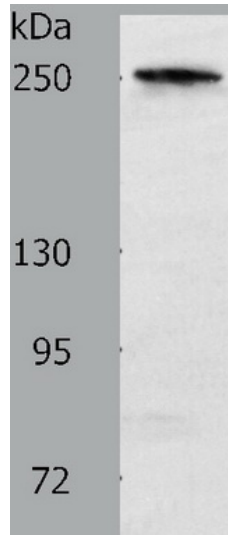
Components:	• Anti-NOTCH3 Rabbit Polyclonal Antibody (TA323658)
Amount:	100ul
Immunogen:	Synthetic peptide corresponding to a region derived from 2307-2321 amino acids of Human notch 3
Host:	Rabbit
Isotype:	IgG
Species Reactivity:	Human, Mouse, Rat
Guaranteed Applications:	WB, IHC
Suggested Dilutions:	ELISA: 1:1000-5000, WB: 1:200-1000, IHC: 1:25-100
Concentration:	0.8mg/ml
Buffer:	PBS pH7.3, 0.05% NaN ₃ , 50% glycerol
Purification:	Antigen affinity purification
Storage Condition:	Shipped at -20C or with ice packs. Upon delivery store at -20C. Dilute in PBS (pH7.3) if necessary. Stable for 12 months from date of receipt. Avoid repeated freeze-thaws.

Target

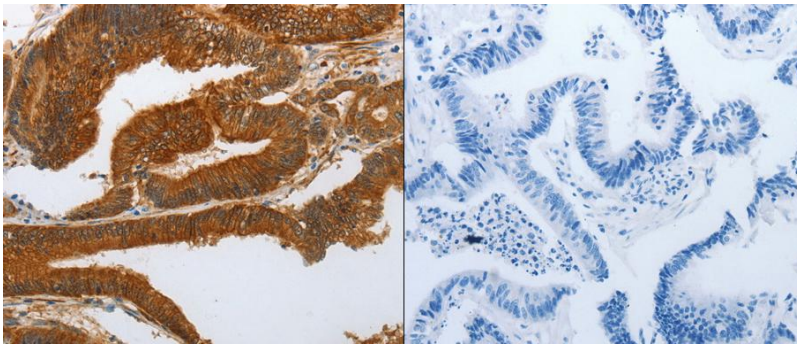
Target Name:	Homo sapiens notch 3 (NOTCH3)
Alternative Name:	CADASIL; CADASIL1; CASIL; IMF2; LMNS
Database Link:	NP_000426 Entrez Gene 4854 Human Entrez Gene 18131 Mouse Entrez Gene 56761 Rat
Function:	This gene encodes the third discovered human homologue of the Drosophila melanogaster type I membrane protein notch. In Drosophila; notch interaction with its cell-bound ligands (delta; serrate) establishes an intercellular signalling pathway that plays a key role in neural development. Homologues of the notch-ligands have also been identified in human; but precise interactions between these ligands and the human notch homologues remains to be determined. Mutations in NOTCH3 have been identified as the underlying cause of cerebral autosomal dominant arteriopathy with subcortical infarcts and leukoencephalopathy (CADASIL).

This product is to be used for laboratory only. Not for diagnostic or therapeutic use.

Validation Data



Predicted band size: 244 kDa . Positive control: Human colon cancer tissue lysate. Recommended dilution: 1/200-1000. (Gel: 8%SDS-PAGE Lysate: 40 ug per lane Primary antibody: 1/400 dilution Secondary antibody: Goat anti Rabbit IgG - H&L (HRP) at 1/10000 dilution Exposure time: 1 minute)



Predicted cell location: Cytoplasm, Cell membrane.
Positive control: Human colon cancer tissue.
Recommended dilution: 1/25-100 The image on the left is immunohistochemistry of paraffin-embedded human colon cancer tissue using NOTCH3 antibody at dilution 1/25, on the right is treated with the synthetic peptide. (Original magnification:x200)

This product is to be used for laboratory only. Not for diagnostic or therapeutic use.

AMSBIO | www.amsbio.com | info@amsbio.com

 **UK & Rest of the World**
184 Park Drive, Milton Park
Abingdon, UK
T: +44 (0)1235 828 200
F: +44 (0) 1235 820 482

 **North America**
1035 Cambridge Street,
Cambridge, MA 02141
T: +1 (617) 945-5033 or
T: +1 (800) 987-0985
F: +1 (617) 945-8218

 **Germany**
Bockenheimer Landstr. 17/19
60325 Frankfurt/Main
T: +49 (0) 69 779099
F: +49 (0) 69 13376880

 **Switzerland**
Centro Nord-Sud 2E
CH-6934 Bioggio-Lugano
T: +41(0) 91 604 55 22
F: +41(0) 91 605 17 85