

**Name:** Rabbit monoclonal antibody against Actin (Pan)(EP184E)

**Catalog:** TA303378

## Product Data Sheet

**Gene Name:** Homo sapiens actin, alpha, cardiac muscle 1 (ACTC1)

**GeneBank accession:** NM\_005159

**Isotype:** Rabbit IgG

**Clone Name:** EP184E

**Gene Synonym:** ACTC; ASD5; CMD1R; CMH11; LVNC4

**Validation Data:**

**Reactivity:** Human, Mouse, Rat

**Western Blot**

**Immunogen:** A synthetic peptide corresponding to residues near the N-terminus of human Actin was used as an immunogen. This Actin antibody recognizes all muscle actin.

### Components:

- 100 µl Rabbit monoclonal antibody against Actin (Pan)(EP184E) (TA303378)
- 1 vial of 20µg myc-DDK tagged ACTC1 HEK293T over-expression lysate lyophilized in RIPA buffer (LY417479) (Reconstitute into 20 µl of 1x SDS sample buffer before loading)

### Recommended application dilutions:

WB: 1:1,000 IHC: 1:100 200 ICC: 1:250 500 Flow Cytometry: 1:20 IP: 1:20

### Storage Condition:

Shipped at 4C. Upon delivery store at -20C. Dilute in PBS (pH7.3) before use. Stable for 12 months from date of receipt. Avoid repeated freeze-thaws.

### Buffer:

50 mM Tris-Glycine (pH 7.4), 0.15 M NaCl, 40% Glycerol, 0.01% sodium azide and 0.05% BSA.

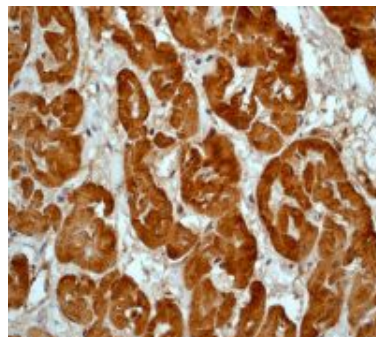
### Background:

Actins are highly conserved proteins that are involved in various types of cell motility. Polymerization of globular actin (G-actin) leads to a structural filament (F-actin) in the form of a two-stranded helix. Each actin can bind to four others. The protein encoded by this gene belongs to the actin family which is comprised of three main groups of actin isoforms, alpha, beta, and gamma. The alpha actins are found in muscle tissues and are a major constituent of the contractile apparatus. Defects in this gene have been associated with idiopathic dilated cardiomyopathy (IDC) and familial hypertrophic cardiomyopathy (FHC). [provided by RefSeq].



Western blot analysis on A431 cell lysate using anti-Actin RabMAb (TA303378), dilution 1:1,000

### IHC data



Immunohistochemical staining of paraffin-embedded human cardiac muscle using anti-Actin RabMAb (TA303378).

### Related Product:

TrueORF cDNA clones  
 VERIFY Tagged Antigen lysates  
 HuSH-29 shRNA  
 Western Blot reagents  
 Anti-myc/DDK tag antibodies

\* Peptide sequence of the DDK-tag (Flag®): N-DYKDDDDK-C Flag® is a registered trademark of Sigma-Aldrich

***This product is to be used for laboratory only. Not for diagnostic or therapeutic use.***