

RapidSeq™ High Yield Directional mRNA Sample Prep Kit

User's Manual and Instructions

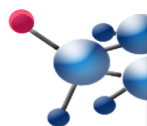
Catalog Number:

- **KS073012**
- **KS073012-I**
- **KS073012-II**
- **KS073012-III**
- **KS073012-IV**

Introduction

Analysis of differential RNA expression helps us to understand biological pathways and molecular mechanisms which are involved in the regulation of cell function, individual development, and disease progression. Sequencing technologies provide a powerful tool for transcriptome analysis. Next-generation sequencing (NGS) has great advantages over conventional methods by tremendously reducing the sequencing costs and increasing genome coverage. Transcriptome sequencing or RNA-seq is a novel method for gene expression analysis. Advantages of RNA-Seq include no bias toward known RNA molecules as with probe-based technologies, ability to detect novel and rare transcripts or novel alternative splice isoforms, and direct measurement of transcript abundance within biological samples.

The RapidSeq™ kit aims to prepare directional NGS libraries for subsequent cluster generation, using purified mRNA as start material. The protocol includes steps for mRNA fragmentation, purification, adapter ligation, reverse transcription, PCR amplification, and DNA fragment enrichment to generate strand specific library product compatible with illumina NGS platform (Figure 1).



UK & Rest of World

184 Milton Park, Abingdon
OX14 4SE, Oxon, UK
Tel: +44 (0) 1235 828 200
Fax: +44 (0) 1235 820 482

Switzerland

Centro Nord-Sud 2E
CH-6934 Bioggio-Lugano
Tel: +41 (0) 91 604 55 22
Fax: +41 (0) 91 605 17 85

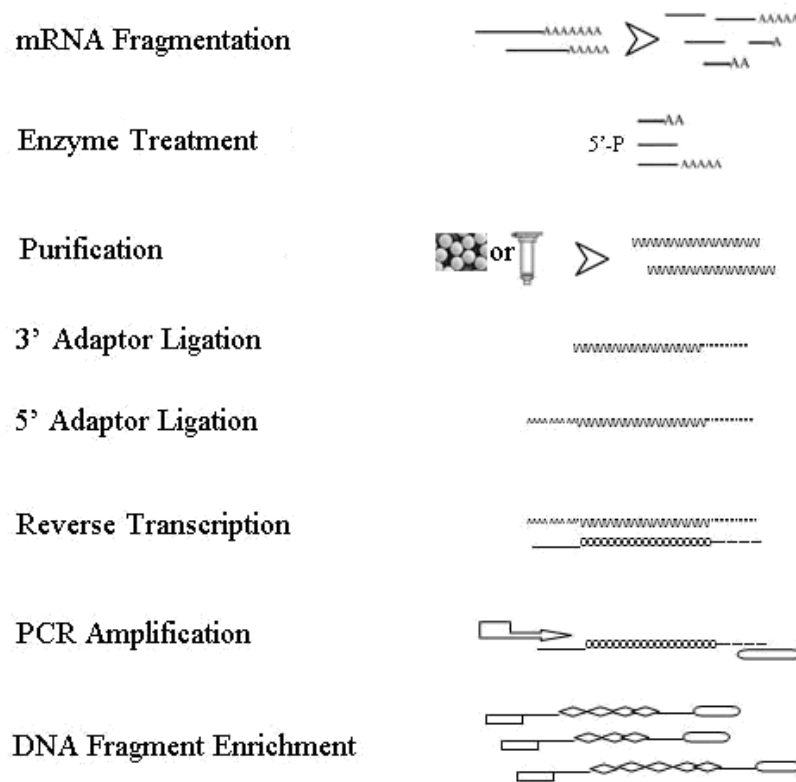
Deutschland

Bockenheimer Landstr. 17/19
60325 Frankfurt/Main
Tel: +49 (0) 69 779099
Fax: +49 (0) 69 13376880

North America

23591 El Toro Rd, Suite #180
Lake Forest, CA 92630
Tel: + 1 800 987 0985
Fax: + 1 949 265 7703

Figure 1. Workflow Chart of Directional mRNA NGS Library Construction



Features

- Simple workflow - most components are supplied as ready-to-use master mixtures which reduces setup time and liquid handling steps.
- Leading level of directionality.
- Wide dynamic range - purified mRNA could be down to 50 ng.
- Automation capable protocol.

Applications

- Expression of all coding RNAs.
- Identification of alternative splicing events.
- Detection of single nucleotide polymorphisms or mutations.
- Discretion of translocations and fusion transcripts.
- Discovery of allele specific expression patterns.

Description

Components in this kit are prepared with pure chemicals to construct NGS libraries compatible with Illumina's sequencing platform for subsequent cluster generation, using purified mRNA as input. Four sets of the kit with different 4 sets of 12 aligners are available, respectively.

Quality Control

At least one kit of each lot has been tested for directional mRNA NGS library construction using mRNA isolated from Adult Normal Lung Tissue (Cat# M1234152) and Illumina's NGS instrument. Good distributions are observed.

Components

One kit with aligner has 3 boxes listed in below; only one aligner box is included in one kit. (see table 1-3 below). Reagents are sufficient for 12 assays. The kit without aligner only includes 2 boxes.

Table 1. Contents List of RapidSeq High Yield Directional mRNA Sample Prep Kit (Box 1 of 3, Store at -20°C)

Cap Color	Item	Amount in kit	Part No.
Nature	Fragmentation Buffer	30 µl	KS073012-1
Amber	Fragmentation Enzyme Mix	70 µl	KS073012-2
Orange	DNA Storage Solution	160 µl	LB3401010

Table 2. Contents List of RapidSeq High Yield Directional mRNA Sample Prep Kit (Box 2 of 3, Store at -20°C)

Cap Color	Item	Amount in kit	Part No.
Green	Tail Oligo	30 µl	KS073012-3
	Tail Buffer	30 µl	KS073012-4
	Tail Enzyme	30 µl	KS073012-5
	Ligation Enhancer	27 µl	KS073012-6
Red	Cap Oligo	30 µl	KS073012-7
	Cap Enzyme	30 µl	KS073012-8
Yellow	RT Oligo	60 µl	KS073012-9
	RT Enzyme	60 µl	KS073012-10
Blue	Universal Primer	60 µl	KS073012-11
	PCR MasterMix	700 µl	KS073012-12

Table 3. Contents List of RapidSeq High Yield Directional mRNA Sample Prep Kit
(Box 3 of 3, Store at -20°C)**KS072012-I**

Item	Amount in kit (μl)	Part No.	Sequence
Aligner 1	10	KS072012-1	ATCACG
Aligner 2	10	KS072012-2	CGATGT
Aligner 3	10	KS072012-3	TTAGGC
Aligner 4	10	KS072012-4	TGACCA
Aligner 5	10	KS072012-5	ACAGTG
Aligner 6	10	KS072012-6	GCCAAT
Aligner 7	10	KS072012-7	CAGATC
Aligner 8	10	KS072012-8	ACTTGA
Aligner 9	10	KS072012-9	GATCAG
Aligner 10	10	KS072012-10	TAGCTT
Aligner 11	10	KS072012-11	GGCTAC
Aligner 12	10	KS072012-12	CTTGTA

KS071012-II

Item	Amount in kit (μl)	Part No.	Sequence
Aligner 13	10	KS072012-13	AGTCAA
Aligner 14	10	KS072012-14	AGTTCC
Aligner 15	10	KS072012-15	ATGTCA
Aligner 16	10	KS072012-16	CCGTCC
Aligner 17	10	KS072012-17	GTAGAG
Aligner 18	10	KS072012-18	GTCCGC
Aligner 19	10	KS072012-19	GTGAAA
Aligner 20	10	KS072012-20	GTGGCC
Aligner 21	10	KS072012-21	GTTTCG
Aligner 22	10	KS072012-22	CGTACG
Aligner 23	10	KS072012-23	GAGTGG
Aligner 24	10	KS072012-24	GGTAGC

KS072012-III

Item	Amount in kit (µl)	Part No.	Sequence
Aligner 25	10	KS072012-25	ACTGAT
Aligner 26	10	KS072012-26	ATGAGC
Aligner 27	10	KS072012-27	ATTCCT
Aligner 28	10	KS072012-28	CAAAAG
Aligner 29	10	KS072012-29	CAACTA
Aligner 30	10	KS072012-30	CACCGG
Aligner 31	10	KS072012-31	CACGAT
Aligner 32	10	KS072012-32	CACTCA
Aligner 33	10	KS072012-33	CAGGCG
Aligner 34	10	KS072012-34	CATGGC
Aligner 35	10	KS072012-35	CATTTT
Aligner 36	10	KS072012-36	CCAACA

KS072012-IV

Item	Amount in kit (µl)	Part No.	Sequence
Aligner 37	10	KS072012-37	CGGAAT
Aligner 38	10	KS072012-38	CTAGCT
Aligner 39	10	KS072012-39	CTATAC
Aligner 40	10	KS072012-40	CTCAGA
Aligner 41	10	KS072012-41	GACGAC
Aligner 42	10	KS072012-42	TAATCG
Aligner 43	10	KS072012-43	TACAGC
Aligner 44	10	KS072012-44	TATAAT
Aligner 45	10	KS072012-45	TCATTC
Aligner 46	10	KS072012-46	TCCCGA
Aligner 47	10	KS072012-47	TCGAAG
Aligner 48	10	KS072012-48	TCGGCA

Storage and Stability

Upon receipt, store all reagents appropriately. Avoid repeated freeze/thaw cycles. The shelf life is 6 months for the kit.

Protocol

Consumables Preparation

The kit has all key reagents to run experiment except the common consumables and instruments. Please make sure all materials are available before starting this protocol (Table 4).

Table 4. List of Consumables and Equipments

Consumables and Equipments	Supplier
0.2 ml, 1.5 ml, and 2 ml clean, nuclease-free microcentrifuge tubes	General lab supplier
200 µl, clean, nuclease-free PCR tubes	General lab supplier
Nuclease-free Water	General lab supplier
Ethanol	General lab supplier
100 mM EDTA	General lab supplier
RNA clean kit	General lab supplier
DNA clean kit	Amsbio
Magnetic stand	Amsbio
NanoDrop	Thermo Scientific
Thermal cycler	General lab supplier
Vortexer	General lab supplier
Benchtop microcentrifuge	General lab supplier
2100 Bioanalyzer	Agilent
DNA 1000 chip	Agilent, 5067-1504
High Sensitivity DNA chip (optional)	Agilent, 5067-4626

Cautions

1. This product is for **Research Use Only**.
2. Close adherence to the protocol will assure optimal performance and reproducibility.
3. Set up reactions in sterile, nuclease - free tubes on ice.
4. Prepare 10% extra mixture when running multiple samples.
5. Care should be taken to ensure nuclease - free processing.
6. Due to the analytical sensitivity of this test, extreme care should be taken to avoid the contamination of reagents.
7. The assay kit should be used as a system. Do not substitute other manufacturer's reagents. Dilution, reducing reaction volumes, or other deviation in this protocol may affect the performance of this testing kit.
8. Do not mix or combine reagents from kits with different lot numbers.
9. Materials are stable until the labeled expiration date when stored and handled as directed. Do not use kits beyond their expiration date.

RNA Input

1. This protocol has been optimized using purified 100 ng mRNA as input from Adult Normal Lung Tissue Total RNA (Cat# R1234152-50) processed by MagSeq mRNA Purification Kit (Cat# K2012008).
2. For positive control, AMSBio recommends using MagSeq mRNA Purification Kit (Cat# K2012008) to purify Adult Normal Lung Tissue Total RNA (Cat# R1234152-50).
3. Messenger RNA populations can vary significantly between different tissue types and species. Use of mRNA from other species, tissues and purification kits may require further optimization.

mRNA Fragmentation

Pre-heat the thermal cycler to 94°C.

1. Prepare mRNA sample (50~100 ng) in a sterile, nuclease-free 200 µl PCR tube as total volume at **16** µl.
2. Add **2** µl Fragmentation Buffer, gently pipette the entire volume up and down 6–8 times to mix thoroughly, then centrifuge briefly.
3. Incubate the tube at 94°C for 5 minutes and then immediately place the tube on ice.
4. Immediately add **2** µl 100 mM EDTA to the tube.

Fragmentation Enzyme Treatment

1. Add **5** µl Fragmentation Enzyme Mix to the fragmentation reaction tube. Gently pipette the entire volume up and down 6–8 times to mix thoroughly, then centrifuge briefly.
2. Incubate the tube at 37°C for 60 minutes and then place the tube on ice.

Treated mRNA Purification

Recommend use Zymo RNA Clean & Concentrator-5 or Qiagen RNeasy MinElute Cleanup kit according manufacturer's instruction. Use 10 µl nuclease-free water for elution.

Pooling

Each RapidSeq™ High Yield Directional mRNA Sample Prep Kit can be used to construct libraries that are compatible with illumina multiplexing. While processing samples in parallel, incorporate the index at the amplification step following reverse transcription. Samples could be pooled immediately prior to DNA fragment enrichment or make pools of samples after that.

Library Preparation

Pre-heat the thermal cycler to 70°C and pre-heat another thermal cycler to 28°C if available.

1. Prepare purified Fragmentation Enzyme treated mRNA sample for total volume at **5** µl (use Nuclease-free Water as dilution if necessary) in a sterile, nuclease-free 200 µl PCR tube on ice.
2. Add **2** µl Tail Oligo into RNA tube. Gently pipette the entire volume up and down 6–8 times to mix thoroughly, then centrifuge briefly.
3. Incubate the tube at 70°C for 2 minutes and then immediately place the tube on ice.
4. Transfer **2** µl Tail Buffer to a sterile, nuclease-free 200 µl PCR tube on ice.
5. Add **2** µl Tail Enzyme to the Buffer tube. Gently pipette the entire volume up and down 6–8 times to mix thoroughly.
6. Transfer these **4** µl mixture to RNA tube from Step 3. Gently pipette the entire volume up and down 6–8 times to mix thoroughly. Incubate the tube at 28°C for 1 hour.

7. Directly add 2 µl Ligation Enhancer into reaction tube remaining on the thermal cycler, gently pipette the entire volume up and down 6–8 times to mix thoroughly, continue incubate the tube at 28°C for 15 minutes and then place the tube on ice.
8. Aliquot 2 µl Cap Oligo into a separate, nuclease-free 200 µl PCR tube, incubate at 70°C for 2 minutes and then immediately place the tube on ice.
9. Add 2 µl of Cap Enzyme to Cap Oligo tube. Gently pipette the entire volume up and down 6–8 times to mix thoroughly.
10. Transfer these 4 µl of the Cap mixture to the Tail reaction tube from Step 7. Gently pipette the entire volume up and down 6–8 times to mix thoroughly.
11. Incubate at 28°C for 1 hour and then place the tube on ice.
12. Add 4 µl RT Oligo to the whole reaction from previous step. Gently pipette the entire volume up and down 6–8 times to mix thoroughly, then centrifuge briefly.
13. Incubate at 70°C for 2 minutes and then immediately place the tube on ice.
14. Pre-heat the thermal cycler to 50°C.
15. Add 4 µl of RT Enzyme. Gently pipette the entire volume up and down 6–8 times to mix thoroughly, then centrifuge briefly.
16. Incubate at 50°C for 1 hour and then place the tube on ice.
17. In a separate, sterile, nuclease-free, 200 µl PCR tube, set up PCR mixture as below.

Mixture	µl
PCR MasterMix	50
Universal Primer	4
Aligner*	4
Nuclease-free Water	17
Total	75

* For each reaction, only one of the 48 Aligners is used during this step.

Gently pipette the entire volume up and down 6–8 times to mix thoroughly, centrifuge briefly, then place the tube on ice.

18. Transfer this 75 µl mixture to the RT reaction tube from Step 16. Gently pipette the entire volume up and down 6–8 times, then centrifuge briefly and place the tube on ice.
19. Amplify the tube in the thermal cycler using the following PCR cycling conditions:
 - 1) 98°C for 30 seconds; 2) 13 cycles of: 98°C for 10 seconds, 60°C for 30 seconds, 72°C for 15 seconds; 3) 72°C for 10 minutes; 4) hold at 4°C.

Amplification products may vary based on RNA input amount, tissue type, and species. This process was optimized using 100 ng of purified mRNA from Adult Normal Lung Tissue Total RNA (Cat# R1234152-50) processed by MagSeq mRNA Purification Kit (Cat# K2012008). The number of PCR cycles can be adjusted to a maximum of 15 cycles if very low amount of product.

DNA Fragment Enrichment

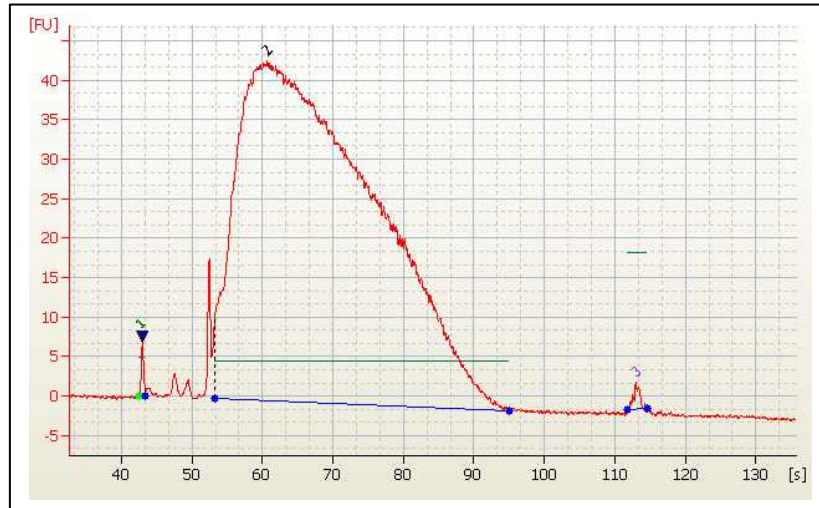
Recommend use Zymo DNA Clean & Concentrator-5 or AmsBio's MagSi-NGSPREP Beads for PCR clean up. Use 11 µl DNA storage Solution for elution.

Library Validation

Agilent Technologies 2100 Bioanalyzer is highly recommended as quality control system to validate DNA library generated from above.

1. Use 1 µl resuspended construct for DNA-1000 chip or High Sensitivity DNA chip.
2. Check the size, purity and concentration of the sample.

Figure 2. High Sensitivity DNA Chip Trace of the Final Library from an Adult Normal Lung Tissue mRNA Sample



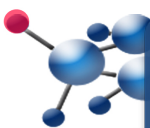
* Peak 1: Lower Marker; Peak 2: mRNA NGS Library; Peak 3: Upper Marker

Related Products

RapidSeq™ Mastermix mRNA Sample Prep Kit (Cat# KS075012)
 RapidSeq™ Mastermix Small RNA Sample Prep Kit (Cat# KS071012)
 RapidSeq™ High Yield Small RNA Sample Prep Kit (Cat# KS074012)
 MagSi-NGS PREP clean-up and size selection (Cat# MD60021, MD61021, MD62021)
 MagSeq mRNA purification Kit (Cat# K2012008)
 Adult Normal Lung Tissue mRNA (Cat# M1234152)

References

1. Wang Z, *et al.* *Nature Reviews Genetics* 2009. 10:57- 63.
2. Ozsolak F. *et al.* *Nature* 2009. 461:814 - 818.
3. Labaj PP. *et al.* *ISMB* 2011. 27:i383 - i391



UK & Rest of World

184 Milton Park, Abingdon
 OX14 4SE, Oxon, UK
 Tel: +44 (0) 1235 828 200
 Fax: +44 (0) 1235 820 482

Switzerland

Centro Nord-Sud 2E
 CH-6934 Bioggio-Lugano
 Tel: +41 (0) 91 604 55 22
 Fax: +41 (0) 91 605 17 85

Deutschland

Bockenheimer Landstr. 17/19
 60325 Frankfurt/Main
 Tel: +49 (0) 69 779099
 Fax: +49 (0) 69 13376880

North America

23591 El Toro Rd, Suite #180
 Lake Forest, CA 92630
 Tel: + 1 800 987 0985
 Fax: + 1 949 265 7703

amsbio

info@amsbio.com

www.amsbio.com
 AMS Biotechnology