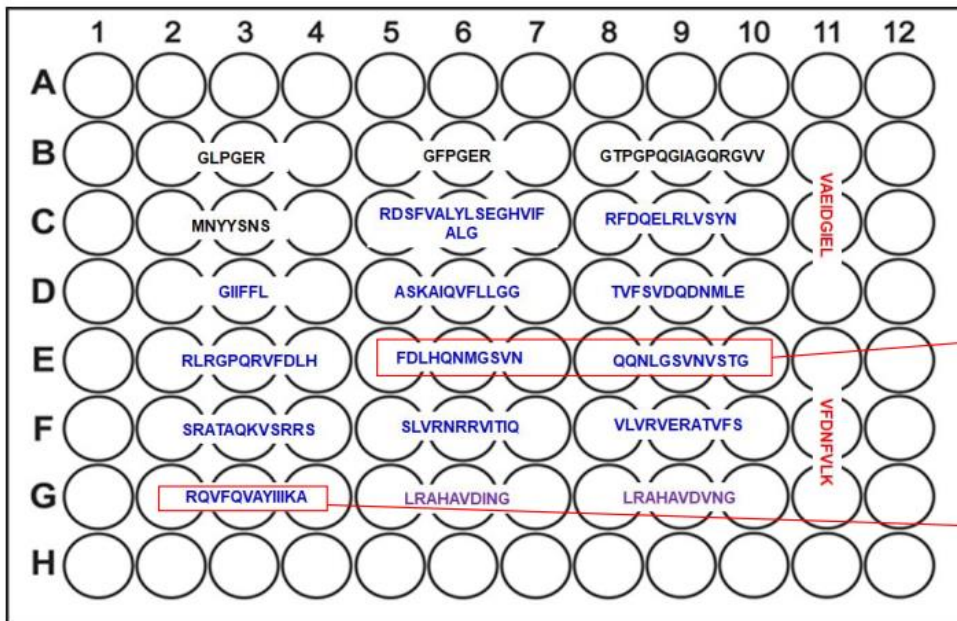


ARRAY MAP

Cat. No. MSI901 Mesenchymal rich integrin binding motif



- Black: collagen-derived, $\alpha 2\beta 1$ binding
- Blue: laminin-derived, $\alpha 6\beta 1$
- Violet: N-cadherin binding
- Red: Tenascin-derived, $\alpha 7\beta 1$ or $\alpha 9\beta 1$

- Syndecan-4 binding motif

FDLHQNMGSVN
QQNLGSVNVSTG

- $\alpha 1\beta 1$, $\alpha 2\beta 1$ binding motif


RQVFQVAYIIKA

DESCRIPTION	Code	Pack
MAPTrix™ Screen for Mesenchymal cell adhesion (Mesenchymal rich integrin binding motifs)	MSI901	2 plates per case
	MSI902	6 plates per case
	MSI903	10 plates per case

STORAGE


Stable & functional for 2 years when stored at room temperature and refrigerator.

AMSBIO | www.amsbio.com | info@amsbio.com

 **UK & Rest of the World**
184 Park Drive, Milton Park
Abingdon OX14 4SE, U.K.
T: +44 (0) 1235 828 200
F: +44 (0) 1235 820 482

 **North America**
1035 Cambridge Street,
Cambridge, MA 02141.
T: +1 (617) 945-5033 or
T: +1 (800) 987-0985
F: +1 (617) 945-8218

 **Germany**
Bockenheimer Landstr. 17/19
60325 Frankfurt/Main
T: +49 (0) 69 779099
F: +49 (0) 69 13376880

 **Switzerland**
Via Lisano 3
(CP.683)
6900 Massagno
T: +41 (0) 91 604 55 22
F: +41 (0) 91 605 17 85

ASSAY PROCEDURE


1. Introduction

Cell adhesion is a complex process involved in embryogenesis, migration/invasion, tissue remodeling, and wound healing. To perform these processes, cells adhere to extracellular matrix components via adhesion receptors such as integrins, forming complexes with components of the cytoskeleton that ultimately affect cell motility, differentiation, proliferation, and survival. MAPTriX™ Screen provides a rapid, quantitative method for evaluating cell adhesion.

2. Cell Adhesion Assay Protocol (For 96 well plate)

1. Under sterile conditions, re-hydrate the MAPTriX Screen plate with 200 µL of PBS (1x) per well for 20 minutes at room temperature.
2. Remove the PBS from the rehydrated plates
3. Prepare a cell suspension, typically, $0.1 - 2.0 \times 10^6$ cells/mL in serum free media.
4. Add 150 µL of the cell suspension to the inside of each well and centrifuged to promote interaction with the plate surface.
5. Non-adherent cells are gently removed with 3 times PBS washes. The percentage of adherent cells is determined by measuring Calcein AM fluorescence before and after the wash steps.

AMSBIO | www.amsbio.com | info@amsbio.com

 **UK & Rest of the World**
184 Park Drive, Milton Park
Abingdon OX14 4SE, U.K.
T: +44 (0) 1235 828 200
F: +44 (0) 1235 820 482

 **North America**
1035 Cambridge Street,
Cambridge, MA 02141.
T: +1 (617) 945-5033 or
T: +1 (800) 987-0985
F: +1 (617) 945-8218

 **Germany**
Bockenheimer Landstr. 17/19
60325 Frankfurt/Main
T: +49 (0) 69 779099
F: +49 (0) 69 13376880

 **Switzerland**
Via Lisano 3
(CP.683)
6900 Massagno
T: +41 (0) 91 604 55 22
F: +41 (0) 91 605 17 85