



# MagSi-DNA Vegetal II

*Fast and Cost-effective  
Extraction of Genomic DNA from Plants Seeds*

## DNA Extraction from plant seeds

MagSi-DNA Vegetal II allows fast and cost-effective extraction of DNA from plant samples. The kit is optimized to extract DNA from plant samples with the highest purity and works well with plant samples rich in fats and oils, especially seeds. The extraction chemistry is validated on many different species, and can be customized to meet any specific requirements of yields, purity, working volumes. The kit can be used on any DNA extraction robot.

### General Features

- Short protocols, complete processing at room temperature possible (after sample lysis)
- High yield and purity
- Suitable for many genomic applications such as SNP genotyping, DNA sequencing, etc.
- Preparation time for 96 samples: 25 min after lysis

### Quality

- Validated for many plants species, e.g. wheat, maize, sunflower, tomato, pepper, cucumber, lettuce, onion, etc.
- Compatible with oil seed crops
- High reproducibility
- Good DNA integrity
- Efficient removal of PCR inhibitors

### Easy to Automate

- Minimal accessory requirements
- KingFisher™ / MagMAX™ / BioSprint instrument protocols available on request
- Consumables for KingFisher™ Flex / 96 MagMAX™ Express-96 / BioSprint 96 available
- Compatible with most liquid handling robots (e.g. Hamilton®, TECAN®, Biomek®)
- Various magnetic separators available

### Flexibility

- Suitable for small, medium and high-throughput automation
- Scalable for different sample volumes
- Shortened protocols for less demanding applications
- Small elution volumes
- Aqueous quickwash or air-dry to remove ethanol

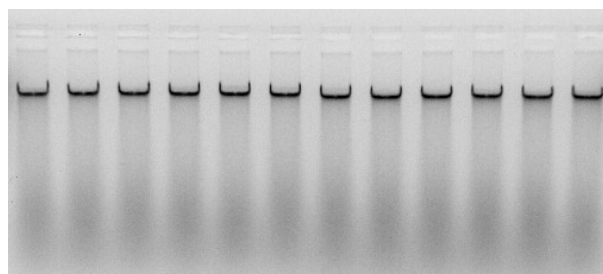


Figure 1. 1% Agarose gel showing high molecular weight DNA extracted from 12 wheat seeds

Table 1. Yield and purity obtained from different seeds

Plant species	DNA (ng/μL)	260/280	260/230
Wheat (Triticum L.)	54.30	1.87	2.20
Sunflower (Helianthus annuus)	27.97	1.72	1.47
Pepper (Capsicum annum)	17.11	1.74	1.72
Cucumber (Cucumis Sativus)	1.69	1.80	1.49
Tomato (Solanum lycopersicum)	7.17	1.47	1.22
Lettuce (Lactuca sativa)	69.24	1.74	1.71

Art. No.	Product	Volume
MDKT00160096	MagSi-DNA Vegetal II (96 preps)	96 preps
MDKT00160960	MagSi-DNA Vegetal II (10 x 96 preps)	10 x 96 preps
	For bulk quantities of the kit contact AMSBIO	

AMSBIO | [www.amsbio.com](http://www.amsbio.com) | [info@amsbio.com](mailto:info@amsbio.com)

 **UK & Rest of the World**  
184 Park Drive, Milton Park  
Abingdon OX14 4SE, UK  
T: +44 (0)1235 828 200  
F: +44 (0) 1235 820 482

 **North America**  
1035 Cambridge Street,  
Cambridge, MA 02141  
T: +1 (617) 945-5033 or  
T: +1 (800) 987-0985  
F: +1 (617) 945-8218

 **Germany**  
Bockenheimer Landstr. 17/19  
60325 Frankfurt/Main  
T: +49 (0) 69 779099  
F: +49 (0) 69 13376880

 **Switzerland**  
Centro Nord-Sud 2E  
CH-6934 Bioggio-Lugano  
T: +41(0) 91 604 55 22  
F: +41(0) 91 605 17 85