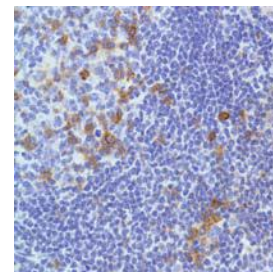


Rabbit Anti-Human CD278 Monoclonal Antibody (Clone SP98)

CATALOG #:

- M3980** 0.1 ml rabbit monoclonal antibody purified by protein A/G in PBS/1% BSA buffer pH 7.6 with less than 0.1% sodium azide.
- M3984** 1 ml rabbit monoclonal antibody purified by protein A/G in PBS/1% BSA buffer pH 7.6 with less than 0.1% sodium azide.
- M3981** 7 ml pre-diluted rabbit monoclonal antibody purified by protein A/G in TBS/1% BSA buffer pH 7.6 with less than 0.1% sodium azide.



Human reactive lymph node stained with anti-CD278 antibody

INTENDED USE:

For Research Use Only. Not for use in diagnostic procedures.

CLONE:

SP98

IMMUNOGEN:

Synthetic peptide corresponding to the C-terminus of human CD278.

IG ISOTYPE:

Rabbit IgG

EPITOPE:

Not determined

MOLECULAR WEIGHT:

23kDa

SPECIES REACTIVITY:

Human (tested). Mouse (by sequence homology). Others not tested.

DESCRIPTION:

CD278 belongs to the CD28 and CTLA-4 cell-surface receptor family and is highly expressed in activated T cells. It is essential both for efficient interaction between T and B cells and for normal antibody responses to T cell dependent antigens. It enhances all basic T cell responses to a foreign antigen, namely proliferation, secretion of lymphokines, up-regulation of molecules that mediate cell-cell interaction, and effective help for antibody secretion by B cells.

APPLICATIONS:

Immunohistochemistry (IHC)

IHC PROCEDURE:

Specimen Preparation: Formalin-fixed, paraffin-embedded tissues are suitable for use with this primary antibody.

Deparaffinization: Deparaffinize slides using xylene or xylene alternative and graded alcohols.

Antibody Dilution: If using the concentrate format of this product, dilute the antibody 1:100. The dilutions are estimates; actual results may differ because of variability in methods and protocols.

Antigen Retrieval: Boil tissue section in EDTA buffer, pH 8.0 for 10 min followed by cooling at RT for 20 min.

Primary Antibody Incubation: Incubate for 30 minutes at RT.

Slide Washing: Slides must be washed in between steps. Rinse slides with PBS/0.05% Tween.

Visualization: Detect the antibody as instructed by the instructions provided with the visualization system.

POSITIVE CONTROL:

Tonsil, reactive lymph node

CELLULAR LOCALIZATION:

Membrane

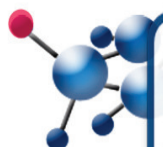
STORAGE & STABILITY:

Store at 2-8°C. Do not freeze. The user must validate any other storage conditions. When properly stored, the reagent is stable to the date indicated on the label. Do not use the reagent beyond the expiration date.

There are no definitive signs to indicate instability of this product; therefore, positive and negative controls should be tested simultaneously with unknown specimens.

WARNINGS & PRECAUTIONS:

1. Avoid contact of reagents with eyes and mucous membranes. If reagents come into contact with sensitive areas, wash with copious amounts of water.
2. This product is harmful if swallowed.
3. Consult local or state authorities with regard to recommended method of disposal.
4. Avoid microbial contamination of reagents.



UK & Rest of World

184 Milton Park, Abingdon
OX14 4SE, Oxon, UK
Tel: +44 (0) 1235 828 200
Fax: +44 (0) 1235 820 482

Switzerland

Centro Nord-Sud 2E
CH-6934 Bioggio-Lugano
Tel: +41 (0) 91 604 55 22
Fax: +41 (0) 91 605 17 85

Deutschland

Bockenheimer Landstr. 17/19
60325 Frankfurt/Main
Tel: +49 (0) 69 779099
Fax: +49 (0) 69 13376880

United States

23591 El Toro Rd, Suite #167
Lake Forest, CA 92630
Tel: +1 800 987 0985
Fax: +1 949 265 7703