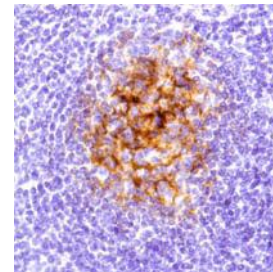


## Rabbit Anti-Human C4d Monoclonal Antibody (Clone SP91)

<b>CATALOG #:</b>	<b>M3910</b> 0.1 ml rabbit monoclonal antibody purified by protein A/G in PBS/1% BSA buffer pH 7.6 with less than 0.1% sodium azide.
	<b>M3914</b> 1 ml rabbit monoclonal antibody purified by protein A/G in PBS/1% BSA buffer pH 7.6 with less than 0.1% sodium azide.
	<b>M3911</b> 7 ml pre-diluted rabbit monoclonal antibody purified by protein A/G in TBS/1% BSA buffer pH 7.6 with less than 0.1% sodium azide.



*Human tonsil stained with anti-C4d antibody*

<b>INTENDED USE:</b>	For Research Use Only. Not for use in diagnostic procedures.
<b>CLONE:</b>	SP91
<b>IMMUNOGEN:</b>	Synthetic peptide corresponding to C-terminus of human C4d protein
<b>IG ISOTYPE:</b>	Rabbit IgG
<b>EPITOPE:</b>	Not determined
<b>MOLECULAR WEIGHT</b>	84kDa
<b>SPECIES REACTIVITY:</b>	Human (tested). Others not tested.
<b>DESCRIPTION:</b>	C4 plays a central role in the activation of the classical pathway of the complement system. Prior to secretion, the single-chain precursor is enzymatically cleaved to yield the non-identical chains (alpha, beta and gamma). During activation, the alpha chain is cleaved by C1 into C4a and C4b, and C4b stays linked to the beta and gamma chains. Further degradation of C4b by C1 into the inactive fragments C4c and C4d blocks the generation of C3 convertase.
<b>APPLICATIONS:</b>	Immunohistochemistry (IHC)
<b>IHC PROCEDURE:</b>	<p><b>Specimen Preparation:</b> Formalin-fixed, paraffin-embedded tissues are suitable for use with this primary antibody.</p> <p><b>Deparaffinization:</b> Deparaffinize slides using xylene or xylene alternative and graded alcohols.</p> <p><b>Antibody Dilution:</b> If using the concentrate format of this product, dilute the antibody 1:100. The dilutions are estimates; actual results may differ because of variability in methods and protocols.</p> <p><b>Antigen Retrieval:</b> Boil tissue section in 1mM EDTA, pH 8.0 for 10 min followed by cooling at RT for 20 min.</p> <p><b>Primary Antibody Incubation:</b> Incubate for 30 minutes at RT.</p> <p><b>Slide Washing:</b> Slides must be washed in between steps. Rinse slides with PBS/0.05% Tween.</p> <p><b>Visualization:</b> Detect the antibody as instructed by the instructions provided with the visualization system.</p>
<b>POSITIVE CONTROL:</b>	Tonsil
<b>CELLULAR LOCALIZATION:</b>	Secreted protein
<b>STORAGE &amp; STABILITY</b>	Store at 2-8°C. Do not freeze. The user must validate any other storage conditions. When properly stored, the reagent is stable to the date indicated on the label. Do not use the reagent beyond the expiration date. There are no definitive signs to indicate instability of this product; therefore, positive and negative controls should be tested simultaneously with unknown specimens.
<b>WARNINGS &amp; PRECAUTIONS:</b>	<ol style="list-style-type: none"> <li>1. Avoid contact of reagents with eyes and mucous membranes. If reagents come into contact with sensitive areas, wash with copious amounts of water.</li> <li>2. This product is harmful if swallowed.</li> <li>3. Consult local or state authorities with regard to recommended method of disposal.</li> <li>4. Avoid microbial contamination of reagents.</li> </ol>



**UK & Rest of World**  
184 Milton Park, Abingdon  
OX14 4SE, Oxon, UK  
Tel: +44 (0) 1235 828 200  
Fax: +44 (0) 1235 820 482

**Switzerland**  
Centro Nord-Sud 2E  
CH-6934 Bioggio-Lugano  
Tel: +41 (0) 91 604 55 22  
Fax: +41 (0) 91 605 17 85

**Deutschland**  
Bockenheimer Landstr. 17/19  
60325 Frankfurt/Main  
Tel: +49 (0) 69 779099  
Fax: +49 (0) 69 13376880

**United States**  
23591 El Toro Rd, Suite #167  
Lake Forest, CA 92630  
Tel: + 1 800 987 0985  
Fax: + 1 949 265 7703