

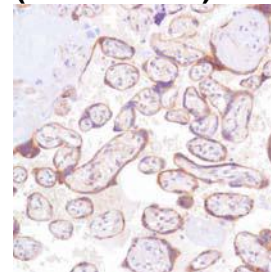
Rabbit Anti-Human Glypican-3 Monoclonal Antibody (Clone SP86)

CATALOG #:

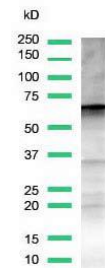
M3860 0.1 ml rabbit monoclonal antibody purified by protein A/G in PBS/1% BSA buffer pH 7.6 with less than 0.1% sodium azide.

M3864 1.0 ml rabbit monoclonal antibody purified by protein A/G in PBS/1% BSA buffer pH 7.6 with less than 0.1% sodium azide.

M3861 7 ml pre-diluted rabbit monoclonal antibody purified by protein A/G in TBS/1% BSA buffer pH 7.6 with 0.1% sodium azide. (For IHC only)



Human placenta stained with anti-glypican-3 antibody



Western blot analysis of HepG2 cell lysate with anti-glypican-3 antibody

INTENDED USE:

For Research Use Only. Not for use in diagnostic procedures.

CLONE:

SP86

IMMUNOGEN:

Synthetic peptide derived from C-terminus of human glypican-3 protein

IG ISOTYPE:

Rabbit IgG

EPITOPE:

Not determined

MOLECULAR WEIGHT

64kDa

SPECIES REACTIVITY:

Human (tested). Others not tested.

DESCRIPTION:

Glypican-3 (GPC3) is a cell surface proteoglycan that bears heparan sulfate. It may be involved in the suppression/modulation of growth in the predominantly mesodermal tissues and organs. The expression of GPC3 is relatively high in liver, placenta, lung, and kidney. Alteration of GPC3 expression is associated with several malignancies such as hepatocellular carcinoma (HCC). This antibody can be used to detect GPC3 in both normal and neoplastic tissue types. This antibody should not be used to differentiate hepatocellular carcinoma (HCC) from either normal liver or other types of liver disease.

APPLICATIONS:

Immunohistochemistry (IHC) and Western Blotting

IHC PROCEDURE:

Specimen Preparation: Formalin-fixed, paraffin-embedded tissues are suitable for use with this primary antibody.

Deparaffinization: Deparaffinize slides using xylene or xylene alternative and graded alcohols.

Antibody Dilution: If using the concentrate format of this product, dilute the antibody 1:100. The dilutions are estimates; actual results may differ because of variability in methods and protocols.

Antigen Retrieval: Boil tissue section in 10mM citrate buffer, pH 6.0 for 10 min followed by cooling at RT for 20 min.

Primary Antibody Incubation: Incubate for 30 minutes at RT.

Slide Washing: Slides must be washed in between steps. Rinse slides with PBS/0.05% Tween.

Visualization: Detect the antibody as instructed by the instructions provided with the visualization system.

WESTERN BLOTTING:

Recommended starting protocol: Dilute the antibody 1:25. Incubate for 1 hour at room temperature. The dilution is an estimate; actual results may differ because of variability in methods and protocols. Optimal dilution and procedure should be determined by the end user.

POSITIVE CONTROL:

Placenta

CELLULAR LOCALIZATION:

Membrane

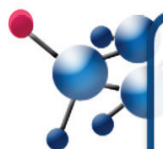
STORAGE & STABILITY

Store at 2-8°C. Do not freeze. The user must validate any other storage conditions. When properly stored, the reagent is stable to the date indicated on the label. Do not use the reagent beyond the expiration date.

There are no definitive signs to indicate instability of this product; therefore, positive and negative controls should be tested simultaneously with unknown specimens.

WARNINGS & PRECAUTIONS:

1. Avoid contact of reagents with eyes and mucous membranes. If reagents come into contact with sensitive areas, wash with copious amounts of water.
2. This product is harmful if swallowed.



UK & Rest of World

184 Milton Park, Abingdon
OX14 4SE, Oxon, UK
Tel: +44 (0) 1235 828 200
Fax: +44 (0) 1235 820 482

Switzerland

Centro Nord-Sud 2E
CH-6934 Bioggio-Lugano
Tel: +41 (0) 91 604 55 22
Fax: +41 (0) 91 605 17 85

Deutschland

Bockenheimer Landstr. 17/19
60325 Frankfurt/Main
Tel: +49 (0) 69 779099
Fax: +49 (0) 69 13376880

United States

23591 El Toro Rd, Suite #167
Lake Forest, CA 92630
Tel: +1 800 987 0985
Fax: +1 949 265 7703