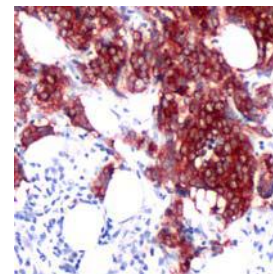


Rabbit Anti-Human Tau Monoclonal Antibody (Clone SP70)

CATALOG #:	M3700 0.1 ml rabbit monoclonal antibody purified by protein A/G in PBS/1% BSA buffer pH 7.6 with less than 0.1% sodium azide.
	M3704 1 ml rabbit monoclonal antibody purified by protein A/G in PBS/1% BSA buffer pH 7.6 with less than 0.1% sodium azide.
	M3701 7 ml pre-diluted rabbit monoclonal antibody purified by protein A/G in TBS/1% BSA buffer pH 7.6 with less than 0.1% sodium azide.



Human breast carcinoma stained with anti-tau antibody

INTENDED USE:	For Research Use Only. Not for use in diagnostic procedures.
CLONE:	SP70
IMMUNOGEN:	Synthetic peptide derived from N-terminus of human tau protein.
IG ISOTYPE:	Rabbit IgG
EPITOPE:	Not determined
MOLECULAR WEIGHT	45-68kDa
SPECIES REACTIVITY:	Human (tested). Others not tested.
DESCRIPTION:	Tau is a neuronal microtubule associated protein found predominantly on axons. The function of tau is to promote tubulin polymerization and stabilize microtubules, and to link certain signaling pathways to the cytoskeleton. Tau, in its hyperphosphorylated form, is the major component of paired helical filaments (PHF) and neurofibrillary lesions in Alzheimer's disease (AD) brain. Hyperphosphorylation impairs the microtubule binding function of tau, resulting in the destabilization of microtubules in AD brains, ultimately leading to the degeneration of the affected neurons. Hyperphosphorylated tau is also found in a range of other central nervous system disorders. Numerous serine/threonine kinases, including GSK3 beta, PKA, Cdk5, and casein kinase II can phosphorylate tau. Alternate splicing of tau mRNA and differential phosphorylation contributes to the heterogeneity of tau.
APPLICATIONS:	Immunohistochemistry (IHC)
IHC PROCEDURE:	<p>Specimen Preparation: Formalin-fixed, paraffin-embedded tissues are suitable for use with this primary antibody.</p> <p>Deparaffinization: Deparaffinize slides using xylene or xylene alternative and graded alcohols.</p> <p>Antibody Dilution: If using the concentrate format of this product, dilute the antibody 1:100. The dilutions are estimates; actual results may differ because of variability in methods and protocols.</p> <p>Antigen Retrieval: Boil tissue section in 10mM citrate buffer, pH 6.0 for 10 min followed by cooling at RT for 20 min.</p> <p>Primary Antibody Incubation: Incubate for 30 minutes at RT.</p> <p>Slide Washing: Slides must be washed in between steps. Rinse slides with PBS/0.05% Tween.</p> <p>Visualization: Detect the antibody as instructed by the instructions provided with the visualization system.</p>
POSITIVE CONTROL:	Breast carcinoma
CELLULAR LOCALIZATION:	Cytoplasm
STORAGE & STABILITY	<p>Store at 2-8°C. Do not freeze. The user must validate any other storage conditions. When properly stored, the reagent is stable to the date indicated on the label. Do not use the reagent beyond the expiration date.</p> <p>There are no definitive signs to indicate instability of this product; therefore, positive and negative controls should be tested simultaneously with unknown specimens.</p>
WARNINGS & PRECAUTIONS:	<ol style="list-style-type: none"> Avoid contact of reagents with eyes and mucous membranes. If reagents come into contact with sensitive areas, wash with copious amounts of water. This product is harmful if swallowed. Consult local or state authorities with regard to recommended method of disposal. Avoid microbial contamination of reagents.



UK & Rest of World
 184 Milton Park, Abingdon
 OX14 4SE, Oxon, UK
 Tel: +44 (0) 1235 828 200
 Fax: +44 (0) 1235 820 482

Switzerland
 Centro Nord-Sud 2E
 CH-6934 Bioggio-Lugano
 Tel: +41 (0) 91 604 55 22
 Fax: +41 (0) 91 605 17 85

Deutschland
 Bockenheimer Landstr. 17/19
 60325 Frankfurt/Main
 Tel: +49 (0) 69 779099
 Fax: +49 (0) 69 13376880

United States
 23591 El Toro Rd, Suite #167
 Lake Forest, CA 92630
 Tel: +1 800 987 0985
 Fax: +1 949 265 7703