

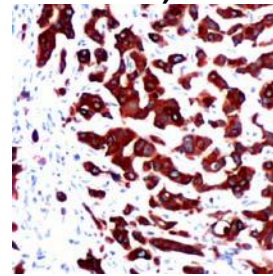
## Rabbit Anti-Human Keratin 7 Monoclonal Antibody (Clone SP52)

### CATALOG #:

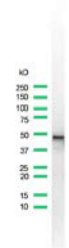
**M3520** 0.1 ml rabbit monoclonal antibody purified by protein A/G in PBS/1% BSA buffer pH 7.6 with less than 0.1% sodium azide.

**M3524** 1 ml rabbit monoclonal antibody purified by protein A/G in PBS/1% BSA buffer pH 7.6 with less than 0.1% sodium azide.

**M3521** 7 ml pre-diluted rabbit monoclonal antibody purified by protein A/G in TBS/1% BSA buffer pH 7.6 with less than 0.1% sodium azide. (For IHC only)



Human breast carcinoma stained with anti-keratin 7 antibody



Western Blot analysis of HeLa cell lysate with keratin 7 antibody

### INTENDED USE:

For Research Use Only. Not for use in diagnostic procedures.

### CLONE:

SP52

### IMMUNOGEN:

A synthetic peptide corresponding to C-terminus of human keratin 7 protein

### IG ISOTYPE:

Rabbit IgG

### EPITOPE:

C-terminus

### MOLECULAR WEIGHT

54kDa

### SPECIES REACTIVITY:

Human (tested). Others not tested.

### DESCRIPTION:

Cytokeratin 7 is a basic cytokeratin which is found in most glandular and transitional epithelia but not in the stratified squamous epithelia. Keratin 7 is expressed in the epithelial cells of ovary, lung, and breast but not of colon, prostate, or gastrointestinal tract.

### APPLICATIONS:

Immunohistochemistry (IHC) and Western Blotting

### IHC PROCEDURE:

**Specimen Preparation:** Formalin-fixed, paraffin-embedded tissues are suitable for use with this primary antibody.

**Deparaffinization:** Deparaffinize slides using xylene or xylene alternative and graded alcohols.

**Antibody Dilution:** If using the concentrate format of this product, dilute the antibody 1:100. The dilutions are estimates; actual results may differ because of variability in methods and protocols.

**Antigen Retrieval:** Boil tissue section in 10mM citrate buffer, pH 6.0 for 10 min followed by cooling at RT for 20 min.

**Primary Antibody Incubation:** Incubate for 30 minutes at RT.

**Slide Washing:** Slides must be washed in between steps. Rinse slides with PBS/0.05% Tween.

**Visualization:** Detect the antibody as instructed by the instructions provided with the visualization system.

### WESTERN BLOTTING:

Recommended starting protocol: Dilute the antibody 1:25. Incubate for 1 hour at room temperature. The dilution is an estimate; actual results may differ because of variability in methods and protocols. Optimal dilution and procedure should be determined by the end user.

### POSITIVE CONTROL:

Breast or ovarian carcinoma

### CELLULAR LOCALIZATION:

Cytoplasm

### STORAGE & STABILITY

Store at 2-8°C. Do not freeze. The user must validate any other storage conditions. When properly stored, the reagent is stable to the date indicated on the label. Do not use the reagent beyond the expiration date.

There are no definitive signs to indicate instability of this product; therefore, positive and negative controls should be tested simultaneously with unknown specimens.

### WARNINGS & PRECAUTIONS:

1. Avoid contact of reagents with eyes and mucous membranes. If reagents come into contact with sensitive areas, wash with copious amounts of water.
2. This product is harmful if swallowed.
3. Consult local or state authorities with regard to recommended method of disposal.
4. Avoid microbial contamination of reagents.



#### UK & Rest of World

184 Milton Park, Abingdon  
OX14 4SE, Oxon, UK  
Tel: +44 (0) 1235 828 200  
Fax: +44 (0) 1235 820 482

#### Switzerland

Centro Nord-Sud 2E  
CH-6934 Bioggio-Lugano  
Tel: +41 (0) 91 604 55 22  
Fax: +41 (0) 91 605 17 85

#### Deutschland

Bockenheimer Landstr. 17/19  
60325 Frankfurt/Main  
Tel: +49 (0) 69 779099  
Fax: +49 (0) 69 13376880

#### United States

23591 El Toro Rd, Suite #167  
Lake Forest, CA 92630  
Tel: +1 800 987 0985  
Fax: +1 949 265 7703