

ExoPure™ Immunoplates (Overall Exosome Isolation, cell media, colorimetric assay)

(Catalog # M1013-100-T; 100 assays (96 well transparent immunoplate for colorimetric readings; Store at 4°C))

I. Introduction:

Exosomes are small endosome derived lipid nanoparticles (50-120 nm) actively secreted by exocytosis by most living cells. Exosome release occurs either constitutively or upon induction, under both normal and pathological conditions, in a dynamic, regulated and functionally relevant manner. Both the amount and molecular composition of released exosomes depend on the state of a parent cell. Exosomes have been isolated from diverse cell lines (hematopoietic cells, tumor lines, primary cultures, and virus infected cells) as well as from biological fluids in particular blood (e.g. serum and plasma from cancer patients) and other body fluids (broncho alveolar lavage fluid, pleural effusions, synovial fluid, urine, amniotic fluid, semen, saliva etc). Exosomes have pleiotropic physiological and pathological functions and an emerging role in diverse pathological conditions such as cancer, infectious and neurodegenerative diseases.

ExoPure™ Immunoplates are 96 multiwell plates covalently pre-coated with specific exosome-binding antibodies allowing exosome capture and isolation from different sources (cell supernatant, human plasma, serum, urine and saliva). Covalent coating improves the correct orientation of antibodies maximizing the quantity of immunocaptured exosomes and increasing the binding efficiency of the plate. In addition, the coating chemistry reduces the non-specific binding of circulating protein complexes and cell debris, and it helps the enrichment of exosome subpopulations. Biovision offers different types of plates for capturing the overall or enriching specific exosome subpopulations (tumor, neural, glial, monocytes and platelets). Plates are blocked and stabilized for long term storage. Plates are pre-coated with anti-Rabbit or anti-Mouse antibodies. The type of antibody used for coating is indicated on the label of the plate. To avoid cross-reactivity in detection, do not use the same type of antibody used for coating. Transparent, white and black plates are available depending on the downstream detection approach (colorimetric, luminometric and fluorimetric respectively). ELISA immunoplates are ready to use.

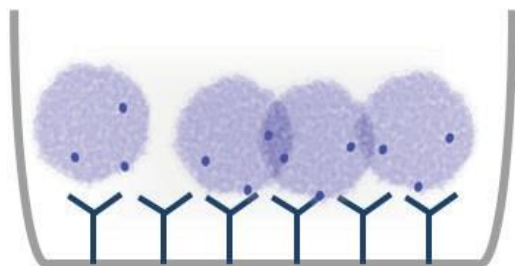


Figure 1. ExoPure™ Immunoplate for capturing overall Exosomes. Plates are coated with antibodies against exosome surface antigens, present on overall exosome population.

II. Application:

- ExoPure™ immunoplates allow multiple profiling of exosome markers from a single sample or screening of a large number of samples.
- Exosome capture and quantification from human biofluids (plasma, serum, urine, saliva) and from human or mouse cell media.
- Titration of purified exosomes.
- Immunoplates are also suitable for nucleic acid extraction from immunocaptured exosomes on the plate.
- Small amount of sample required (100 µl per well). Open platform for customized coating solutions.
- Immunoplates are ready to use and stable for long term (up to 2 years). No exosome pre-purification is required (by ultracentrifugation or other methods).

III. Sample Type:

- Human biological fluids: Cell culture supernatant.
- Up to 100 µl of biological sample can be loaded per well.
- Unfractionated plasma sample can be directly used for capture.
- Using urine, it is recommended to concentrate the sample 10X, according to our protocol, before loading on the plate.
- Plates are pre-coated with monoclonal anti-Mouse antibodies.

IV. Package Contents (for Overall Exosomes capture from cell culture supernatant):

Components	M1013-100-T
Standard 96-well format pre-coated plate (Transparent plate)	1 plate

V. User Supplied Reagents and Equipment:

- Single-use and/or pipettes with disposable tips 2-100 µl

VI. Shipment and Storage:

- Immunoplates are shipped and stored at 4°C for up to 24 months, if unopened and 6 months at 4°C after opening. DO NOT FREEZE!

AMSBIO | www.amsbio.com | info@amsbio.com

 **UK & Rest of the World**
184 Park Drive, Milton Park
Abingdon OX14 4SE, UK
T: +44 (0)1235 828 200
F: +44 (0) 1235 820 482

 **North America**
1035 Cambridge Street,
Cambridge, MA 02141
T: +1 (617) 945-5033 or
T: +1 (800) 987-0985
F: +1 (617) 945-8218

 **Germany**
Bockenheimer Landstr. 17/19
60325 Frankfurt/Main
T: +49 (0) 69 779099
F: +49 (0) 69 13376880

 **Switzerland**
Centro Nord-Sud 2E
CH-6934 Bioggio-Lugano
T: +41(0) 91 604 55 22
F: +41(0) 91 605 17 85

FOR RESEARCH USE ONLY!

VII. Reagent Preparation and Storage Conditions:

- Immunoplates are individually sealed in an opaque aluminum zip lock bag, compliant to pharmaceutical regulations. The pouch is easy to open and is resealable by zip-lock feature.
- Immunoplates can be stored at 4°C for up to 24 months, if unopened and 6 months at 4°C after opening.

VIII. ExoPure™ Assay Protocol:

- 1. Cell culture medium sample preparation:** Prepare samples by 3 centrifugation steps to eliminate red blood cells and cellular debris. After each step, transfer the supernatant to a new tube and discard the pellet.
 - a) 10 min at 300g at 4°C (save the supernatant; discard pellet).
 - b) 20 min at 1200g at 4°C (save the supernatant; discard pellet).
 - c) 30 min at 10,000g at 4°C (save the supernatant; discard pellet).
 Concentrate cell supernatant 10-20 times in spin concentrator*. *The quantity of exosomes could vary between samples. Concentration factors are given for information purposes only, a larger starting amount of sample should be used if the signal is weak.
- 2. Exosome binding on ELISA immunoplate: Note: Make sure to never touch the bottom or sides of the wells or you will scrape off your samples/standards. As a reminder “No Touch” is placed on that line.**
 - a) The plate is ready to use no pre-washing is required.
 - b) Add up to 100 µl of sample per well, adjust with 1X PBS up to 100 µl if necessary.
 - c) Seal the plate with parafilm and incubate at room temperature while shaking for 20 min.
 - d) Depending on your sample, incubate overnight: cell culture supernatant samples at 37°C.
 - e) Wash the plate (washing buffer suggested: PBS + 0.05 % Tween20). Add 200 µl/well of Washing Buffer and discard plate contents by pouring out. No Touch. Wash 3 times with 300 µl/well of Washing Buffer. After each addition, pour off wash. No Touch. Thus, prepared plate can be used for analysis of exosome markers via ELISA assay.
- 3.** Transparent plates are used for the downstream colorimetric detection approach following incubation with a primary antibody against an exosome surface marker. Moreover, captured exosomes are suitable for lysis and extraction of exosome-associated RNAs.
- 4. Sensitivity:** Immunoplates allow exosome protein profiling without pre-purification (by ultracentrifuge, chemical precipitation or microfiltration). Immunoplates are useful tools for immunocapturing exosomes from biofluids or culture media, for protein analyses and protein marker profiling. They allow quantitative and qualitative simultaneous analysis of different protein markers (Figure 2) from the same sample, or expression profiling of a single marker in different samples (Figure 3), without exosome pre-purification via ultracentrifuge or other methods. CD9 expression (Figure 4) of immunocaptured plasma exosomes mimic that of the correspondent ultracentrifuged fraction. No significant cross-reactivity is observed with soluble antigens or other vesicle-associated proteins (Figure 5).

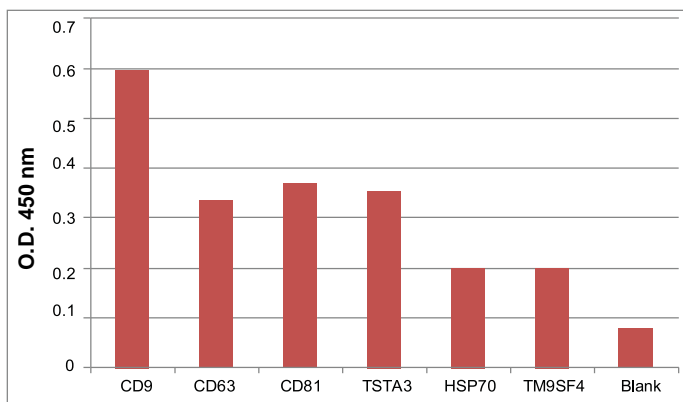


Figure 2. Common exosomal biomarkers analysis in a healthy donor's plasma sample.

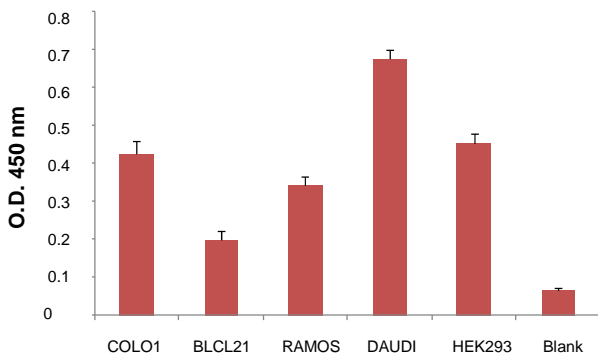


Figure 3. CD63 profiling on exosomes derived from supernatants of different cell lines.

FOR RESEARCH USE ONLY!

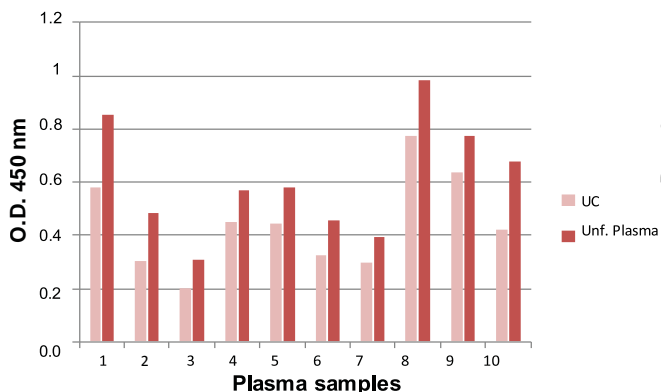


Figure 4. Comparison of CD9 detection on purified (ultracentrifuged) plasma exosomes vs unfractionated samples in a set of healthy donor's plasma.

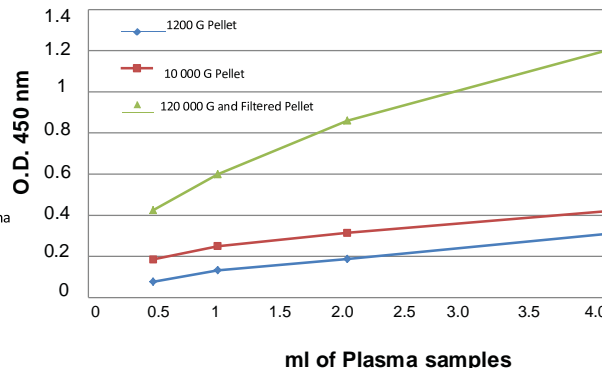


Figure 5. Immunoplate is selective in capturing purified exosomes (pellet after centrifugation 120,000g) and no other circulating microvesicle (pellet 1200g and 10,000g).

IX. Related Products:

Products/Catalog Number
ExoPure™ Immunoplates (Overall Exosome Isolation, plasma/urine, colorimetric assay) # M1004-100-T
ExoPure™ Immunoplates (Overall Exosome Isolation, plasma/urine, luminometric assay) # M1005-100-W
ExoPure™ Immunoplates (Overall Exosome Isolation, plasma/urine, fluorimetric assay) # M1006-100-B
ExoPure™ Immunoplates (Overall Exosome Isolation, serum, colorimetric assay) # M1007-100-T
ExoPure™ Immunoplates (Overall Exosome Isolation, serum, luminometric assay) # M1008-100-W
ExoPure™ Immunoplates (Overall Exosome Isolation, serum, fluorimetric assay) # M1009-100-B
ExoPure™ Immunoplates (Overall Exosome Isolation, saliva, colorimetric assay) # M1010-100-T
ExoPure™ Immunoplates (Overall Exosome Isolation, saliva, luminometric assay) # M1011-100-W
ExoPure™ Immunoplates (Overall Exosome Isolation, saliva, fluorimetric assay) # M1012-100-B
ExoPure™ Immunoplates (Overall Exosome Isolation, cell media, colorimetric assay) # M1013-100-T
ExoPure™ Immunoplates (Overall Exosome Isolation, cell media, luminometric assay) # M1014-100-W
ExoPure™ Immunoplates (Overall Exosome Isolation, cell media, fluorimetric assay) # M1015-100-B
TumorExoPure™ Immunoplates (Exosome Isolation, plasma, colorimetric assay) # M1016-100-T
TumorExoPure™ Immunoplates (Exosome Isolation, plasma, luminometric assay) # M1017-100-W
TumorExoPure™ Immunoplates (Exosome Isolation, plasma, fluorimetric assay) # M1018-100-B
NeuralExoPure™ Immunoplates (Exosome Isolation, plasma, colorimetric assay) # M1019-100-T
NeuralExoPure™ Immunoplates (Exosome Isolation, plasma, luminometric assay) # M1020-100-W
NeuralExoPure™ Immunoplates (Exosome Isolation, plasma, fluorimetric assay) # M1021-100-B
GlialExoPure™ Immunoplates (Exosome Isolation, plasma, colorimetric assay) # M1022-100-T
GlialExoPure™ Immunoplates (Exosome Isolation, plasma, luminometric assay) # M1023-100-W
GlialExoPure™ Immunoplates (Exosome Isolation, plasma, fluorimetric assay) # M1024-100-B
Monocytes/PlateletExoPure™ Immunoplates (Exosome Isolation, plasma, colorimetric assay) # M1025-100-T
Monocytes/PlateletExoPure™ Immunoplates (Exosome Isolation, plasma, luminometric assay) # M1026-100-W
Monocytes/PlateletExoPure™ Immunoplates (Exosome Isolation, plasma, fluorimetric assay) # M1027-100-B

AMSBIO | www.amsbio.com | info@amsbio.com

UK & Rest of the World
 184 Park Drive, Milton Park
 Abingdon OX14 4SE, UK
 T: +44 (0)1235 828 200
 F: +44 (0) 1235 820 482

North America
 1035 Cambridge Street,
 Cambridge, MA 02141
 T: +1 (617) 945-5033 or
 T: +1 (800) 987-0985
 F: +1 (617) 945-8218

Germany
 Bockenheimer Landstr. 17/19
 60325 Frankfurt/Main
 T: +49 (0) 69 779099
 F: +49 (0) 69 13376880

Switzerland
 Centro Nord-Sud 2E
 CH-6934 Bioggio-Lugano
 T: +41(0) 91 604 55 22
 F: +41(0) 91 605 17 85