

**Cat #:** EXOP-500A-1

**Description:** Purified Exosomes from Human Serum (Healthy Donors)

Our purified exosomes from pooled human biofluid samples come from healthy donors and include exosomes isolated from serum (Cat.# EXOP-500A-1), urine (Cat.# EXOP-520A-1), CSF (Cat.# EXOP-530A-1), and saliva (Cat.# EXOP-510A-1), with more biofluids on the way. Each lot of exosomes is carefully characterized for particle size and concentration by NanoSight™ analysis, and expression of specific exosome protein markers validated by Western blot.

Use these well-validated exosomes for a variety of applications, including:

- Protein biomarker analysis
- qPCR for RNA biomarkers
- High-throughput biomarker discovery (*g.* mass spec analysis)
- Electron microscopy
- Standardized controls for disease studies

Purified exosomes are stored in 1x PBS, and each unit contains 25 µg of exosomal protein. Lot-specific NanoSight and Western blot data are provided to ensure lot-to-lot quality and consistency. Each vial has enough material to run approximately 5 lanes in an SDS-PAGE gel (5 µg protein/lane).

AMSBIO | [www.amsbio.com](http://www.amsbio.com) | [info@amsbio.com](mailto:info@amsbio.com)

 **UK & Rest of the World**  
184 Park Drive, Milton Park  
Abingdon OX14 4SE, UK  
T: +44 (0)1235 828 200  
F: +44 (0) 1235 820 482

 **North America**  
1035 Cambridge Street,  
Cambridge, MA 02141  
T: +1 (617) 945-5033 or  
T: +1 (800) 987-0985  
F: +1 (617) 945-8218

 **Germany**  
Bockenheimer Landstr. 17/19  
60325 Frankfurt/Main  
T: +49 (0) 69 779099  
F: +49 (0) 69 13376880

 **Switzerland**  
Centro Nord-Sud 2E  
CH-6934 Bioggio-Lugano  
T: +41(0) 91 604 55 22  
F: +41(0) 91 605 17 85

## Supporting Data

Validated using Western blotting and NanoSight analysis

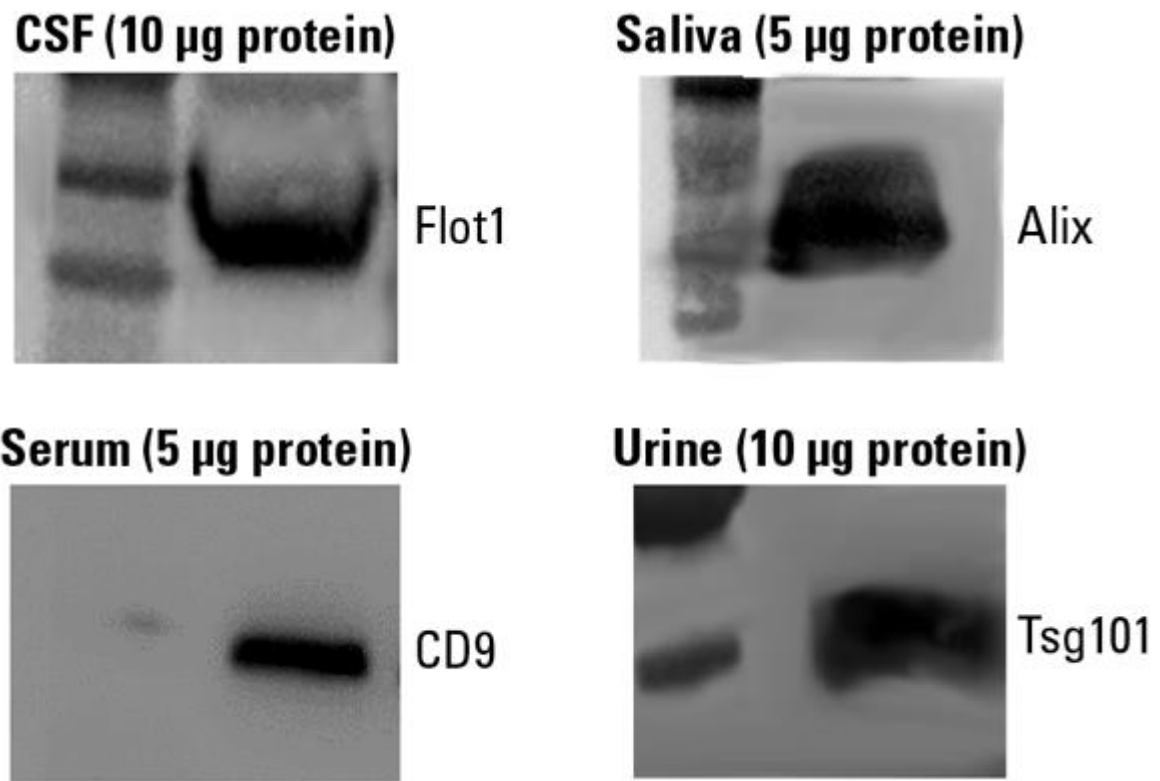


Figure 1. Biofluid Exosomes contain expected protein markers as shown via Western blot analysis. The amount of protein loaded on each gel is as indicated.

AMSBIO | [www.amsbio.com](http://www.amsbio.com) | [info@amsbio.com](mailto:info@amsbio.com)

 **UK & Rest of the World**  
184 Park Drive, Milton Park  
Abingdon OX14 4SE, UK  
T: +44 (0)1235 828 200  
F: +44 (0) 1235 820 482

 **North America**  
1035 Cambridge Street,  
Cambridge, MA 02141  
T: +1 (617) 945-5033 or  
T: +1 (800) 987-0985  
F: +1 (617) 945-8218

 **Germany**  
Bockenheimer Landstr. 17/19  
60325 Frankfurt/Main  
T: +49 (0) 69 779099  
F: +49 (0) 69 13376880

 **Switzerland**  
Centro Nord-Sud 2E  
CH-6934 Bioggio-Lugano  
T: +41(0) 91 604 55 22  
F: +41(0) 91 605 17 85

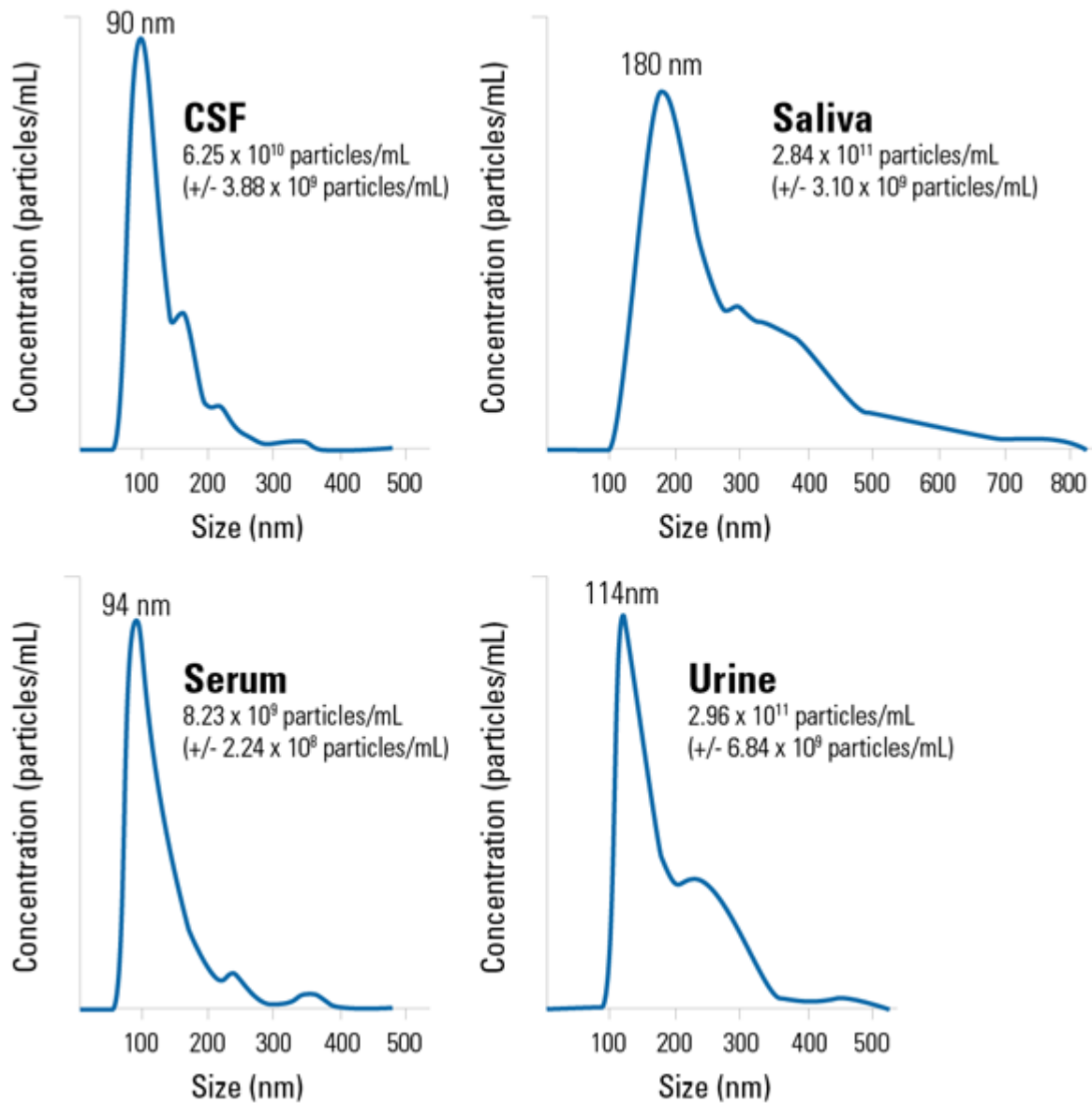


Figure 2. NanoSight analysis of Biofluid Exosomes show expected size distributions. Concentrations in particles/mL are shown, with the particle size mode reported on each plot.

AMSBIO | [www.amsbio.com](http://www.amsbio.com) | [info@amsbio.com](mailto:info@amsbio.com)

**UK & Rest of the World**  
 184 Park Drive, Milton Park  
 Abingdon OX14 4SE, UK  
 T: +44 (0)1235 828 200  
 F: +44 (0) 1235 820 482

**North America**  
 1035 Cambridge Street,  
 Cambridge, MA 02141  
 T: +1 (617) 945-5033 or  
 T: +1 (800) 987-0985  
 F: +1 (617) 945-8218

**Germany**  
 Bockenheimer Landstr. 17/19  
 60325 Frankfurt/Main  
 T: +49 (0) 69 779099  
 F: +49 (0) 69 13376880

**Switzerland**  
 Centro Nord-Sud 2E  
 CH-6934 Bioggio-Lugano  
 T: +41(0) 91 604 55 22  
 F: +41(0) 91 605 17 85