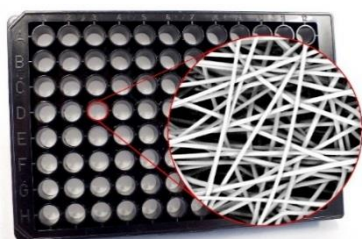




Mimetix[®] 96-well plate

AMS.TECL-002-1X AMS.TECL-002-8X



The Mimetix 96-well plate, our highly-consistent and easy-to-use 3D platform, holds great promise to reduce the number of costly drug failures in clinical trials, enabling more realistic tumour and toxicology models.

Product Description:

The Mimetix electrospun scaffold is incorporated into a standard 96-well plate frame using a proprietary laser-welding technology which provides minimal base distortion and avoids the use of glues. The base is 190µm polystyrene with excellent optical properties and high light transmission.

The scaffold is thick enough to provide the benefits of 3D cell morphology and behaviour yet thin enough to allow microscopic imaging.

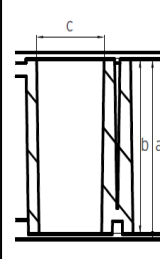
Features:

- True 3D environment rather than a roughened 2D surface
- Minimal protocol adaption required to switch from 2D to 3D
- Compatible with fluorescence microscopy
- Scaffolds can be coated with materials to facilitate cell adhesion in low serum conditions
- Protocols for cell seeding, retrieval, assays, and imaging are available

Scaffold Specifications:

- Material: medical-grade poly-L-lactide (PLLA)
- Orientation: Random, non-woven
- Thickness: 50 µm
- Fibre diameter: 4 µm (15-30 µm pores)
- Overall porosity: app. 80%
- Non-biodegradable in *in vitro* applications

Plate Specifications:

	Plate width:	127.76 ± 0.25 mm
	Plate depth:	85.48 ± 0.25 mm
	Plate height (a):	14.35 ± 0.25 mm
	Well depth (b):	10.8 ± 0.25 mm
	Well diameter (c):	6.3 ± 0.10 mm
	Distance to centre of A1 from top edge:	11.24 ± 0.25 mm
	Distance to centre of A1 from left edge:	14.38 ± 0.25 mm
	Pitch (distance between A1 and A2):	9.0 mm

- Supplied with a lid in individually -sealed plastic wrapping
- Treated with gamma or e-beam irradiation
- Store at room temperature in the dark
- Manufactured in the United Kingdom

AMSBIO | www.amsbio.com | info@amsbio.com



UK & Rest of the World
AMS Biotechnology (Europe) Ltd
184 Park Drive, Milton Park
Abingdon, UK
T: +44 (0)1235 828 200
F: +44 (0) 1235 820 482



North America
amsbio LLC
1035 Cambridge Street,
Cambridge, MA 02141
T: +1 (617) 945-5033 or
T: +1 (800) 987-0985
F: +1 (617) 945-8218



Germany
AMS Biotechnology (Europe) Ltd
Bockenheimer Landstr. 17/19
60325 Frankfurt/Main
T: +49 (0) 69 779099
F: +49 (0) 69 13376880



Switzerland
AMS Biotechnology (Europe) Ltd
Centro Nord-Sud 2E
CH-6934 Bioggio-Lugano
T: +41(0) 91 604 55 22
F: +41(0) 91 605 17 85



Mimetix[®] 96-well plate

Precondition

The Mimetix scaffold needs to be wetted with ethanol in order to allow a cell suspension to access the pores.

- Add 100 μ L 20% ethanol per well..
- Allow ethanol to soak into the membrane for 5 min, then aspirate ethanol carefully without touching the scaffold.

Wash

- Wash scaffold twice with PBS.
- Leave scaffold in cell culture medium until cell seeding.

Seed

These seeding densities are general guidelines only.

- Add 10,000 cells suspended in 100-200 μ L cell culture medium.

Exchange medium

- For long-term experiments semi-exchange the cell culture medium every 3 days.

AMSBIO | www.amsbio.com | info@amsbio.com



UK & Rest of the World
AMS Biotechnology (Europe) Ltd
184 Park Drive, Milton Park
Abingdon, UK
T: +44 (0)1235 828 200
F: +44 (0) 1235 820 482



North America
amsbio LLC
1035 Cambridge Street,
Cambridge, MA 02141
T: +1 (617) 945-5033 or
T: +1 (800) 987-0985
F: +1 (617) 945-8218



Germany
AMS Biotechnology (Europe) Ltd
Bockenheimer Landstr. 17/19
60325 Frankfurt/Main
T: +49 (0) 69 779099
F: +49 (0) 69 13376880



Switzerland
AMS Biotechnology (Europe) Ltd
Centro Nord-Sud 2E
CH-6934 Bioggio-Lugano
T: +41(0) 91 604 55 22
F: +41(0) 91 605 17 85