

Source

Anti-SARS-CoV-2 Spike S1 Antibody, Chimeric MAb (AMS.S1N-M13A1) is a chimeric monoclonal antibody combining the constant domains of the human IgG1 molecule with mouse variable regions. The variable region was obtained from a mouse immunized with purified recombinant SARS-CoV-2 Spike S1 Protein.

Isotype

Human IgG1/kappa

Specificity

This product binds SARS-CoV-2 Spike RBD as well as SARS-CoV Spike RBD. The cross-reactivity with other coronaviruses has not been tested yet.

Application

This antibody is developed for detecting the SARS-CoV-2 Spike Protein in cell supernatant or SARS-CoV-2 virus in vitro by sandwich ELISA assay.

Purity

>90% as determined by SDS-PAGE.

Formulation

Delivered as bulk protein in a 0.2 µm filtered solution of PBS, pH7.4.

Storage

For long term storage, the product should be stored in liquid state at 2-6°C upon receipt.

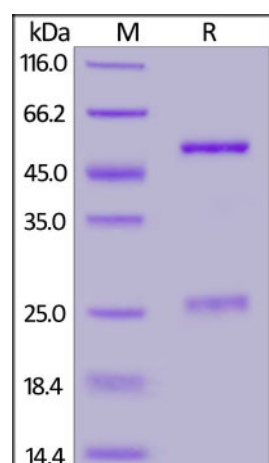
Please avoid repeated freeze-thaw cycles.

This product is stable after storage at:

- The product MUST be stored at 2-6°C upon receipt.
- The product is validated to be stable after storage at 4°C for 3 months under sterile conditions.

Shipping


This product is supplied and shipped as sterile liquid solution with blue ice, please inquire the shipping cost.

SDS-PAGE

Anti-SARS-CoV-2 Spike S1 Antibody, Chimeric mAb on SDS-PAGE under reducing (R) condition. The gel was stained overnight with Coomassie Blue. The purity of the protein is greater than 90%.

Bioactivity-ELISA

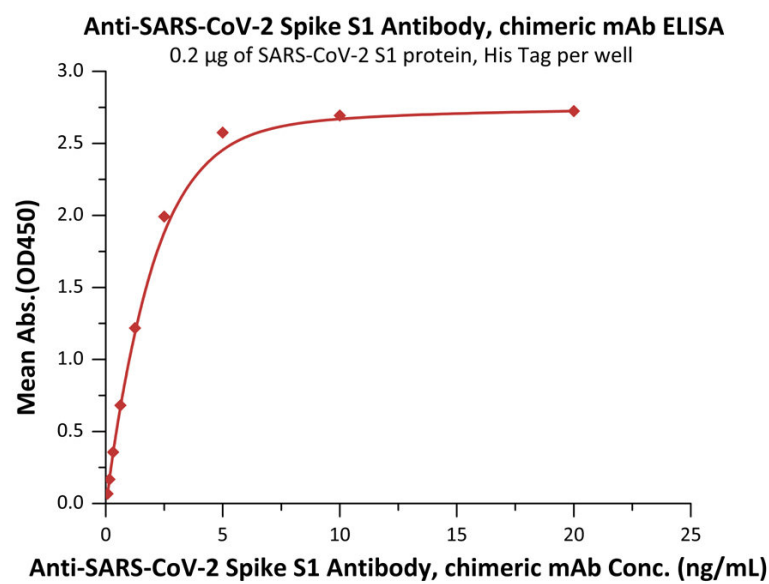
AMSBIO | www.amsbio.com | info@amsbio.com

 **UK & Rest of the World**
184 Park Drive, Milton Park
Abingdon OX14 4SE, U.K.
T: +44 (0) 1235 828 200
F: +44 (0) 1235 820 482

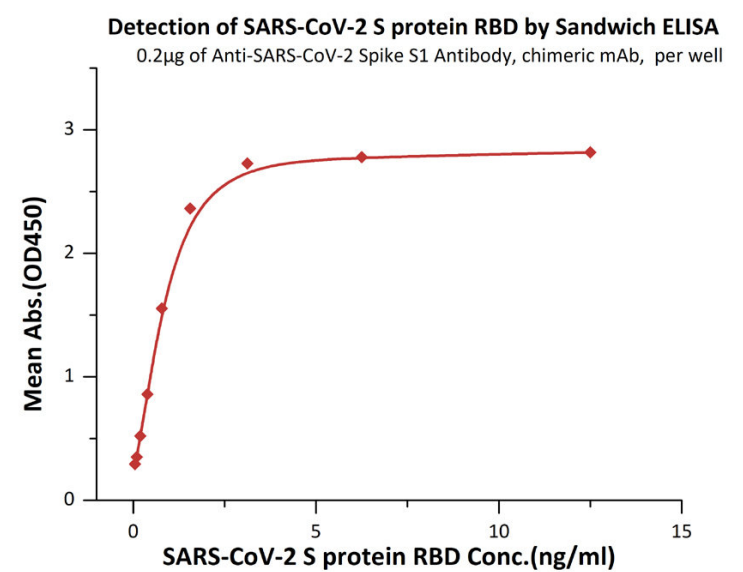
 **North America**
1035 Cambridge Street,
Cambridge, MA 02141.
T: +1 (617) 945-5033 or
T: +1 (800) 987-0985
F: +1 (617) 945-8218

 **Germany**
Bockenheimer Landstr. 17/19
60325 Frankfurt/Main
T: +49 (0) 69 779099
F: +49 (0) 69 13376880

 **Switzerland**
Via Lisano 3
(CP.683)
6900 Massagno
T: +41 (0) 91 604 55 22
F: +41 (0) 91 605 17 85



Immobilized SARS-CoV-2 S1 protein, His Tag (Cat. No. AMS.S1N-C52H2) at 2 µg/mL (100 µL/well) can bind Anti-SARS-CoV-2 Spike S1 Antibody, chimeric mAb (Cat. No. AMS.S1N-M13A1) with a linear range of 0.08-2.5 ng/mL (QC tested).




Detection SARS-CoV-2 S protein RBD by Sandwich ELISA Assay.

Immobilized Anti-SARS-CoV-2 Spike S1 Antibody, chimeric mAb (Cat. No. AMS.S1N-M12A1) at 2 µg/mL (100 µL/well) can bind S protein RBD. And then add Biotinylated Anti-SARS-CoV-2 Spike S1 Antibody (Cat. No. AMS.S1N-M13A1) at 1:5000. Detection was performed using HRP-conjugated streptavidin with sensitivity of 25 pg/mL (Routinely tested).

Background

It's been reported that Coronavirus can infect the human respiratory epithelial cells through interaction with the human ACE2 receptor. The spike protein is a large type I transmembrane protein containing two subunits, S1 and S2. S1 mainly contains a receptor binding domain (RBD), which is responsible for recognizing the cell surface receptor. S2 contains basic elements needed for the membrane fusion. The S protein plays key parts in the induction of neutralizing-antibody and T-cell responses, as well as protective immunity.

AMSBIO | www.amsbio.com | info@amsbio.com

 **UK & Rest of the World**
184 Park Drive, Milton Park
Abingdon OX14 4SE, U.K.
T: +44 (0) 1235 828 200
F: +44 (0) 1235 820 482

 **North America**
1035 Cambridge Street,
Cambridge, MA 02141.
T: +1 (617) 945-5033 or
T: +1 (800) 987-0985
F: +1 (617) 945-8218

 **Germany**
Bockenheimer Landstr. 17/19
60325 Frankfurt/Main
T: +49 (0) 69 779099
F: +49 (0) 69 13376880

 **Switzerland**
Via Lisano 3
(CP.683)
6900 Massagno
T: +41 (0) 91 604 55 22
F: +41 (0) 91 605 17 85