

**Source**

Anti-SARS-CoV-2 Spike RBD Antibody, Chimeric mAb, Human IgG1 (AM122) is a chimeric monoclonal antibody recombinantly expressed from HEK293 cells, which combines the variable region of a mouse monoclonal antibody with human IgG1 constant domain. The mouse monoclonal antibody was obtained from a mouse immunized with recombinant SARS-CoV-2 Spike S1 protein. *As verified in competitive ELISA-based and pseudovirus-based neutralization assay, this chimeric monoclonal can potently neutralize all SARS-CoV-2 Variants of Concern (VOCs), including Alpha (B.1.1.7), Beta (B.1.351), Gamma (P.1) and Delta (B.1.617.2).*

**Isotype**

Human IgG1/kappa

**Specificity**

This product is a specific antibody against SARS-CoV-2 Spike protein RBD domain. No cross-reactivity is detected with Spike protein RBD domain of other coronaviruses, including SARS-CoV, MERS-CoV, HCoV-229E, HCoV-NL63, HCoV-OC43 and HCoV-HKU1.

**Application**

This antibody can be paired with other Anti-SARS-CoV-2 Spike S1 antibodies to detect SARS-CoV-2 Spike S1 protein in sandwich ELISA or LFA assay.

**Purity**

>95% as determined by SDS-PAGE.

**Formulation**

Lyophilized from 0.22  $\mu$ m filtered solution in PBS, pH7.4 . Normally trehalose is added as protectant before lyophilization.

Contact us for customized product form or formulation.

**Reconstitution**

Please see Certificate of Analysis for specific instructions.

*For best performance, we strongly recommend you to follow the reconstitution protocol provided in the CoA.*

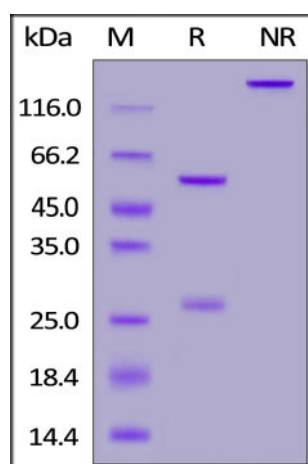
**Storage**

After reconstitution, this product is stable after storage at  $-20^{\circ}\text{C}$  or lower.

*Please avoid repeated freeze-thaw cycles.*

This product is stable after storage at:

- For long term storage, the product is stable for up to 3 years at  $-70^{\circ}\text{C}$  from date of receipt;
- For short term storage, the product is stable for up to 12 months at  $2-8^{\circ}\text{C}$  from date of receipt.

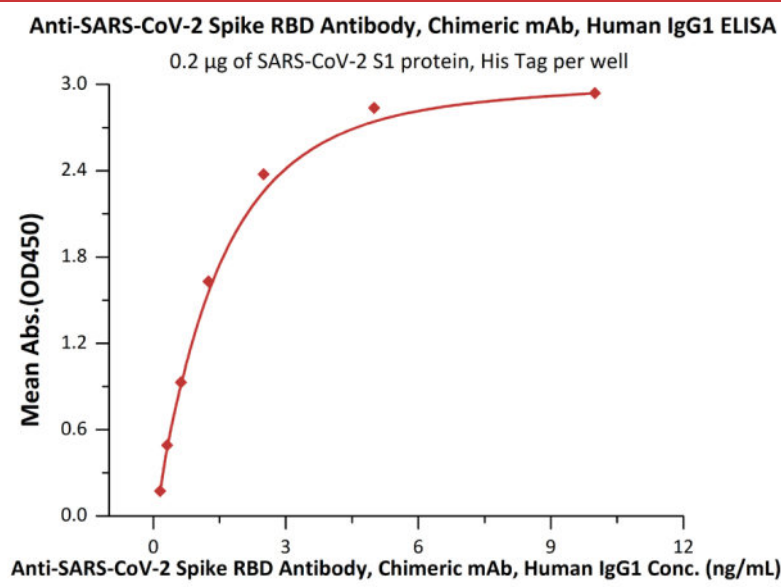
**SDS-PAGE**

Anti-SARS-CoV-2 Spike RBD Antibody, Chimeric mAb, Human IgG1 on SDS-PAGE under reducing (R) and non-reducing (NR) conditions. The gel was stained overnight with Coomassie Blue. The purity of the protein is greater than 95%.

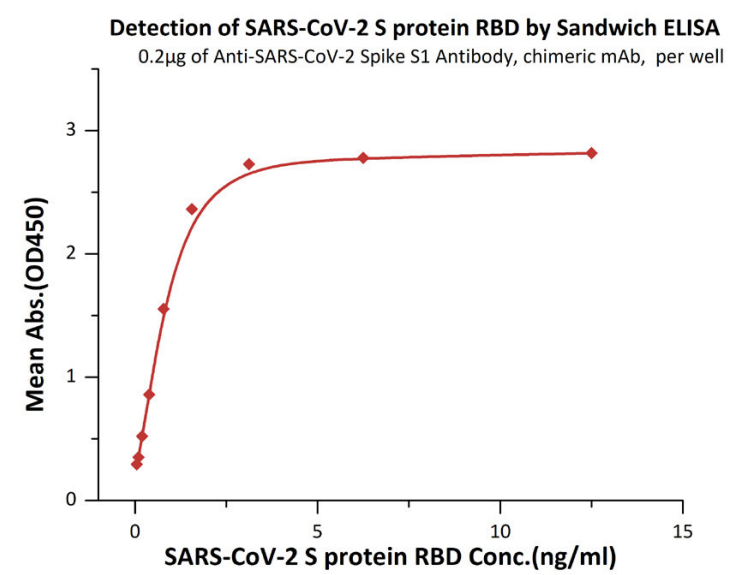
**Bioactivity-ELISA**

# Anti-SARS-CoV-2 Spike RBD Neutralizing Antibody, Chimeric mAb, Human IgG1 (AM122)

Catalog # AMS.S1N-M122

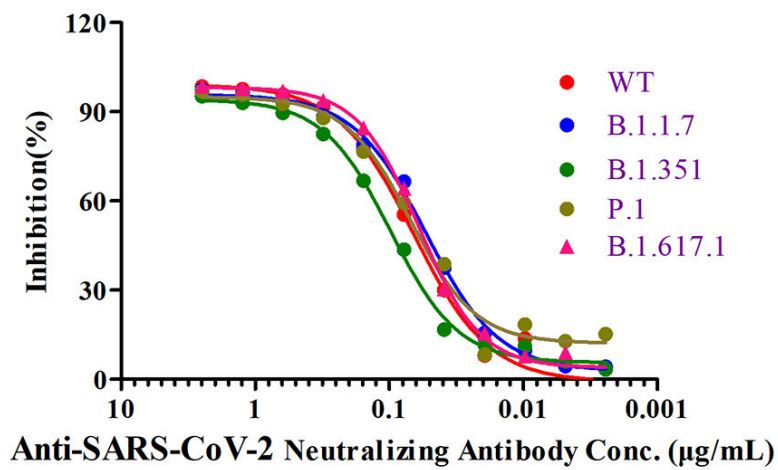


Immobilized SARS-CoV-2 S1 protein, His Tag (Cat. No. AMS.S1N-C52H2) at 2µg/mL (100 µL/well) can bind Anti-SARS-CoV-2 Spike RBD Antibody, Chimeric mAb, Human IgG1 (Cat. No. AMS.S1N-M122) with a linear range of 0.2-3 ng/mL (QC tested).



**Detection of SARS-CoV-2 S protein RBD by Sandwich ELISA Assay.** Immobilized Anti-SARS-CoV-2 Spike RBD Antibody, Chimeric mAb, Human IgG1 (Cat. No. AMS.S1N-M122) at 2 µg/mL (100 µL/well) can bind S protein RBD. And then add Anti-SARS-CoV-2 Spike RBD Antibody, Chimeric mAb, Human IgG1 (Cat. No. AMS.S1N-M130) at 1:5000. Detection was performed using HRP-conjugated streptavidin with sensitivity of 25 pg/mL (Routinely tested).

## Inhibition of SARS-CoV-2 Spike RBD:ACE2 Interaction by Anti-SARS-CoV-2 Neutralizing Antibody (Cat.No. S1N-M122)

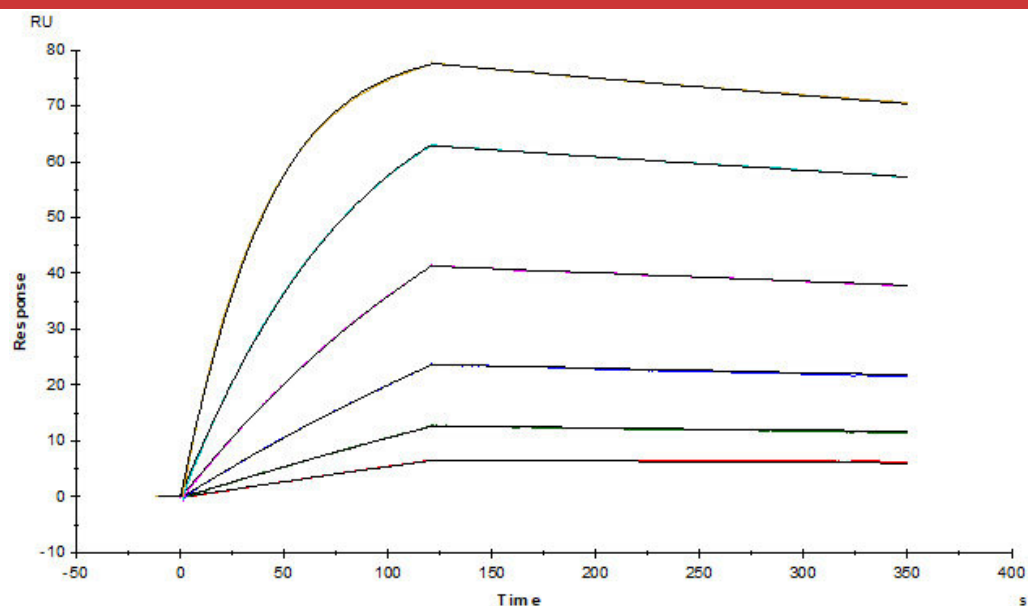


Anti-SARS-CoV-2 Spike RBD Neutralizing antibody (Cat.No. AMS.S1N-M122) neutralizes SARS-CoV-2 Spike RBD by inhibiting RBD:ACE2 interaction. The ACE2-coated plate is incubated with the wild type (WT) RBD or B.1.1.7, B.1.351, P.1, B.1.617.1, B.1.617.2 mutant and treated with the neutralizing antibody at increasing concentration. Percent inhibition is calculated based on the OD value.

## Bioactivity-SPR

# Anti-SARS-CoV-2 Spike RBD Neutralizing Antibody, Chimeric mAb, Human IgG1 (AM122)

Catalog # AMS.S1N-M122



Anti-SARS-CoV-2 Spike RBD Antibody, Chimeric mAb, Human IgG1 (Cat. No. AMS.S1N-M122) captured on CM5 chip via Anti-human IgG Fc antibodies surface can bind SARS-CoV-2 S protein RBD, His Tag (Cat. No. AMS.SPD-C52H3) with an affinity constant of 0.375 nM as determined in a SPR assay (BiacoreT200) (Routinely tested).

## Background

It's been reported that Coronavirus can infect the human respiratory epithelial cells through interaction with the human ACE2 receptor. The spike protein is a large type I transmembrane protein containing two subunits, S1 and S2. S1 mainly contains a receptor binding domain (RBD), which is responsible for recognizing the cell surface receptor. S2 contains basic elements needed for the membrane fusion. The S protein plays key parts in the induction of neutralizing-antibody and T-cell responses, as well as protective immunity.

## Clinical and Translational Updates

AMSBIO | [www.amsbio.com](http://www.amsbio.com) | [info@amsbio.com](mailto:info@amsbio.com)

 **UK & Rest of the World**  
184 Park Drive, Milton Park  
Abingdon OX14 4SE, U.K.  
T: +44 (0) 1235 828 200  
F: +44 (0) 1235 820 482

 **North America**  
1035 Cambridge Street,  
Cambridge, MA 02141.  
T: +1 (617) 945-5033 or  
T: +1 (800) 987-0985  
F: +1 (617) 945-8218

 **Germany**  
Bockenheimer Landstr. 17/19  
60325 Frankfurt/Main  
T: +49 (0) 69 779099  
F: +49 (0) 69 13376880

 **Switzerland**  
Via Lisano 3  
(CP.683)  
6900 Massagno  
T: +41 (0) 91 604 55 22  
F: +41 (0) 91 605 17 85