

Cat# **AMS.PM-CAR2001**

## CAR-T Cell Medium (Fetal Bovine Serum), 500 ml

CAR-T Cell Expansion Medium for expansion of CAR-T cells. The cells can be expanded > 100 fold using CAR-T medium.

Data:

T cells can be isolated from PBMC cells. T cells can be activated with CD28/CD3 beads (Figure 1) and expanded > 100 fold using CAR-T Cell Expansion Medium (FBS, fetal bovine serum) or human serum or used for flow cytometry or cytotoxicity assays (Figures 1, 2).

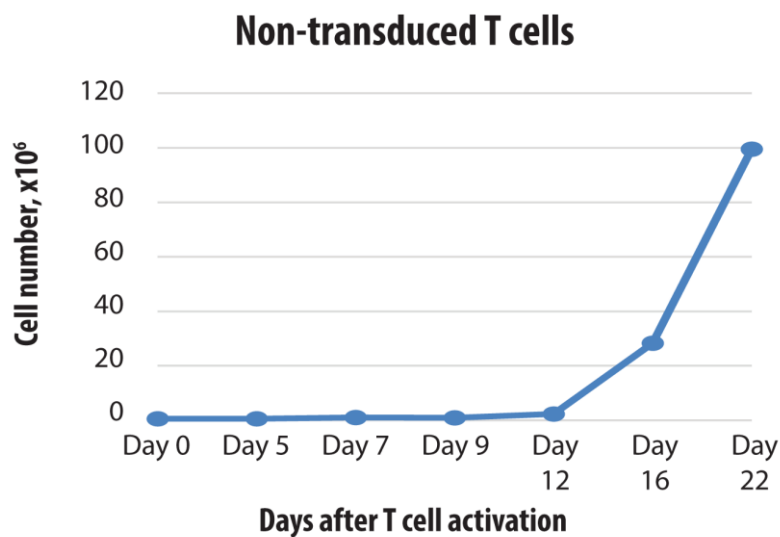


Figure 1. The growth curve of non-transduced T cells. Non-transduced T cells are activated and expanded more than 100-fold with CD28/CD3 beads and IL-2.

\*Note: healthy donor T cells were used. Human serum was used.

AMSBIO | [www.amsbio.com](http://www.amsbio.com) | [info@amsbio.com](mailto:info@amsbio.com)

 **UK & Rest of the World**  
184 Park Drive, Milton Park  
Abingdon OX14 4SE, UK  
T: +44 (0)1235 828 200  
F: +44 (0) 1235 820 482

 **North America**  
1035 Cambridge Street,  
Cambridge, MA 02141  
T: +1 (617) 945-5033 or  
T: +1 (800) 987-0985  
F: +1 (617) 945-8218

 **Germany**  
Bockenheimer Landstr. 17/19  
60325 Frankfurt/Main  
T: +49 (0) 69 779099  
F: +49 (0) 69 13376880

 **Switzerland**  
Centro Nord-Sud 2E  
CH-6934 Bioggio-Lugano  
T: +41(0) 91 604 55 22  
F: +41(0) 91 605 17 85

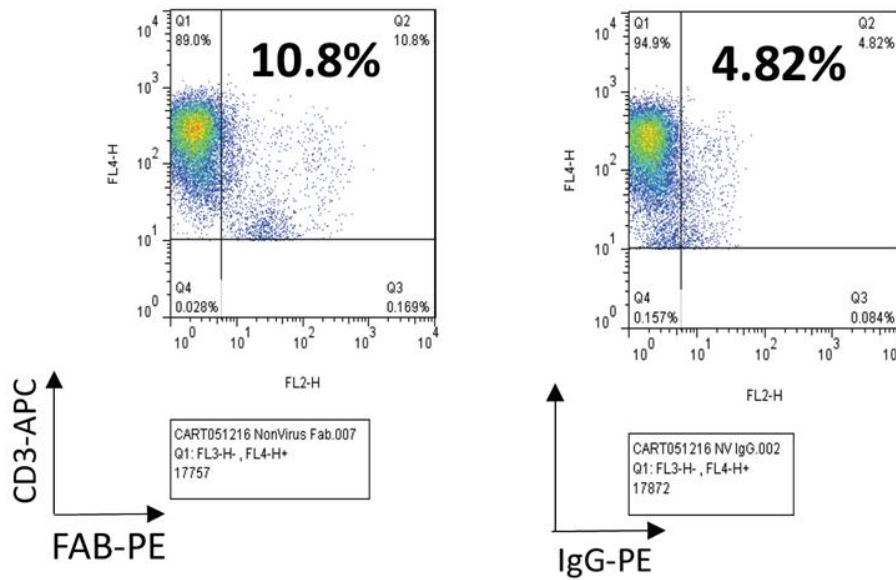


Figure 2. Non-transduced cells have background FAB staining versus > 60% CAR-T cells (not shown).

\*Note: Healthy donor T cells were used. Human serum was used.