

## Data Sheet

### PARP7, FLAG-tag

Human, recombinant, N-terminal FLAG-tag  
**Catalog #:** AMS.80527  
**Lot#:** 180911 **Conc.:** 0.4 mg/ml

**Formulated in:** 40 mM Tris-HCl, pH 8.0, 110 mM NaCl, 2.2 mM KCl, 0.04% Tween-20, 3 mM DTT, 20% Glycerol and 100 µg/mL FLAG peptide.

**Stability:** At least 6 months at -80°C. *Avoid freeze/thaw cycles. Storing diluted enzyme is not recommended, if necessary, use carrier protein (BSA 0.1 – 0.5%).*

**References:**

1. Rouleau M., et al. J Cell Biochem. 2007 Feb 1;100(2):385-401.
2. Augustin A., et al. J Cell Sci. 2003 Apr 15;116(Pt 8):1551-62.

**Description:**

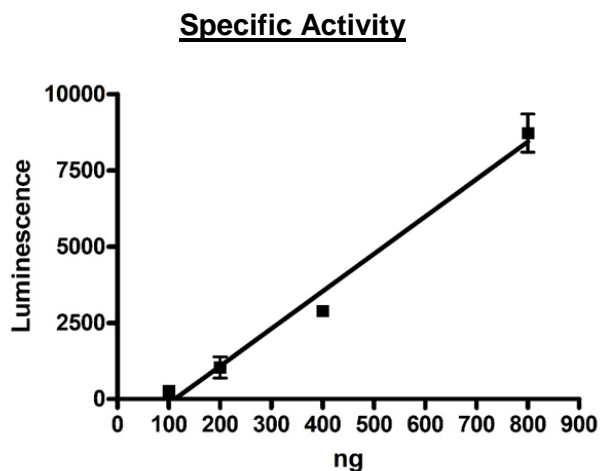
Human PARP7 (GenBank Accession No. NM\_015508), a.a. 400-657 (end) with N-terminal FLAG-tag, MW = 31 kDa, expressed in a Baculovirus infected Sf9 cell expression system.

**Specific Activity:** >40 pmol/min/µg  
**Assay Conditions:** Assay was done according to PARP7 assay kit protocol #80557.

**Application:**

Useful for the study of enzyme kinetics, screening inhibitors, and selectivity profiling.

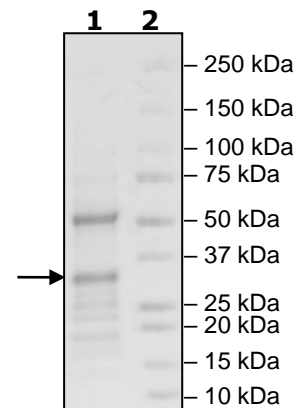
### Quality Assurance



**4-20% SDS-PAGE  
Coomassie staining**

**Lane 1:**  
2 µg PARP7  
**Lane 2:**  
Protein Marker

**MW:** 31 kDa  
**Purity:** ≥33%



OUR PRODUCTS ARE FOR RESEARCH USE ONLY. NOT FOR DIAGNOSTIC OR THERAPEUTIC USE.

AMS BIO | [www.amsbio.com](http://www.amsbio.com) | [info@amsbio.com](mailto:info@amsbio.com)

 **UK & Rest of the World**  
 184 Park Drive, Milton Park  
 Abingdon OX14 4SE, UK  
 T: +44 (0) 1235 828 200  
 F: +44 (0) 1235 820 482

 **North America**  
 1035 Cambridge Street,  
 Cambridge, MA 02141  
 T: +1 (617) 945-5033 or  
 T: +1 (800) 987-0985  
 F: +1 (617) 945-8218

 **Germany**  
 Bockenheimer Landstr. 17/19  
 60325 Frankfurt/Main  
 T: +49 (0) 69 779099  
 F: +49 (0) 69 13376880

 **Switzerland**  
 Centro Nord-Sud 2E  
 CH-6934 Bioggio-Lugano  
 T: +41(0) 91 604 55 22  
 F: +41(0) 91 605 17 85