

## Data Sheet

### PARP14

Human, recombinant, N-terminal His-GST tag  
**Catalog #:** AMS.80514  
**Lot#:** 130116      **Conc.:** 0.13 mg/ml

**Formulated in:** 40 mM Tris-HCl, pH 8.0,  
 110 mM NaCl, 2.2 mM KCl, 188 mM  
 imidazole, 0.04% Tween-20, 3 mM DTT,  
 20% glycerol.

**Stability:** >6 months at -80°C

**References:**

1. Barbarulo A. *et al. Oncogene. 10 (1038), 448 (2012).*
2. Cho SH. *et al. Proc Natl Acad Sci U S A. 108(38),15972-7 (2011).*

**Description:**

Human PARP14 (GenBank Accession No. NM\_017554), amino-acids 1470-1801end with N-terminal His-GST tag, MW = 66.5 kDa, expressed in a Baculovirus infected Sf9 cell expression system.

**Assay Conditions:**

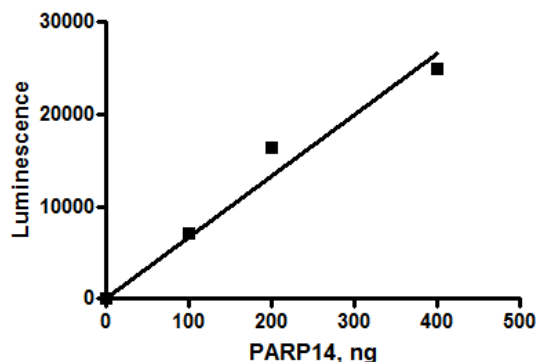
Enzyme reaction is conducted using PARP14 enzyme and BPS PARP assay kit reagents at various PARP assay mixture concentrations. Ribosylation reaction is conducted at room temperature for 1 hour, followed by chemiluminescent detection.

**Application:**

Useful for the study of enzyme kinetics, screening inhibitors, and selectivity profiling.

### Quality Assurance

**Specific Activity**

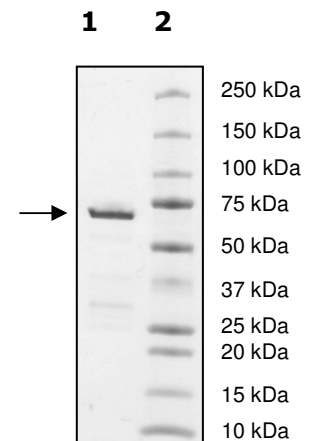


**4-20% SDS-PAGE  
Coomassie staining**

**Lane 1:**  
1 µg PARP14

**Lane 2:**  
Protein Marker

**MW:** 66.5 kDa  
**Purity:** ≥83%



AMSBIO | [www.amsbio.com](http://www.amsbio.com) | [info@amsbio.com](mailto:info@amsbio.com)

**UK & Rest of the World**  
 184 Park Drive, Milton Park  
 Abingdon OX14 4SE, UK  
 T: +44 (0)1235 828 200  
 F: +44 (0) 1235 820 482

**North America**  
 1035 Cambridge Street,  
 Cambridge, MA 02141  
 T: +1 (617) 945-5033 or  
 T: +1 (800) 987-0985  
 F: +1 (617) 945-8218

**Germany**  
 Bockenheimer Landstr. 17/19  
 60325 Frankfurt/Main  
 T: +49 (0) 69 779099  
 F: +49 (0) 69 13376880

**Switzerland**  
 Centro Nord-Sud 2E  
 CH-6934 Bioggio-Lugano  
 T: +41(0) 91 604 55 22  
 F: +41(0) 91 605 17 85



6044 Cornerstone Court W, Ste E  
San Diego, CA 92121  
**Tel:** 1.858.829.3082  
**Fax:** 1.858.481.8694  
**Email:** [info@bpsbioscience.com](mailto:info@bpsbioscience.com)

**PROTEIN SEQUENCE:**

MHHHHHHGGGSPILGYWKIKGLVQPTRLLEYLEEKYEEHLYERDEGDKWRNKKFELG  
LEFPNLPYYIDGDVKLTQSMAIIRYIADKHNMLGGCPKERAEISMLEGAVLDIRYGVSRIA  
YSKDFETLKVDFLSKLPEMLKMFKDRLCHKTYLNGDHVTHPDFMLYDALDVVLYMDPM  
CLDAFPKLVCFKKRIEAIQIDKYLKSSKYIAWPLQGQWQATFGGGDHPKSDPENLYFQ  
GGGEFKEYQELNELQKKLNINISLDHKRPLIKVLGISRDVMQARDEIEAMIKRVRLAKEQ  
ESRADCISEFIEWQYNDNNTSHCFNKMTNLKLEDARREKKKTVDVKINHRHYTVNLNTY  
TATDTKGHSLSVQRLTKSKVDIPAHWSDMKQQNFCVVELLPDPEYNTVASKFNQTCS  
HFRIEKIERIQNPDWNSYQAKKKTMDAKNGQTMNEKQLFHGTDAGSVPHVNRNGFN  
RSYAGKNAVAYGKGTYFAVNANYSANDTYSRPDANGRKHVYYVRLTGIYTHGNHSLI  
VPPSKNPQNPTDLYDVTVDNVHHPSLFVAFYDYQAYPEYLITFRK

OUR PRODUCTS ARE FOR RESEARCH USE ONLY. NOT FOR DIAGNOSTIC OR THERAPEUTIC USE.

To place your order, please contact us by Phone **1.858.829.3082** Fax **1.858.481.8694**  
Or you can Email us at: [info@bpsbioscience.com](mailto:info@bpsbioscience.com)  
Please visit our website at: [www.bpsbioscience.com](http://www.bpsbioscience.com)