

**Data Sheet**  
**SHP-2 Activating Peptide**  
**(IRS1\_pY1172(dPEG8)pY1222)**  
**Catalog # AMS.79319-2**

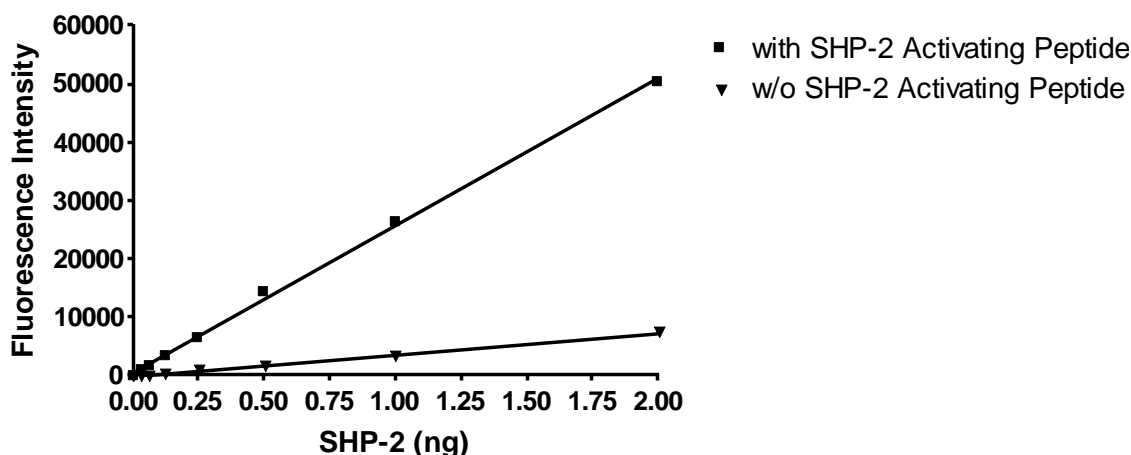
**Background:** It has been shown that the bisphosphorylated insulin receptor substrate 1 (IRS-1) binds to the (N)-SH2 domain of SHP-2 (PTPN11) resulting in activation of the SHP2 enzymatic activity.

**Description:** IRS1\_pY1172(dPEG8)pY1222(SEQ: H2N-LN(pY)IDLDLV(dPEG8)LST(pY)-ASINFQK-amide)

**Purity:** >95% (by HPLC)

**Size:** 100 µl

**SHP-2 Full Length Activity**



SHP2 activation assay was performed as described in the SHP2(Full length) Assay Kit (BPS cat#79330)

**Solubility/Stability:** Soluble in DMSO. Store at -80°C.

**Reference:** Chen Y-N et. al., *Nature*, 535(7610):148-152 (2016)

**RELATED PRODUCTS:**

<u>Product Name</u>	<u>Catalog #</u>	<u>Size</u>
SHP-2 (PTPN11), GST-tag	30022	20 µg
SHP-1(PTPN6), GST-tag	30021	20 µg
Insulin receptor (INSR), GST-tag	40241	10 µg
Homogeneous SHP-2 Assay Kit	79330	96 rxns

OUR PRODUCTS ARE FOR RESEARCH USE ONLY. NOT FOR DIAGNOSTIC OR THERAPEUTIC USE.

AMSBIO | [www.amsbio.com](http://www.amsbio.com) | [info@amsbio.com](mailto:info@amsbio.com)

 **UK & Rest of the World**  
 184 Park Drive, Milton Park  
 Abingdon OX14 4SE, UK  
 T: +44 (0)1235 828 200  
 F: +44 (0) 1235 820 482

 **North America**  
 1035 Cambridge Street,  
 Cambridge, MA 02141  
 T: +1 (617) 945-5033 or  
 T: +1 (800) 987-0985  
 F: +1 (617) 945-8218

 **Germany**  
 Bockenheimer Landstr. 17/19  
 60325 Frankfurt/Main  
 T: +49 (0) 69 779099  
 F: +49 (0) 69 13376880

 **Switzerland**  
 Centro Nord-Sud 2E  
 CH-6934 Bioggio-Lugano  
 T: +41(0) 91 604 55 22  
 F: +41(0) 91 605 17 85