

Data Sheet

MLL1/WDR5/Ash2L/ RbBP5 Complex

Human, recombinant
Catalog #: AMS.51022
Lot #: 120906 **Conc.:** 0.24 mg/ml

Formulated in: 50 mM Tris-HCl, pH 7.4, 300 mM NaCl, 250 mM imidazole, 1 mM TCEP, 1 μ M ZnCl₂, and 10% glycerol.

Stability: >6 months at -80°C. Avoid freeze/thaw cycles. Storing diluted enzyme is not recommended, if necessary, use carrier protein (BSA 0.1 – 0.5%).

References:

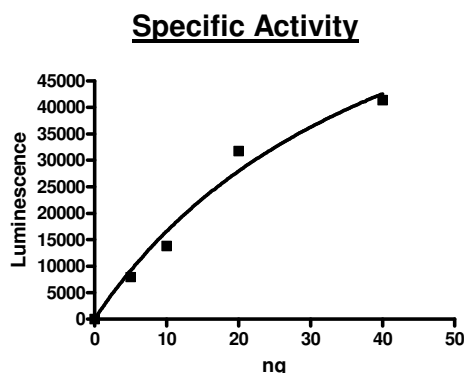
1. Patel, A., *et al.*, *J. Biol. Chem.* 2009; **284(36)**: 24242-24256.
2. Mohan, M., *et al.*, *Nat. Rev. Cancer* 2010; **10(10)**: 721-728.

Description: MLL1/WAR complex of human **MLL1** (GenBank Accession No. NM_005933) a.a. 3745-end with N-terminal His-tag and MW= 27 kDa, human **Ash2L** (GenBank Accession No. NM_001105214), a.a. 2-end with N-terminal His-tag and MW= 61 kDa, and human **RbBP5** (GenBank Accession No. NM_005057), a.a. 2-end with N-terminal His-tag and MW= 60 kDa individually expressed in an *E. coli* expression system, and human **WDR5** (GenBank Accession No. NM_017588), a.a. 2-end with N-terminal His-tag and MW= 37.4 kDa expressed in a baculovirus Sf9 expression system.

Assay Conditions: 50 μ l reaction mix (50 mM Tris, pH 8.8, 5 mM MgCl₂, 4 M DTT, 20 μ M S-adenosylmethionine, and 5-50 ng MLL complex) add to the wells coated with the substrate. Incubate at room temperature for 1 hr. Add antibody against methylated K4 residue of histone H3, incubate 1 hr. Then, incubate 30 minutes with the secondary HRP-labeled antibody. Finally, add HRP chemiluminescent substrate and read luminescence.

Application: Useful for the study of enzyme kinetics, screening inhibitors, and selectivity profiling.

Quality Assurance



4-20% SDS-PAGE Coomassie Staining

Lane 1:

MLL1/WAR Complex

Lane 2:

Protein Marker

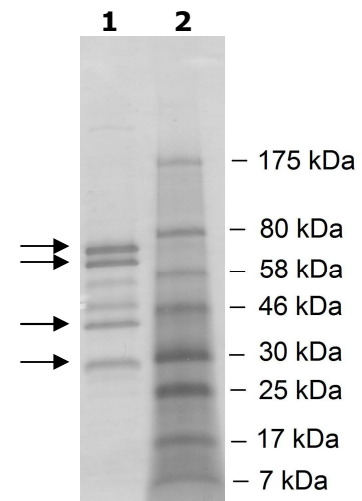
Purity: \geq 82%

MW: RbBP5: 60 kDa

Ash2L: 61 kDa

WDR5: 37 kDa

MLL1: 27 kDa



AMSBIO | www.amsbio.com | info@amsbio.com

UK & Rest of the World
 184 Park Drive, Milton Park
 Abingdon, UK
 T: +44 (0)1235 828 200
 F: +44 (0) 1235 820 482

North America
 1035 Cambridge Street,
 Cambridge, MA 02141
 T: +1 617 945 5033 or
 T: +1 800 987 0985
 F: +1 617 945 8218

Germany
 Bockenheimer Landstr. 17/19
 60325 Frankfurt/Main
 T: +49 (0) 69 779099
 F: +49 (0) 69 13376880

Switzerland
 Centro Nord-Sud 2E
 CH-6934 Bioggio-Lugano
 T: +41(0) 91 604 55 22
 F: +41(0) 91 605 17 85

Protein Sequences:MLL1

MHHHHHHFRFHKPEEANEPLNPHGSARAEVHLRKSADFDMFNFLASKHRQPPEYNP
 NDEEEEEEVQLKSARRATSMDLPMPMRFRHLKKTSSKEAVGVYRSPHGRGLFCKRNID
 AGEMVIEYAGNVIRSIQTDKREKYYDSKGIGCYMFRIDDSEVVDATMHGNAARFINHS
 CEPNCYSRVINIDGQKHIVIFAMRKIYRGEELTYDYKFPIEDASNKLPCNCGAKKCRKF
 LN

WDR5

MHHHHHHATEEKKPETEAARAQTPSSSATQSKPTPVKPNYALKFTLAGHTKAVSSV
 KFSPNGEWLASSSADKLIKWGAYDGKFEKTISGHKLGISDVAWSSDSNLLVSASDDK
 TLKIWDVSSGKCLKTLKGHSNYVFCCNFNPQSNLIVSGSFDESVRIVDVKTKGKCLKTL
 PAHSDPVSAVHFNRDGLIVSSSYDGLCRIWDTASGQCLKTLIDDDNPPVSFVKFSPN
 GKYILAAATLDNTLKLWDYSKGKCLKTYTGHKNEKYCIFANFSVTGGKWIVSGSEDNLV
 YIWNLQTKIEVQKLQGHDTVIVISTACHPTENIIASAALENDKTIKLWKSDC

Ash2L

MHHHHHHDTQAGSVDEENGRQLGEVELQCGICTKWFTADTFGIDTSSCLPFMTNYSF
 HCNVCHHSGNTYFLRKQANLKEMCLSALANLTWQSRTQDEHPKTMFSKDKDIIPFID
 KYWECMTTRQRPVKMTWPNIVKTMSKERDVLVKEHPDPGSKDPEEDYPKFGLLD
 QDLSNIGPAYDNQKQSSAVSTSGNLNGGIAAGSSGKGRGAKRKQQDGGTTGTTKKA
 RSDPLFSAQRLPPHGYPLEHPFNKDGRYRILAEPDPHAPDPEKLELDCWAGKPIPGD
 LYRACL YERVLLALHDRAPQLKISDDRLTVVGEKGYSMVRASHGVRKGAWYFEITVD
 EMPDDTAARLGWSQPLGNLQAPLGYDKFSYSWRSKKGTKFHQSIGKHYSSGYGGG
 DVLGFYINLPEDTETAKSLPDTYKDKALIKFKSYLYFEEKDFVDKAEKSLKQTPHSEIIF
 YKNGVNQGVAYKDIFEGVYFPAISLYKSCVTSINFGPCFKYPPKDLTYRPMSDMGWG
 AVVEHTLADVLYHVETEVDGRRSPPEP

RbBP5

MHHHHHHNLELLESFGQNYPEEADGTLDCISMALCTCFNRWGTL LAVGCNDGRIVW
 DFLTRGIAKII SAHIHPVCSLCWSRDGHKLVASASTDNIVSQWDVLSGDCDQRFRFPSP
 LKVQYHPRDQNKVLVCPMKSAPVMLTSDSKHVVLVDDSDLNVVASFDRRGEYIY
 TGNAGKILVLKTDSDQLVASFRVTTGTSNTTAIKSIEFARKGSCFLINTADRIIRVYDG
 REILTCGRDGEPEPMQKLQDLVNRTPWKKCCFSGDGEYIVAGSARQHALYIWEKSIG
 NLVKILHGTRGELLLDVAWHPVRPIIASISSGVVSIWAQNQVENWSAFAPDFKELDEN
 VEYEEERESEFDIEDEDKSEPEQTGADAAEDEVDVTSVDPIAAFCSSEDELEDKALL
 YLPIAPEVEDPEENPYGPPDAVQTSMLDEGASSEKQRQSSADGSQPPKKPKTTNI
 ELQGVPNDEVHPLLGVKGDGKSKKKQAGRPKSGKKEKDSPPFKPKLYKGDRGLPL
 EGSAGKGVQAELSQPLTAGGAISELL

