

## Data Sheet

### ASH1L (2433-2548)

Human, recombinant, N-terminal His-tag

**Catalog #:**AMS.31147

Lot #: 130708-G1      Conc.: 0.18 mg/ml

**Formulated in:** 40 mM Tris-HCl pH 8, 110 mM NaCl, 2.2 mM KCl, 0.04% Tween-20, and 20% glycerol.

**Stability:** >6 months at  $-80^{\circ}\text{C}$ . Avoid freeze/thaw cycles.

#### References:

1. Muller, S., *et al.*, *Expert Rev. Mol. Med.* 2011;**13**:1-21.
2. An, S., *et al.*, *J. Biol Chem.* 2011;**286**(10):8369-8374.

#### Description:

Human bromodomain ash1 (absent, small or homeotic)-like (ASH1L), also known as, KMT2H, ASH1-Like Protein, Ash1, huASH1 and EC 2.1.1.43, GenBank Accession No. NM\_018489, a.a. 2433 - 2548, with N-terminal His-tag, MW = 14.2 kDa, expressed in an *E. coli* expression system.

#### Application:

Useful for the study of bromodomain binding assays, screening inhibitors, and selectivity profiling.

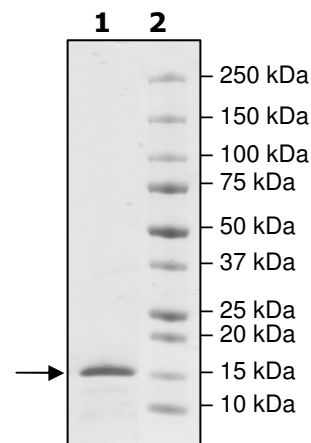
## Quality Assurance

### 4-20% SDS-PAGE Coomassie staining

Lane 1:  
2.7  $\mu\text{g}$  ASH1L

Lane 2:  
Protein Marker

MW: 14.2 kDa  
Purity:  $\geq 90\%$



#### Sequence:

**MHHHHHH**EVARAARLAQIFKEICDGIISYKDSRQALAAPLLNLPKKNADYYEKISD  
PLDLITIEKQILTGYKTVFAFDADMLKVFRNAEKYYGRKSPVGRDVCRLRKAYYNAR  
HEASAQ

OUR PRODUCTS ARE FOR RESEARCH USE ONLY. NOT FOR DIAGNOSTIC OR THERAPEUTIC USE.

AMSBIO | [www.amsbio.com](http://www.amsbio.com) | [info@amsbio.com](mailto:info@amsbio.com)

 **UK & Rest of the World**  
184 Park Drive, Milton Park  
Abingdon OX14 4SE, UK  
T: +44 (0)1235 828 200  
F: +44 (0) 1235 820 482

 **North America**  
1035 Cambridge Street,  
Cambridge, MA 02141  
T: +1 (617) 945-5033 or  
T: +1 (800) 987-0985  
F: +1 (617) 945-8218

 **Germany**  
Bockenheimer Landstr. 17/19  
60325 Frankfurt/Main  
T: +49 (0) 69 779099  
F: +49 (0) 69 13376880

 **Switzerland**  
Centro Nord-Sud 2E  
CH-6934 Bioggio-Lugano  
T: +41(0) 91 604 55 22  
F: +41(0) 91 605 17 85