

## Data Sheet

### PLPro, His-tag (SARS-CoV-2)

SARS-CoV-2, Recombinant,  
N-terminal His-tag

**Catalog #:** AMS.100735

**Lot #:** 200519-1

**Conc:** 0.73 mg/ml

**Formulated in:** 40 mM Tris-HCl, pH 8, 110 mM NaCl, 2.2mM KCl, 0.04% Tween-20, 3 mM DTT, 20% glycerol and 115 mM Imidazole.

**Stability:** At least 6 months at -80°C. *Avoid freeze/thaw cycles.*

**References:**

1. Ma-Lauer, Y., *et al.*, *PNAS*, 2016 Aug; **113(35)**: E5192-E5201.
2. Mukherjee, S. D., *et al.*, *Eu. PMC*. 2020 May; **DOI**: 10.21203/rs.3.rs-27134/v1.

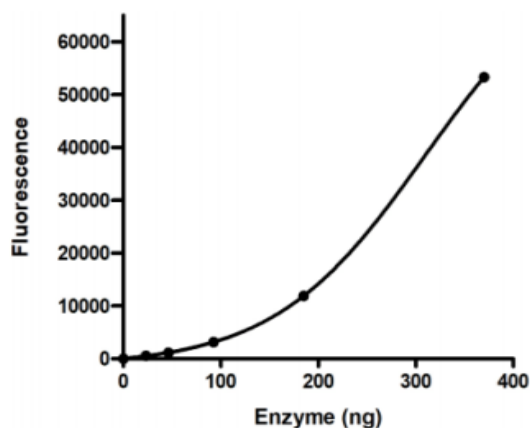
**Description:** Severe acute respiratory Coronavirus 2 Papain-Like Protease (PLPro), also known as PLP, GenBank Accession No. QHD43415, a.a. 1564-1882, with N-terminal His-tag, expressed in an *E. coli* expression system, MW=37 kDa.

**Assay conditions:** Add 30 µl of protease and 10 µl of compound diluted in 1x assay buffer. Incubate 30 min at 37°C. Start the reaction by adding 10 µl of diluted substrate. Immediately place plate in plate reader. Read kinetics for 60-120 min ( $\lambda_{exc}$ =360 nm,  $\lambda_{em}$ =460 nm). Final concentration of DMSO is 1%. Total volume is 50 µl.

**Applications:** Useful for studying protein binding and screening small molecules.

### Quality Assurance

**PLPro (SARS-CoV-2) Activity**

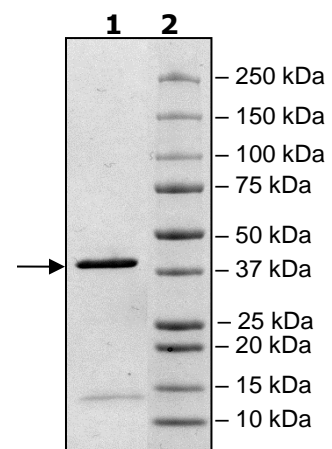


**4-20% SDS-PAGE  
Coomassie staining**

**Lane 1:**  
2µg PLpro  
**Lane 2:**  
Protein Marker

**MW:** 37 kDa

**Purity:** 88%



OUR PRODUCTS ARE FOR RESEARCH USE ONLY. NOT FOR DIAGNOSTIC OR THERAPEUTIC USE.

AMSBIO | [www.amsbio.com](http://www.amsbio.com) | [info@amsbio.com](mailto:info@amsbio.com)

 **UK & Rest of the World**  
184 Park Drive, Milton Park  
Abingdon OX14 4SE, UK  
T: +44 (0)1235 828 200  
F: +44 (0) 1235 820 482

 **North America**  
1035 Cambridge Street,  
Cambridge, MA 02141  
T: +1 (617) 945-5033 or  
T: +1 (800) 987-0985  
F: +1 (617) 945-8218

 **Germany**  
Bockenheimer Landstr. 17/19  
60325 Frankfurt/Main  
T: +49 (0) 69 779099  
F: +49 (0) 69 13376880

 **Switzerland**  
Centro Nord-Sud 2E  
CH-6934 Bioggio-Lugano  
T: +41(0) 91 604 55 22  
F: +41(0) 91 605 17 85