

Anti-SARS-CoV-2 Antibody (Clone# 6F10)

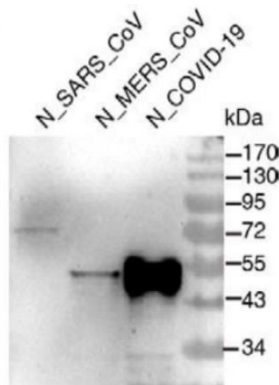
02/20

CATALOG NO.: A2060-50 (50 µg)

BACKGROUND DESCRIPTION: Coronaviruses (CoV) are a large group of enveloped positive-sense RNA viruses. They belong to subfamily *Coronavirinae*, in the family of *Coronaviridae*, of the order of *Nidovirales*. The Coronavirus genome is about 30 kb in length and encodes four structural proteins, namely, spike (S), envelope (E), membrane (M) and nucleocapsid (N), multiple non-structural proteins and other accessory proteins. Coronaviruses infect humans as well as a number of mammalian and avian species. Of the six Coronaviruses that infect humans, SARS-CoV and MERS-CoV cause severe respiratory disease in humans. SARS-CoV-2 is a novel strain of Coronavirus, deadlier than SARS and MERS-CoV and researchers are aiming to identify anti-viral targets and develop drugs and vaccines to inhibit replication of SARS-CoV-2.

ANTIBODY TYPE:	Monoclonal
CLONE:	6F10
HOST/ISOTYPE:	Mouse / IgG
IMMUNOGEN:	Synthetic peptide targeting amino acids 300-400 of SARS-CoV-2 nucleoprotein
MOLECULAR WEIGHT:	50 kDa
PURIFICATION:	Purified from ascites by Protein G column, > 95% based on SDS-PAGE
FORM:	Frozen Liquid
FORMULATION:	In 0.01 M Tris-HCl, pH 8.0, 0.15 M NaCl, 0.02% sodium azide
STORAGE CONDITIONS:	Store at -20°C; Store at -20°C. Product is stable for 6 weeks at 2 - 8°C as undiluted liquid. Prepare fresh dilutions for every new experiment. Avoid freeze / thaw cycles
APPLICATIONS AND USAGE:	WB 0.1-1 µg/ml, Indirect ELISA 0.2-2 µg/ml as detecting antibody, Sandwich ELISA 2 µg/ml, IHC (not recommended without antigen retrieval)

This information is only intended as a guide. The optimal dilutions must be determined by the user



Western blot analysis of purified recombinant Nucleoproteins from SARS, MERS and SARS-CoV-2 using Anti-SARS-CoV-2 Antibody (Clone# 6F10). Primary antibody concentration used was 0.1-1 µg/ml.

RELATED PRODUCTS:

HA (Influenza A Virus Hemagglutinin) Antibody (3924)
 Anti-Flavivirus group antigen Antibody (A1147)
 Anti-HIV/p24 Antibody (1D4) (A1020)
 Anti-RSV (Felvizumab), Human IgG1 Antibody (A1446)

FOR RESEARCH USE ONLY! Not to be used on humans.

AMSBIO | www.amsbio.com | info@amsbio.com

 **UK & Rest of the World**
 184 Park Drive, Milton Park
 Abingdon OX14 4SE, UK
 T: +44 (0) 1235 828 200
 F: +44 (0) 1235 820 482

 **North America**
 1035 Cambridge Street,
 Cambridge, MA 02141
 T: +1 (617) 945-5033 or
 T: +1 (800) 987-0985
 F: +1 (617) 945-8218

 **Germany**
 Bockenheimer Landstr. 17/19
 60325 Frankfurt/Main
 T: +49 (0) 69 779099
 F: +49 (0) 69 13376880

 **Switzerland**
 Centro Nord-Sud 2E
 CH-6934 Bioggio-Lugano
 T: +41(0) 91 604 55 22
 F: +41(0) 91 605 17 85