

Anti-human CD9 Antibody

ALTERNATE NAMES: CD9; DRAP-27 (Diphtheria Toxin Receptor-associated Protein)

CATALOG NO.: A1500-50

AMOUNT: 50 µg

HOST: Mouse

ISOTYPE: Mouse IgG1

CLONALITY: Mouse Monoclonal Unconjugated

IMMUNOGEN: Pre-B cell line NALM-6

PURIFICATION: >95%, purified from tissue culture supernatant or ascites by protein A affinity chromatography.

MOLECULAR WEIGHT: 24 kDa

FORM: Liquid

FORMULATION: 1 mg/ml in phosphate buffered saline (PBS) with sodium azide (15 mM), Approx. pH: 7.4.

SPECIES REACTIVITY: Human

STORAGE CONDITIONS: Store undiluted at 4°C. DO NOT FREEZE! Do not use after expiration date stamped on vial label.

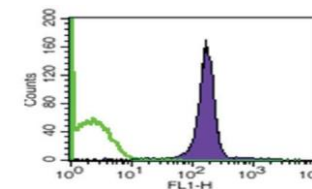
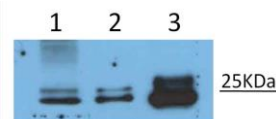
DESCRIPTION: Anti-CD9 recognizes a human 24-kiloDalton (kDa) single-chain cell-surface glycoprotein (p24) belonging to the tetraspanin family which transverse the membrane four times. The CD9 antigen has a very broad tissue distribution. It is present on basophils, eosinophils, monocytes, pre-B cells, B cells, and various leukemic cell lines (erythroid, myeloid, some T-lymphoid, pre-B-lymphoid). It is also found on follicular center cells, sinus histiocytes, macrophages, Kupffer cells, osteoclasts, hepatocytes, bile duct endothelium, renal glomeruli, proximal and distal tubuli, epithelia (intercellular spinous spaces) of skin and mucosa, fibroblasts, connective tissue, endothelium, smooth muscle, cardiac muscle, synovial lining cells, brain white matter, peripheral nerves and human keratin. In addition to being a co-stimulatory molecule, CD9 antigen activates platelets and

induces mitogenesis and kinase activity and is involved in cell migration, cell adhesion, and integrin signaling.

SPECIFICITY: WB (1:1000), ELISA (1:500), FACS (1:200)

APPLICATIONS: Western Blot (WB) (using non-reducing conditions)
Enzyme-Linked Immunosorbent Assay (ELISA)
Fluorescent-Activated Cell Sorting (FACS)

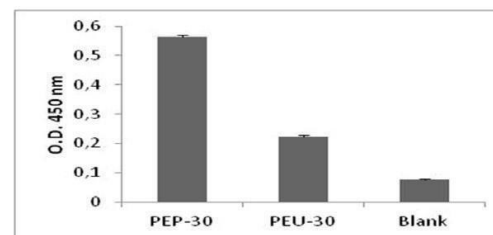
Note: This information is only intended as a guide. The optimal dilutions must be determined by the user.



Detection of CD9 by Western Blot.

- 1- MM1 (melanoma cell) lysate (20 µg)
- 2- Purified exosomes from MM1 cells (20 µg)
- 3- Plasma healthy donors purified exosomes (20 µg)

Detection of CD9 by FACS. CD9 staining of human plasma purified exosomes.



Detection of CD9 by ELISA. CD9 detection in purified exosomes from human plasma (PEP) and urine (PEU), 30 µg.

RELATED PRODUCTS:

- CD9 Biotin conjugated antibody (Cat. No. 1501-50)
- Other exosome specific antibodies (Cat. No. 1500-50 to Cat. No. 1515-50)

FOR RESEARCH USE ONLY! Not to be used on humans.

AMS BIO | www.amsbio.com | info@amsbio.com

UK & Rest of the World
184 Park Drive, Milton Park
Abingdon, UK
T: +44 (0) 1235 828 200
F: +44 (0) 1235 820 482

North America
1035 Cambridge Street,
Cambridge, MA 02141
T: +1 (617) 945-5033 or
T: +1 (800) 987-0985
F: +1 (617) 945-8218

Germany
Bockenheimer Landstr. 17/19
60325 Frankfurt/Main
T: +49 (0) 69 7790999
F: +49 (0) 69 13376880

Switzerland
Centro Nord-Sud 2E
CH-6934 Bioggio-Lugano
T: +41(0) 91 604 55 22
F: +41(0) 91 605 17 85