

Data Sheet

Human Notch1 Pathway Reporter Kit

Catalog # 79503

Background

The Notch signaling pathway controls cell fate decisions in vertebrate and invertebrate tissues. NOTCH signaling is triggered through the binding of a transmembrane ligand to Notch transmembrane receptor (NOTCH1/ NOTCH2/NOTCH3/NOTCH4) on a neighboring cell. This results in proteolytic cleavage of the NOTCH receptor, releasing the constitutively active intracellular domain of NOTCH (NICD). NICD translocates to the nucleus and associates with transcription factors CSL (CBF1/RBPJk/Suppressor of Hairless/Lag-1) and coactivator Mastermind to turn on the transcription of Notch-responsive genes.

Description

Notch Pathway Reporter kit is designed for monitoring the activity of the Notch signaling pathway in cultured cells. The kit contains a transfection-ready expression vector for Human NOTCH1 that has a deletion of the entire extracellular domain, leaving the transmembrane and intracellular domains intact (Notch1 Δ E). Inside the cells, the NOTCH1 Δ E is cleaved by γ -secretase and active NOTCH1 NICD is released into the nucleus. The kit also contains CSL (CBF1/RBP-J κ) luciferase reporter vector, which is a Notch pathway-responsive reporter. This reporter contains the firefly luciferase gene under the control of multimerized CSL responsive elements upstream of a minimal promoter. The CSL (CBF1/RBP-J κ) reporter is premixed with constitutively expressing *Renilla* (sea pansy) luciferase vector, which serves as an internal positive control for transfection efficiency.

The kit also includes a non-inducible firefly luciferase vector premixed with constitutively-expressing *Renilla* luciferase vector as a negative control. The non-inducible luciferase vector contains a firefly luciferase gene under the control of a minimal promoter, but without any additional response elements. The negative control is critical for determining pathway specific effects and background luciferase activity.

This kit contains the expression vector for Human Notch1 Δ E. We also offer the Mouse Notch1 Δ E expression vector (#60509), as well as a Mouse Notch1 NICD expression vector, which is constitutively active without processing by γ -secretase (#79504).

Application

- Monitor Notch signaling pathway activity.
- Screen activators or inhibitors of Notch signaling pathway.
- Study effects of RNAi or gene overexpression on the activity of Notch pathway.

OUR PRODUCTS ARE FOR RESEARCH USE ONLY. NOT FOR DIAGNOSTIC OR THERAPEUTIC USE.

AMSBIO | www.amsbio.com | info@amsbio.com

UK & Rest of the World 
184 Park Drive, Milton Park
Abingdon OX14 4SE.
T: +44 (0) 1235 828 200
F: +44 (0) 1235 820 482

North America 
1035 Cambridge Street,
Cambridge, MA 02141.
T: +1 (617) 945-5033 or
T: +1 (800) 987-0985
F: +1 (617) 945-8218

Europe 
Berenkoog 41,
1822 BH Alkmaar,
Netherlands
T: +31 (0) 72 8080244
F: +31 (0) 72 8080142

Switzerland 
Via Lisano 3,
(CP.683)
CH-6900
T: +41 (0) 91 604 55 22
F: +41 (0) 91 605 17 85

Germany 
Bockenheimer Landstr. 17/19
60325 Frankfurt/Main
T: +49 (0) 69 779099
F: +49 (0) 69 13376880

Components

Component	Specification	Amount	Storage
Reporter (Component A)	CSL (CBF1/RBP-Jκ) luciferase reporter vector + constitutively expressing <i>Renilla</i> luciferase vector	500 µL (60 ng DNA/ µL)	-20°C
Negative Control Reporter (Component B)	Non-inducible luciferase vector + constitutively expressing <i>Renilla</i> luciferase vector	500 µL (60 ng DNA/ µL)	-20°C
Notch1ΔE (Component C)	Expression vector for transmembrane and intracellular domain of Human Notch1 (Notch1ΔE)	250 µL (100 ng DNA/µL)	-20°C
Negative Control Expression vector (Component D)	Empty expression vector without Notch1	250 µL (100 ng DNA/µL)	-20°C

Note: These vectors are useful for transient transfection. They are NOT SUITABLE for transformation and amplification in bacteria.

Materials Required but Not Supplied

- Mammalian cell line and appropriate cell culture medium
- Medium 1 (#79259) or use MEM medium (Hyclone #SH30024.01) supplemented with 10% FBS (Invitrogen #26140-079), 1% non-essential amino acids (Hyclone #SH30238.01), 1 mM Na pyruvate (Hyclone #SH30239.01), 1% Penicillin/Streptomycin (Hyclone #SV30010.01)
- 96-well tissue culture plate or 96-well tissue culture treated white clear-bottom assay plate (Corning #3610)
- Transfection reagent for mammalian cell line [We use Lipofectamine™ 2000 (Invitrogen # 11668027). However, other transfection reagents should work equally well.]
- Opti-MEM I Reduced Serum Medium (Invitrogen #31985-062)
- Dual Luciferase Assay System:
Dual Luciferase (Firefly-Renilla) Assay System (#60683): This system assays cells directly in growth medium (Medium 1). It can be used with any luminometer. Automated injectors are not required.
- Luminometer

OUR PRODUCTS ARE FOR RESEARCH USE ONLY. NOT FOR DIAGNOSTIC OR THERAPEUTIC USE.

AMSBIO | www.amsbio.com | info@amsbio.com

UK & Rest of the World 
184 Park Drive, Milton Park
Abingdon OX14 4SE.
T: +44 (0) 1235 828 200
F: +44 (0) 1235 820 482

North America 
1035 Cambridge Street,
Cambridge, MA 02141.
T: +1 (617) 945-5033 or
T: +1 (800) 987-0985
F: +1 (617) 945-8218

Europe 
Berenkoog 41,
1822 BH Alkmaar,
Netherlands
T: +31 (0)72 8080244
F: +31 (0)72 8080142

Switzerland 
Via Lisano 3,
(CP.683)
CH-6900
T: +41 (0) 91 604 55 22
F: +41 (0) 91 605 17 85

Germany 
Bockenheimer Landstr. 17/19
60325 Frankfurt/Main
T: +49 (0) 69 779099
F: +49 (0) 69 13376880

Generalized Transfection and Assay Protocols

The following procedure is designed to transfect the reporter into HEK293 cells using Lipofectamine 2000 in a 96-well format. To transfect cells in different tissue culture formats, adjust the amounts of reagents and cell number in proportion to the relative surface area. If using a transfection reagent other than Lipofectamine 2000, follow the manufacturer's transfection protocol. Transfection conditions should be optimized according to the cell type and study requirements.

All amounts and volumes in the following setup are given on a per well basis.

1. One day before transfection, seed cells at a density of ~ 30,000 cells per well in 100 μ L of Medium 1 so that cells will be 90% confluent at the time of transfection.
2. Next day, for each well, prepare complexes as follows:
 - a. Dilute DNA mixtures in 15 μ L of Opti-MEM I medium (antibiotic-free). Mix gently. Depending upon the experimental design, the DNA mixtures may be any of the following combinations:
 - 1 μ L of **Reporter** (component A); in this experiment, the control transfection is 1 μ L of **Negative Control Reporter** (component B).
 - 1 μ L of **Reporter** (component A) + 0.5 μ L **experimental vector** expressing gene of interest (such as component C); in this experiment, the control transfections are: 1 μ L of **Reporter** (component A) + 0.5 μ L **negative control expression vector** (such as component D), 1 μ L of **Negative Control Reporter** (component B) + 0.5 μ L **experimental vector** expressing gene of interest, and 1 μ L of **Negative Control Reporter** (component B) + 0.5 μ L **negative control expression vector**.
 - 1 μ L of **Reporter** (component A) + **specific siRNA**; in this experiment, the control transfections are: 1 μ L of **Reporter** (component A) + **negative control siRNA**, 1 μ L of **Negative Control Reporter** (component B) + **specific siRNA**, and 1 μ L of **Negative Control Reporter** (component B) + **negative control siRNA**.
 - b. Mix Lipofectamine 2000 gently before use, then dilute 0.35 μ L of Lipofectamine 2000 in 15 μ L of Opti-MEM I medium (antibiotic-free). Incubate for 5 minutes at room temperature.

Note: we recommend setting up each condition in at least triplicate, and prepare transfection cocktail for multiple wells.

Note: Prepare this dilution cocktail in volumes sufficient for the whole experiment.

- b. After the 5-minute incubation, combine the diluted DNA with diluted Lipofectamine 2000. Mix gently and incubate for 25 minutes at room temperature.

OUR PRODUCTS ARE FOR RESEARCH USE ONLY. NOT FOR DIAGNOSTIC OR THERAPEUTIC USE.

AMSBIO | www.amsbio.com | info@amsbio.com

UK & Rest of the World 
184 Park Drive, Milton Park
Abingdon OX14 4SE.
T: +44 (0) 1235 828 200
F: +44 (0) 1235 820 482

North America 
1035 Cambridge Street,
Cambridge, MA 02141.
T: +1 (617) 945-5033 or
T: +1 (800) 987-0985
F: +1 (617) 945-8218

Europe 
Berenkoog 41,
1822 BH Alkmaar,
Netherlands
T: +31 (0) 72 8080244
F: +31 (0) 72 8080142

Switzerland 
Via Lisano 3,
(CP.683)
CH-6900
T: +41 (0) 91 604 55 22
F: +41 (0) 91 605 17 85

Germany 
Bockenheimer Landstr. 17/19
60325 Frankfurt/Main
T: +49 (0) 69 779099
F: +49 (0) 69 13376880

3. Add the 30 μ L of complexes to each well containing cells and medium. Mix gently by tapping the plate.
4. Incubate cells at 37°C in a CO₂ incubator. After ~24 hours of transfection, change medium to fresh Medium 1. ~48 hours after transfection, perform the Dual Luciferase Assay System following the protocol on the data sheet (#60683).

To study the effect of activators / inhibitors on the Notch pathway, treat the cells with tested activator/inhibitor after ~6 hours or 24 hours of transfection. Perform dual luciferase assay ~48 hours after transfection.

Sample protocol to determine the effect of NOTCH 1 on the CSL (CBF1/RBP-J κ) reporter in HEK293 cells

1. One day before transfection, seed HEK293 cells at a density of 30,000 cells per well into white clear-bottom 96-well plate in 100 μ L of Medium 1 (#79259). Incubate cells at 37°C in a CO₂ incubator overnight.
2. Next day, transfect 1 μ L of CSL (CBF1/RBP-J κ) luciferase reporter (component A) with 0.5 μ L of Notch1 Δ E (component C) or negative control expression vector (component D) into cells following the procedure in **Generalized Transfection and Assay Protocols**.
3. After ~24 hours of transfection, change medium to 50 μ L of fresh Medium 1. Add 50 μ L of Medium 1 to cell-free control wells (for determining background luminescence).
4. After ~48 hours of transfection, perform dual luciferase assay using Dual Luciferase (Firefly-Renilla) Assay System (#60683): Dilute 100x Firefly Luciferase Reagent Substrate (Component B) into Firefly Luciferase Reagent Buffer (Component A). Add 50 μ L of Firefly Luciferase reagent per well and rock at room temperature for ~15 minutes, then measure firefly luminescence using a luminometer. Dilute 100x Renilla Luciferase Reagent Substrate (Component D) into Renilla Luciferase Reagent Buffer (Component C). Add 50 μ L of Renilla Luciferase reagent per well, rock at room temperature for ~1 minute and measure Renilla luminescence.
5. To obtain the normalized luciferase activity for CSL (CBF1/RBP-J κ) reporter, subtract background luminescence, then calculate the ratio of firefly luminescence from CSL (CBF1/RBP-J κ) reporter to *Renilla* luminescence from the control *Renilla* luciferase vector.

OUR PRODUCTS ARE FOR RESEARCH USE ONLY. NOT FOR DIAGNOSTIC OR THERAPEUTIC USE.

AMSBIO | www.amsbio.com | info@amsbio.com

UK & Rest of the World 
184 Park Drive, Milton Park
Abingdon OX14 4SE.
T: +44 (0) 1235 828 200
F: +44 (0) 1235 820 482

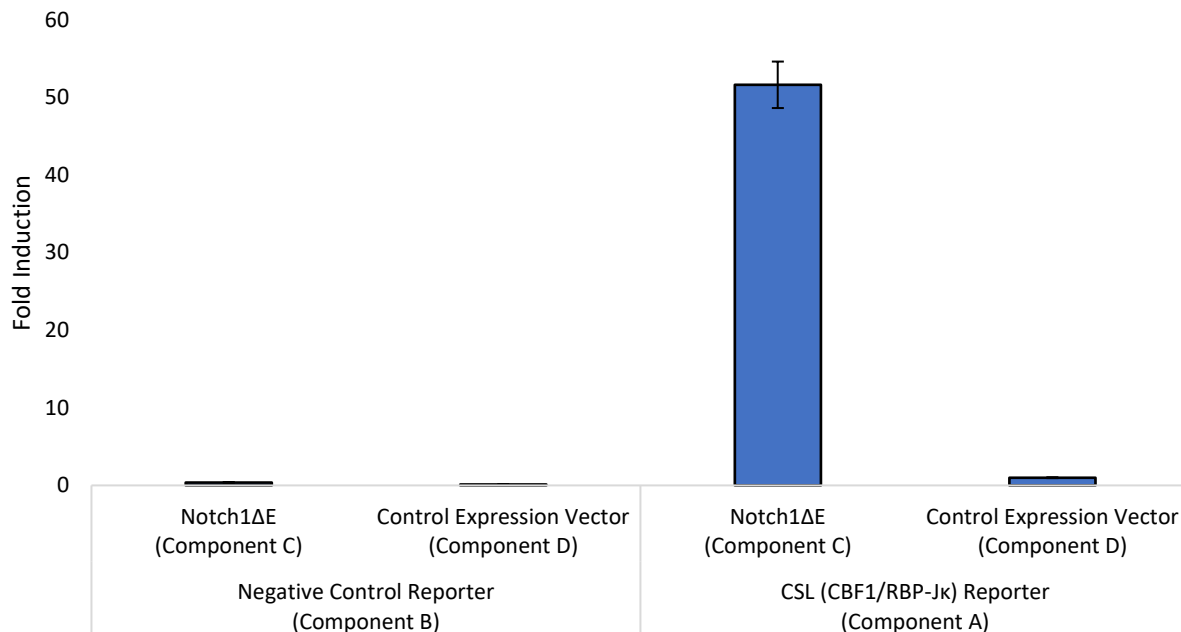
North America 
1035 Cambridge Street,
Cambridge, MA 02141.
T: +1 (617) 945-5033 or
T: +1 (800) 987-0985
F: +1 (617) 945-8218

Europe 
Berenkoog 41,
1822 BH Alkmaar,
Netherlands
T: +31 (0) 72 8080244
F: +31 (0) 72 8080142

Switzerland 
Via Lisano 3,
(CP.683)
CH-6900
T: +41 (0) 91 604 55 22
F: +41 (0) 91 605 17 85

Germany 
Bockenheimer Landstr. 17/19
60325 Frankfurt/Main
T: +49 (0) 69 779099
F: +49 (0) 69 13376880

Figure 1. Notch1ΔE induced the expression of CSL (CBF1/RBP-Jκ) reporter. The results are shown as fold induction of CSL (CBF1/RBP-Jκ) luciferase reporter activity.



Sample protocol to determine the effect of antagonists of Notch signaling pathway on Notch1ΔE-induced CSL (CBF1/RBP-Jκ) reporter activity in HEK293 cells:

1. One day before transfection, seed HEK293 cells at a density of 30,000 cells in 100 μ L of Medium 1 into each well of a white clear-bottom 96-well plate. Incubate cells at 37°C in a CO₂ incubator overnight.
2. Next day, transfect 1 μ L of CSL (CBF1/RBP-Jκ) luciferase reporter (component A) with 0.5 μ L of Notch1ΔE (component C) into cells following the procedure in **Generalized Transfection and Assay Protocols**.
3. After ~24 hours of transfection, treat transfected cells with the Notch pathway inhibitor DAPT (γ -secretase inhibitor) in 50 μ L of fresh Medium 1. Add 50 μ L of Medium 1 to cell-free control wells (for determining background luminescence). Set up each treatment in at least triplicate. Incubate cells at 37°C in a CO₂ incubator for ~24 hours.

OUR PRODUCTS ARE FOR RESEARCH USE ONLY. NOT FOR DIAGNOSTIC OR THERAPEUTIC USE.

AMSBIO | www.amsbio.com | info@amsbio.com

UK & Rest of the World
184 Park Drive, Milton Park
Abingdon OX14 4SE.
T: +44 (0) 1235 828 200
F: +44 (0) 1235 820 482

North America
1035 Cambridge Street,
Cambridge, MA 02141.
T: +1 (617) 945-5033 or
T: +1 (800) 987-0985
F: +1 (617) 945-8218

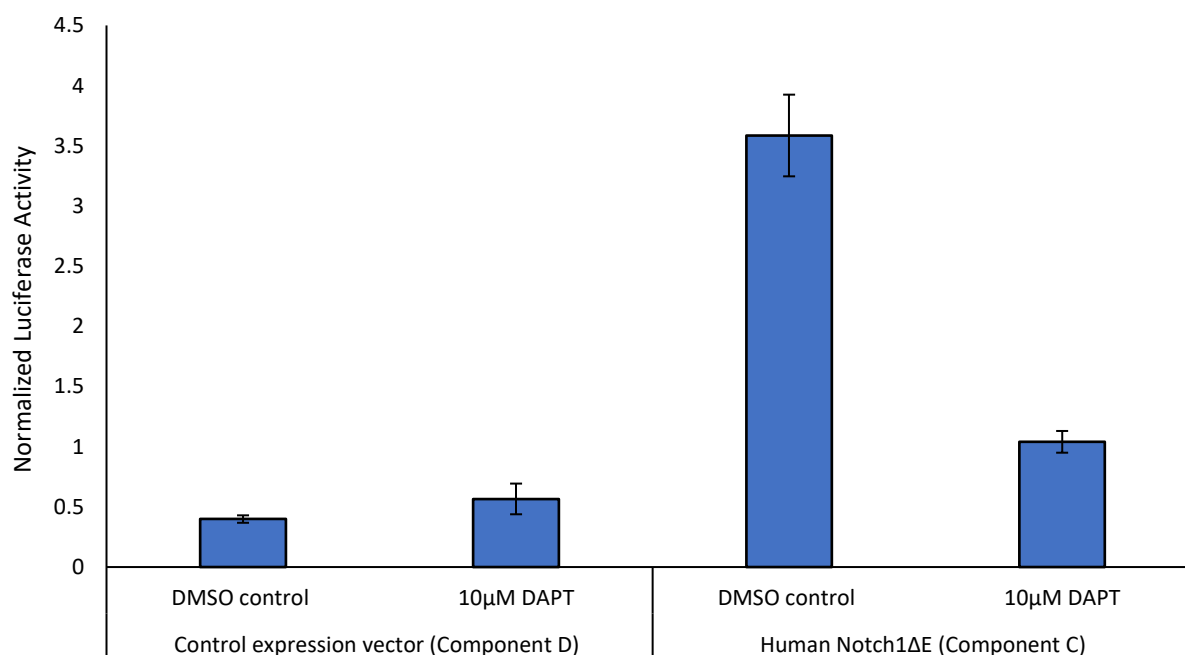
Europe
Berenkoog 41,
1822 BH Alkmaar,
Netherlands
T: +31 (0) 72 8080244
F: +31 (0) 72 8080142

Switzerland
Via Lisano 3,
(CP.683)
CH-6900
T: +41 (0) 91 604 55 22
F: +41 (0) 91 605 17 85

Germany
Bockenheimer Landstr. 17/19
60325 Frankfurt/Main
T: +49 (0) 69 779099
F: +49 (0) 69 13376880

4. After ~48 hours of transfection, perform dual luciferase assay using Dual Luciferase (Firefly-Renilla) Assay System (#60683): Dilute 100x Firefly Luciferase Reagent Substrate (Component B) into Firefly Luciferase Reagent Buffer (Component A). Add 50 μ l of Firefly Luciferase reagent per well and rock at room temperature for ~15 minutes, then measure firefly luminescence using a luminometer. Dilute 100x Renilla Luciferase Reagent Substrate (Component D) into Renilla Luciferase Reagent Buffer (Component C). Add 50 μ l of Renilla Luciferase reagent per well, rock at room temperature for ~1 minute and measure Renilla luminescence.
5. To obtain the normalized luciferase activity for CSL (CBF1/RBP-J κ) reporter, subtract background luminescence, then calculate the ratio of firefly luminescence from CSL (CBF1/RBP-J κ) reporter to *Renilla* luminescence from the control *Renilla* luciferase vector.

Figure 2. Inhibition of Notch1 Δ E-induced CSL (CBF1/RBP-J κ) reporter activity by Notch pathway inhibitor, DAPT (γ -secretase inhibitor).



OUR PRODUCTS ARE FOR RESEARCH USE ONLY. NOT FOR DIAGNOSTIC OR THERAPEUTIC USE.

AMSBIO | www.amsbio.com | info@amsbio.com

UK & Rest of the World 
184 Park Drive, Milton Park
Abingdon OX14 4SE.
T: +44 (0) 1235 828 200
F: +44 (0) 1235 820 482

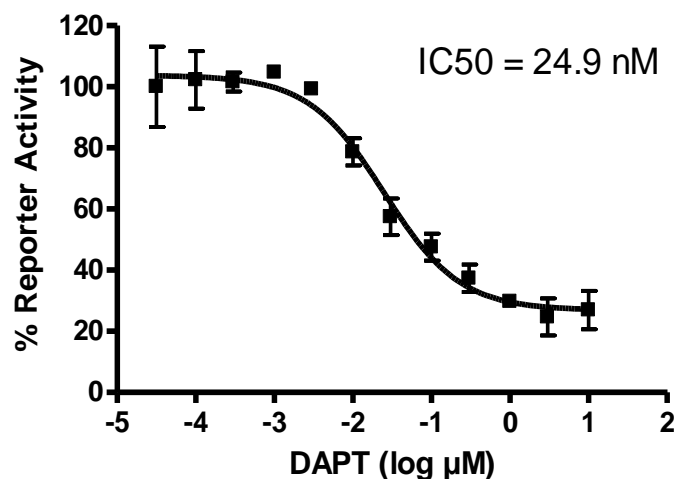
North America 
1035 Cambridge Street,
Cambridge, MA 02141.
T: +1 (617) 945-5033 or
T: +1 (800) 987-0985
F: +1 (617) 945-8218

Europe 
Berenkoog 41,
1822 BH Alkmaar,
Netherlands
T: +31 (0) 72 8080244
F: +31 (0) 72 8080142

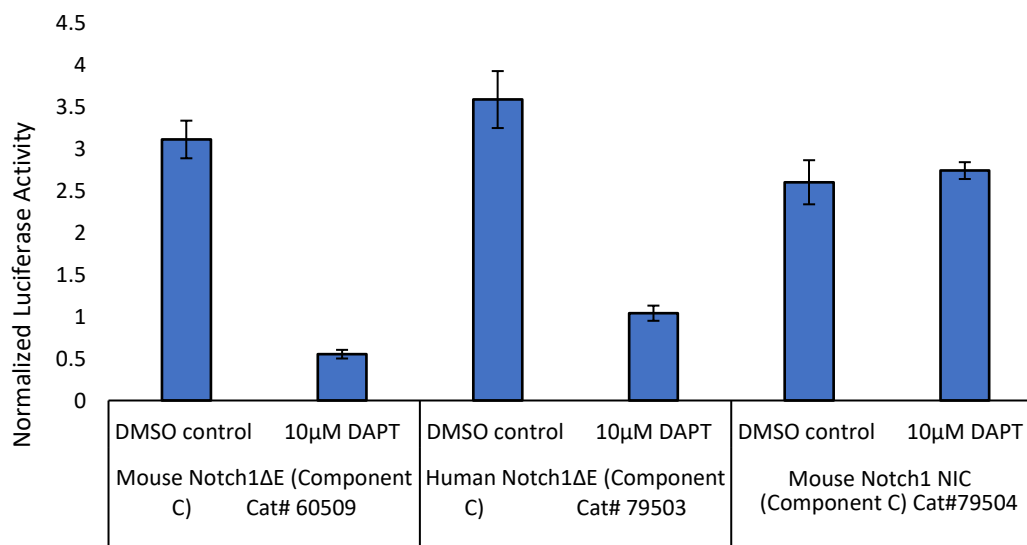
Switzerland 
Via Lisano 3,
(CP.683)
CH-6900
T: +41 (0) 91 604 55 22
F: +41 (0) 91 605 17 85

Germany 
Bockenheimer Landstr. 17/19
60325 Frankfurt/Main
T: +49 (0) 69 779099
F: +49 (0) 69 13376880

2a. DAPT completely blocks Notch1ΔE-induced CSL (CBF1/RBP-Jκ) reporter activity.
The results are shown as normalized CSL (CBF1/RBP-Jκ) luciferase reporter activity.



2b. Dose response of Notch1ΔE-induced CSL (CBF1/RBP-Jκ) reporter activity to DAPT.



OUR PRODUCTS ARE FOR RESEARCH USE ONLY. NOT FOR DIAGNOSTIC OR THERAPEUTIC USE.

AMSBIO | www.amsbio.com | info@amsbio.com

UK & Rest of the World 
184 Park Drive, Milton Park
Abingdon OX14 4SE.
T: +44 (0) 1235 828 200
F: +44 (0) 1235 820 482

North America 
1035 Cambridge Street,
Cambridge, MA 02141.
T: +1 (617) 945-5033 or
T: +1 (800) 987-0985
F: +1 (617) 945-8218

Europe 
Berenkoog 41,
1822 BH Alkmaar,
Netherlands
T: +31 (0) 72 8080244
F: +31 (0) 72 8080142

Switzerland 
Via Lisano 3,
(CP.683)
CH-6900
T: +41 (0) 91 604 55 22
F: +41 (0) 91 605 17 85

Germany 
Bockenheimer Landstr. 17/19
60325 Frankfurt/Main
T: +49 (0) 69 779099
F: +49 (0) 69 13376880

2c. Effect of DAPT on related Notch1 reporter kit products compared to human Notch1ΔE. DAPT also completely blocks mouse Notch1ΔE-induced CSL (CBF1/RBP-Jκ) reporter activity (#60509), but does not affect mouse Notch1 NICD-induced CSL (CBF1/RBP-Jκ) reporter activity (#79504). The results are shown as normalized CSL (CBF1/RBP-Jκ) luciferase reporter activity.

Related Products

<u>Product name</u>	<u>Catalog#</u>	<u>Size</u>
Mouse Notch Pathway Reporter Kit	60509	500 rxns
Mouse NICD Notch Pathway Reporter Kit	79504	500 rxns
Dual Luciferase (Firefly-Renilla) Assay System	60683	100 mL
Medium 1	79259	100 mL
Notch CSL Reporter – HEK293 Cell line	60652	2 vials
Transfection Collection™ :		
Notch1/CSL Transient Pack (Notch Signaling Pathway)	79285	500 rxns

References

1. Lu, F.M., *et al.* (1996) Constitutively active human Notch1 binds to the transcription factor CBF1 and stimulates transcription through a promoter containing a CBF1-responsive element. *Proc. Natl. Acad. Sci. USA* **93(11)**: 5663-5667.
2. Kanungo, J., *et al.* (2008) The Notch signaling inhibitor DAPT down-regulates cdk5 activity and modulates the distribution of neuronal cytoskeletal proteins. *J. Neurochem.* **106**: 2236.

OUR PRODUCTS ARE FOR RESEARCH USE ONLY. NOT FOR DIAGNOSTIC OR THERAPEUTIC USE.

AMSBIO | www.amsbio.com | info@amsbio.com

UK & Rest of the World 
184 Park Drive, Milton Park
Abingdon OX14 4SE.
T: +44 (0) 1235 828 200
F: +44 (0) 1235 820 482

North America 
1035 Cambridge Street,
Cambridge, MA 02141.
T: +1 (617) 945-5033 or
T: +1 (800) 987-0985
F: +1 (617) 945-8218

Europe 
Berenkoog 41,
1822 BH Alkmaar,
Netherlands
T: +31 (0)72 8080244
F: +31 (0)72 8080142

Switzerland 
Via Lisano 3,
(CP.683)
CH-6900
T: +41 (0) 91 604 55 22
F: +41 (0) 91 605 17 85

Germany 
Bockenheimer Landstr. 17/19
60325 Frankfurt/Main
T: +49 (0) 69 779099
F: +49 (0) 69 13376880