

Data Sheet

PD-L2 (CD273), Fc fusion

Human, recombinant, Fc fusion protein
Catalog #: 71107
Lot #: 150120 **Conc.:** 2.83 mg/ml

Formulated in: 40 mM Tris-HCl, pH 8.0, 110 mM NaCl, 2.2 mM KCl, and 20% glycerol

Stability: At least 6 months at -80°C . Avoid freeze/thaw cycles. Protein may be diluted to $\geq 100 \mu\text{g/ml}$ in PBS + glycerol and stored at -80°C .

References:

1. Latchman, Y., *et al.*, *Nat. Immunol.* 2001 Mar;**2(3)**:261-8.
2. Saunders, P.A., *et al.*, *Eur. J. Immunol.* 2005 Dec;**35(12)**:3561-9.

Description:

Human secreted Programmed Death Ligand 2 (PD-L2)-Fc fusion protein, also known as CD273, PDCDL1G2, and B7-DC, GenBank Accession No. NM_025239, a.a. 20-219, fused at the C-terminus to the Fc portion of human IgG1 expressed in a HEK293 cell expression system. MW = 49 kDa.

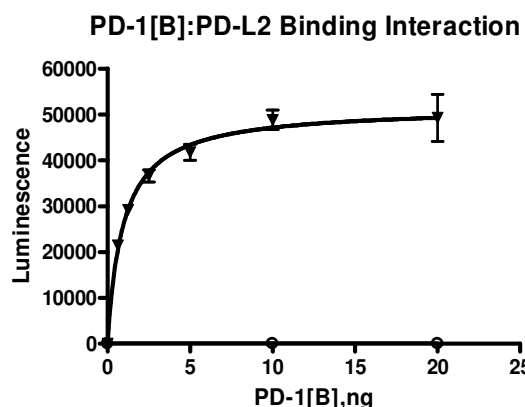
Assay Conditions:

PD-1-PD-L2 binding activity, measured using the PD-1[Biotinylated]:PD-L2 Inhibitor Screening Assay Kit, BPS Bioscience, Catalog #72006

Application:

Useful for the study of protein-protein interaction and *in vitro* and *in vivo* protein function.

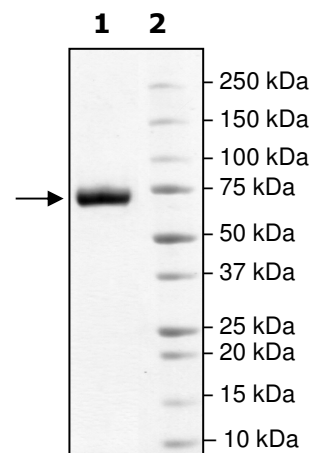
Quality Assurance



**4-20% SDS-PAGE
Coomassie staining**

Lane 1:
4 μg PD-L2-Fc
Lane 2:
Protein Marker

MW: 49 kDa + glycans
Purity: $\geq 90\%$



FOR RESEARCH USE ONLY. NOT FOR DIAGNOSTIC OR THERAPEUTIC USE.

AMSBIO | www.amsbio.com | info@amsbio.com

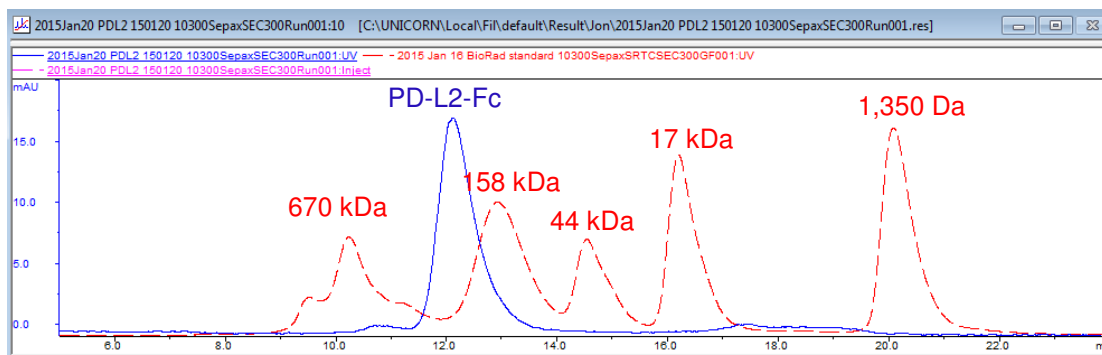
UK & Rest of the World
 184 Park Drive, Milton Park
 Abingdon OX14 4SE, UK
 T: +44 (0)1235 828 200
 F: +44 (0) 1235 820 482

North America
 1035 Cambridge Street,
 Cambridge, MA 02141
 T: +1 (617) 945-5033 or
 T: +1 (800) 987-0985
 F: +1 (617) 945-8218

Germany
 Bockenheimer Landstr. 17/19
 60325 Frankfurt/Main
 T: +49 (0) 69 779099
 F: +49 (0) 69 13376880

Switzerland
 Centro Nord-Sud 2E
 CH-6934 Bioggio-Lugano
 T: +41(0) 91 604 55 22
 F: +41(0) 91 605 17 85

Gel Filtration Curve



Sequence:

LFTVTVPKELYIIIEHGSNVTLECNFDTGSHVNLGAITASLQKVENDTSPHRERATLLEEQ
 LPLGKASFHQPQVRDEGQYQCIIYGVAWDYKYLTCLKVKASYRKINTHILKVPETDEVE
 LTCQATGYPLAEVSWPNVSPANTSHSRTPEGLYQVTSVLRLLKPPPGRNFSCVFWNT
 HVRELTASIDLQSQMEPRTHPIEGRMDPKSCDKTHTCPPCPAPPELLGGPSVFLFPPKP
 KDTLMISRTPEVTCVVVDVSHEDPEVKFNWYVDGVEVHNAKTKPREEQYNSTYRVVSV
 LTVLHQDWLNGKEYKCKVSNKALPAPIEKTISKAKGQPREPQVYTLPPSREEMTKNQV
 SLTCLVKGFPYSDIAVEWESNGQPENNYKTTTPVLDSDGSFFLYSKLTVDKSRWQQGN
 VFSCSVMHEALHNHYTQKSLSLSPGK

Black: PD-L2 (a.a. 20-219)

Green: linker

Red: Fc Fusion human IgG (a.a. 100-330)

FOR RESEARCH USE ONLY. NOT FOR DIAGNOSTIC OR THERAPEUTIC USE.

AMSBIO | www.amsbio.com | info@amsbio.com

UK & Rest of the World
 184 Park Drive, Milton Park
 Abingdon OX14 4SE, UK
 T: +44 (0)1235 828 200
 F: +44 (0) 1235 820 482

North America
 1035 Cambridge Street,
 Cambridge, MA 02141
 T: +1 (617) 945-5033 or
 T: +1 (800) 987-0985
 F: +1 (617) 945-8218

Germany
 Bockenheimer Landstr. 17/19
 60325 Frankfurt/Main
 T: +49 (0) 69 779099
 F: +49 (0) 69 13376880

Switzerland
 Centro Nord-Sud 2E
 CH-6934 Bioggio-Lugano
 T: +41(0) 91 604 55 22
 F: +41(0) 91 605 17 85