

# Rabbit anti DCLK1(pY30) Polyclonal Antibody

Alternative Name(s): CL1; DCLK; CLICK1; DCDC3A; DCAMKL1

## Order Information

- **Description:** DCLK1(pS30)
- **Catalogue:** 630-620
- **Lot:** See label
- **Size:** 100ug/200ul
- **Host:** Rabbit
- **Clone:** nan
- **Application:** IHC(P), WB
- **Reactivity:** Hu, Ms, Rt, Bv

## ANTIGEN PREPARATION

A synthetic peptide corresponding to N-terminus of rat DCLK1 at the phosphorylation site of DCLK1 (S30(b)/337(a)) at Serine 30 covers epitope of -SPSPT-S-PGSLR-. This sequence is identical to human, mouse, rat.

## BACKGROUND

Doublecortin-like kinase 1 (DCLK1) is emerging as a tumor specific stem cell marker in colorectal and pancreatic cancer. This gene encodes a member of the protein kinase superfamily and the doublecortin family. It contains two N-terminal doublecortin domains, which bind microtubules and regulate microtubule polymerization, a C-terminal serine/threonine protein kinase domain, which shows substantial homology to Ca<sup>2+</sup>/calmodulin-dependent protein kinase, and a serine/proline-rich domain in between the doublecortin and the protein kinase domains, which mediates multiple protein-protein interactions. The microtubule-polymerizing activity of the encoded protein is independent of its protein kinase activity. The encoded protein is involved in several different cellular processes, including neuronal migration, retrograde transport, neuronal apoptosis and neurogenesis. This gene is up-regulated by brain-derived neurotrophic factor and associated with memory and general cognitive abilities. Multiple transcript variants generated by two alternative promoter usage and alternative splicing have been reported, but the full-length nature and biological validity of some variants have not been defined. These variants encode different isoforms, which are differentially expressed and have different kinase activities

## PURIFICATION

The Rabbit IgG is purified by Epitope Affinity Purification

## FORMULATION

This affinity purified antibody is supplied in sterile Tris-buffered saline (pH7.2) containing antibody stabilizer

## SPECIFICITY

This antibody recognizes human DCLK1(pS30) protein with a phosphorylation site Serine 30. It cross reacts to human, mice and rat.

## STORAGE

The antibodies are stable for 24 months from date of receipt when stored at -20oC to -70oC. The antibodies can be stored at 2oC-8oC for three month without detectable loss of activity. Avoid repeated freezing-thawing cycles.

## APPLICATIONS/SUGGESTED WORKING DILUTIONS\*

- Western Blot: 0.1-1 µg/ml
- ELISA: 0.01-0.1 µg/ml
- Immunoprecipitation: 2-5 µg/ml
- IHC: 2-10 µg/ml
- Flow cytometry: Not tested
- Molecular Weight: 93.0
- Positive Control: Kidney Tissue

**FOR RESEARCH USE ONLY.**

- Cellular Location: Cell Membrane

\*Optimal dilutions should be determined by researchers for the specific applications.

**FOR RESEARCH USE ONLY.**

AMSBIO | [www.amsbio.com](http://www.amsbio.com) | [info@amsbio.com](mailto:info@amsbio.com)

UK & Rest of the World   
184 Park Drive, Milton Park  
Abingdon OX14 4SE.  
T: +44 (0) 1235 828 200  
F: +44 (0) 1235 820 482

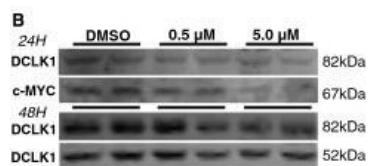
North America   
1035 Cambridge Street,  
Cambridge, MA 02141.  
T: +1 (617) 945-5033 or  
T: +1 (800) 987-0985  
F: +1 (617) 945-8218

Europe   
Berenkoog 41,  
1822 BH Alkmaar,  
Netherlands  
T: +31 (0)728080244  
F: +31 (0)728080142

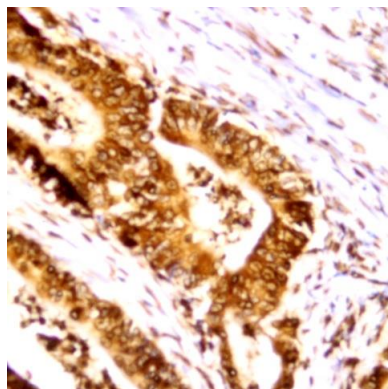
Switzerland   
Via Lisano 3,  
(CP.683)  
CH-6900  
T: +41 (0) 91 604 55 22  
F: +41 (0) 91 605 17 85

Germany   
Bockenheimer Landstr. 17/19  
60325 Frankfurt/Main  
T: +49 (0) 69 779099  
F: +49 (0) 69 13376880

## DATA ATTACHMENTS



Western Blot: The cell lysate derived from HCT116 treated by Kinase inhibitor at (0 or 0.5  $\mu$ M for 8 hr) was immuno-blotted by Rabbit anti phosphospecific DCLK1(pS30) (Cat#630-620). The immunoreactive bands around 84 kDa and 52 kDa were observed. The result shared in curtsey by Dr. Kouchen and Dr. Qu (Mol. Can. 2014:13:103)



Immunohistochemistry: Human colon carcinoma (FFPE) stained with Rabbit anti-DCLK1 (pS30) antibody (Cat# 630-620) at 1:200 for 10 min @ RT. Staining of formalin-fixed tissue requires boiling tissue sections in 10 mM Citrate Buffer, pH 6.0 for 10 min followed by cooling at RT for 20 min.

**FOR RESEARCH USE ONLY.**

AMSBIO | [www.amsbio.com](http://www.amsbio.com) | [info@amsbio.com](mailto:info@amsbio.com)

UK & Rest of the World   
184 Park Drive, Milton Park  
Abingdon OX14 4SE.  
T: +44 (0) 1235 828 200  
F: +44 (0) 1235 820 482

North America   
1035 Cambridge Street,  
Cambridge, MA 02141.  
T: +1 (617) 945-5033 or  
T: +1 (800) 987-0985  
F: +1 (617) 945-8218

Europe   
Berenkoog 41,  
1822 BH Alkmaar,  
Netherlands  
T: +31 (0)72 8080244  
F: +31 (0)72 8080142

Switzerland   
Via Lisano 3,  
(CP.683)  
CH-6900  
T: +41 (0) 91 604 55 22  
F: +41 (0) 91 605 17 85

Germany   
Bockenheimer Landstr. 17/19  
60325 Frankfurt/Main  
T: +49 (0) 69 779099  
F: +49 (0) 69 13376880