

Order Information

Description: Rabbit anti-Lysozyme
 Catalogue#: 601-780
 Lot#: See the label
 Size: 100 ug/200 ul
 Host: Rabbit
 Clone: N/A
 Application: ELISA, WB
 Reactivity: Chicken

Rabbit anti Lysozyme Polyclonal Antibody

Alternate Names: LYZ; LYZC;

ANTIGEN PREPARATION

A synthetic peptide corresponding to the C-terminus 115-129aa of chicken egg white Lysozyme protein.

BACKGROUND

Lysozyme is 129 amino acids protein isolated from chicken egg white. It is a ubiquitous enzyme which can catalyze the hydrolysis of the beta (1-4) glycosidic bond in bacterial peptidoglycan, a major component of the bacterial cell membrane. It appears in many tissues and body fluids. Lack of lysozyme C can cause Amyloidosis type 8 (AMYL8) diseases. The major proteins of chicken eggs are: Ovalbumin (45 kda, 54%), Conalbumin (13%, 80 kda), Ovomuroid (11%, 28 kda), Lysozyme (3.5%, 14 kda), and other proteins.

PURIFICATION

The Rabbit IgG is purified by Epitope Affinity Purification.

SPECIFICITY

This antibody recognizes ~14 kDa of chicken egg white Lysozyme protein.

FORMULATION

This affinity purified antibody is supplied in sterile phosphate-buffered saline (pH7.2) containing antibody stabilizer

STORAGE

The antibodies are stable for 12 months from date of receipt when stored at -20°C to -70°C. The antibodies can be stored at 2°C-8°C for three month without detectable loss of activity. Avoid repeated freezing-thawing cycles.

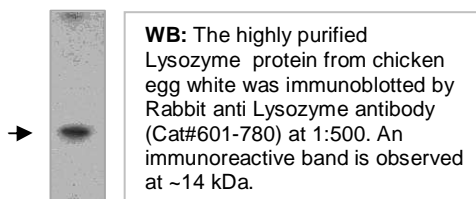
APPLICATIONS/SUGGESTED WORKING DILUTIONS

Western Blot	0.1-1 µg/ml
ELISA	0.01-0.1 µg/ml
Immunoprecipitation	N/A
IHC	N/A
Flow cytometry	N/A

MOLECULAR WEIGHT:	~14 kDa
POSITIVE CONTROL:	Lysozyme
CELLULAR LOCATION:	N/A

Optimal dilutions should be determined by researchers for the specific applications.

DATA ATTACHMENTS



REFERENCES

Palmiter, R.D., Gagnon, J., Ericsson, L.H. and Walsh, K.A. Precursor of egg white lysozyme. Amino acid sequence of an NH2-terminal extension. J. Biol. Chem. 252 (18), 6386-6393 (1977)

AMSBIO | www.amsbio.com | info@amsbio.com

AMSBIO LLC
 USA & Canada 
 1035 Cambridge Street,
 Cambridge, MA 02141
 T: +1 (617) 945-5033 or
 T: +1 (800) 987-0985
 F: +1 (617) 945-8218

AMSBIO Europe BV
 EU 
 Berenkoog 41,
 1822 BH Alkmaar,
 Netherlands
 T: +31 (0) 72 8080244
 F: +31 (0) 72 8080142

AMS Biotechnology (Europe) Ltd
 UK & Rest of the World 
 184 Park Drive, Milton Park
 Abingdon OX14 4SE
 T: +44 (0) 1235 828 200
 F: +44 (0) 1235 820 482

AMS Biotechnology (Europe) Ltd
 Switzerland 
 Via Lisano 3,
 (CP.683)
 CH-6900 Massagno
 T: +41 (0) 91 604 55 22
 F: +41 (0) 91 605 17 85

AMSBIO Europe BV
 Deutschland 
 T: +49 (0) 69 779099
 F: +49 (0) 69 13376880