

Rabbit anti SOX-1 Polyclonal Antibody

Alternative Name(s): SRY (sex determining region Y)-box 1

Order Information

- **Description:** SOX-1
- **Catalogue:** 601-480
- **Lot:** See label
- **Size:** 100ug/200ul
- **Host:** Rabbit
- **Clone:** nan
- **Application:** IHC(P), WB
- **Reactivity:** Hu, Ms

ANTIGEN PREPARATION

A synthetic peptide derived from N-terminus of Human SOX-1 protein. This sequence is identical among human and mouse.

BACKGROUND

The SOX1 is a transcription factor, a member of the SRY-related HMG-box (SOX) family involved in the regulation of embryonic development and in the determination of cell fate. SOX1 is expressed in the developing brain. SOX1 is related to the HMG box of family transcription factors, which are a highly motile group, with a highly conserved DNA binding domain. Sox1 utilizes multiple pathways to play a direct role on cell fate. SOX1 is also directly involved with sex determination of the Y chromosome. Binding of the SOX1, C-terminus, to the Hes 1 promoter results in Hes1 suppression and attenuation of Notch signaling. When the C-terminus of SOX1 binds to β -catenin, TCF/LEF is suppressed, resulting in the attenuation of Wnt signaling.

PURIFICATION

The Rabbit IgG is purified by Epitope Affinity Purification

FORMULATION

This affinity purified antibody is supplied in sterile Phosphatebuffered saline (pH7.2) containing antibody stabilizer

SPECIFICITY

This antibody recognizes ~40 kDa of human SOX-1 protein. It also reacts with mouse. The other species are not tested.

STORAGE

The antibodies are stable for 24 months from date of receipt when stored at -20°C to -70°C . The antibodies can be stored at 2°C - 8°C for three month without detectable loss of activity. Avoid repeated freezing-thawing cycles.

APPLICATIONS/SUGGESTED WORKING DILUTIONS*

- Western Blot: 0.1-1 $\mu\text{g/ml}$
- ELISA: 0.01-0.1 $\mu\text{g/ml}$
- Immunoprecipitation: 2-5 $\mu\text{g/ml}$
- IHC: 2-10 $\mu\text{g/ml}$
- Flow cytometry: Not tested
- Molecular Weight: 40.0
- Positive Control: Kidney Tissue
- Cellular Location: Cell Membrane

*Optimal dilutions should be determined by researchers for the specific applications.

AMSBIO | www.amsbio.com | info@amsbio.com

UK & Rest of the World 
184 Park Drive, Milton Park
Abingdon OX14 4SE.
T: +44 (0) 1235 828 200
F: +44 (0) 1235 820 482

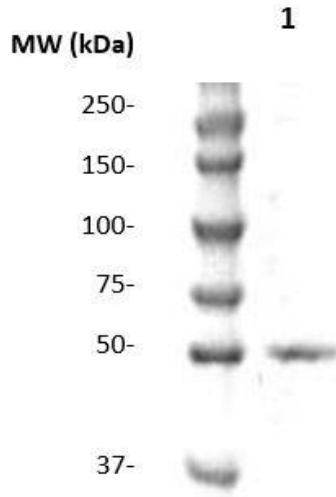
North America 
1035 Cambridge Street,
Cambridge, MA 02141.
T: +1 (617) 945-5033 or
T: +1 (800) 987-0985
F: +1 (617) 945-8218

Europe 
Berenkoog 41,
1822 BH Alkmaar,
Netherlands
T: +31 (0)728080244
F: +31 (0)728080142

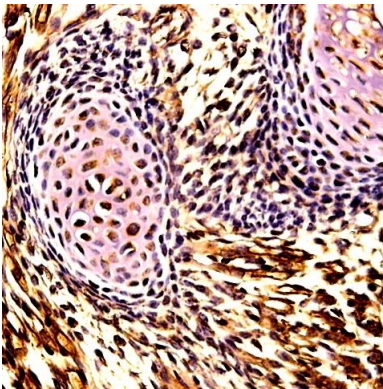
Switzerland 
Via Lisano 3,
(CP.683)
CH-6900
T: +41 (0) 91 604 55 22
F: +41 (0) 91 605 17 85

Germany 
Bockenheimer Landstr. 17/19
60325 Frankfurt/Main
T: +49 (0) 69 779099
F: +49 (0) 69 13376880

DATA ATTACHMENTS



Western Blot: The whole cell lysate derived from embryonic mouse brain (20 ug/lane) immunoblotted by Rabbit anti-SOX-1 (Cat#601-480) at 1:500. An immunoreactive protein band was observed around 40kDa.



Immunohistochemistry: Mouse embryo tissue (FFPE) stained with Rabbit anti-SOX-1 antibody (Cat# 601-480) at 1:200 for 10 min @ RT. Staining of formalin-fixed tissue requires boiling tissue sections in 10 mM Citrate Buffer, pH 6.0 for 10 min followed by cooling at RT for 20 min.

AMSBIO | www.amsbio.com | info@amsbio.com

UK & Rest of the World 
184 Park Drive, Milton Park
Abingdon OX14 4SE.
T: +44 (0) 1235 828 200
F: +44 (0) 1235 820 482

North America 
1035 Cambridge Street,
Cambridge, MA 02141.
T: +1 (617) 945-5033 or
T: +1 (800) 987-0985
F: +1 (617) 945-8218

Europe 
Berenkoog 41,
1822 BH Alkmaar,
Netherlands
T: +31 (0)728080244
F: +31 (0)728080142

Switzerland 
Via Lisano 3,
(CP.683)
CH-6900
T: +41 (0) 91 604 55 22
F: +41 (0) 91 605 17 85

Germany 
Bockenheimer Landstr. 17/19
60325 Frankfurt/Main
T: +49 (0) 69 779099
F: +49 (0) 69 13376880