

Order Information

Description: Rabbit anti LRP6 (pT1479)
 Catalogue#: 601-060
 Lot#: See the label
 Size: 100 ug/200 ul
 Host: Rabbit
 Clone: N/A
 Application: ELISA, WB, IHC
 Reactivity: Hu, Rt, Ms, Bv, Cn

Rabbit anti LRP6 Phospho-specific Antibody**Alternate Names:****Low-density lipoprotein Receptor-related Protein 6 (LRP6)****ANTIGEN PREPARATION**

A synthetic peptide corresponding to the epitope KGTYF at a phosphorylation threonine1479 in LRP6 protein

BACKGROUND

Low-density lipoprotein receptor (LDLR)-related protein 6 (LRP6) is a member of the LDLR family which consists of cell surface proteins involved in receptor-mediated endocytosis of specific ligands. LRP5 causes several human diseases including bone mineral density variability¹, endosteal hyperostosis, autosomal dominant osteopetrosis type I etc. The V171 mutation in LRP5 causes high bone density by impairing the action of a normal antagonist of the Wnt pathway and thus increasing Wnt signaling. The activity of LRP5 and LRP6 can be inhibited by binding of some members of Dickkopf (DKK) family proteins. Upon stimulation with Wnt, LRP5 and LRP6 are phosphorylated at multiple sites including Thr 1479, Ser 1490 and Thr 1492 by kinases such as GSK-3 and CK1.

PURIFICATION

The Rabbit IgG is purified by Site-specific Epitope Affinity Purification.

SPECIFICITY

This antibody recognizes ~180 kDa of human LRP6 protein. It also reacts with mouse and rat. The other species are not tested.

FORMULATION

This affinity purified antibody is supplied in sterile Phosphate-buffered saline (pH7.2) containing antibody stabilizer

STORAGE

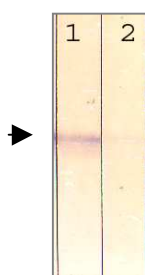
The antibodies are stable for 12 months from date of receipt when stored at -20°C to -70°C. The antibodies can be stored at 2°C-8°C for three month without detectable loss of activity. Avoid repeated freezing-thawing cycles.

APPLICATIONS/SUGGESTED WORKING DILUTIONS

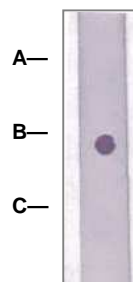
Western Blot	0.1-1 µg/ml
ELISA	0.01-0.1 µg/ml
Immunoprecipitation	2-5 µg/ml
IHC	Not tested
Flow cytometry	Not tested

MOLECULAR WEIGHT:	180 kDa
POSITIVE CONTROL:	Conditioned 3T3 cell lysate
CELLULAR LOCATION:	N/A

Optimal dilutions should be determined by researchers for the specific applications.

DATA ATTACHMENTS

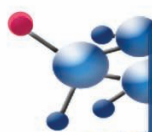
Western Blot: The cell lysate derived from conditioned 3T3 was immunoprobed by Rabbit anti-LRP6(pT1479) (Cat#601-060) at 1:500. An immunoreactive band is observed around ~180kDa (1). This band is abolished by pre-incubation with immunizing peptide (2).



Dot Blot: 1 µg peptide was blot onto NC membrane (A- Non-related phosphospecific peptide; B-LRP6(pT1479); C: Non- Phosphopeptide LRP6) was blotted by Rabbit anti-LRP6(pT1479) (Cat#601-060) a 1:2000 dilution.

REFERENCES:

Zahid Khan et al. (2007), Molecular and Cellular Biology, 27(20), 7291-7301.

FOR RESEARCH USE ONLY.

UK & Rest of World
 184 Milton Park, Abingdon
 OX14 4SE, Oxon, UK
 Tel: +44 (0) 1235 828 200
 Fax: +44 (0) 1235 820 482

Switzerland
 Centro Nord-Sud 2E
 CH-6934 Bioggio-Lugano
 Tel: +41 (0) 91 604 55 22
 Fax: +41 (0) 91 605 17 85

Deutschland
 Bockenheimer Landstr. 17/19
 60325 Frankfurt/Main
 Tel: +49 (0) 69 779099
 Fax: +49 (0) 69 13376880

North America
 23591 El Toro Rd, Suite #180
 Lake Forest, CA 92630
 Tel: + 1 800 987 0985
 Fax: + 1 949 265 7703

amsbio
 info@amsbio.com

www.amsbio.com
 AMS Biotechnology