

Order Information

Description: Rabbit anti-METRIN (CT)
 Catalogue#: 600-450
 Lot#: See the label
 Size: 100 ug/200 ul
 Host: Rabbit
 Clone: N/A
 Application: ELISA, WB, IHC
 Reactivity: Hu, Ms, Rt

Rabbit anti Meteorin (CT) Polyclonal Antibody

Alternate Names: METRN; Meteorin

ANTIGEN PREPARATION

A synthetic peptide corresponding to the C-terminus of Meteorin protein. This sequence is identical among human, rat and mouse.

BACKGROUND

The Meteorin, a secreted protein, is expressed in undifferentiated neural progenitors and in astrocyte lineage, including radial glia, or glial cells which are major components of the nervous system. Meteorin selectively promoted astrocyte formation from mouse cerebrocortical neurospheres in differentiation culture, whereas it induced cerebellar astrocytes to become radial glia. Meteorin also induced axonal extension in small and intermediate neurons of sensory ganglia by activating nearby satellite glia. Meteorin plays important roles in both glial cell differentiation and axonal network formation during neurogenesis.

PURIFICATION

The Rabbit IgG is purified by specific Epitope Affinity Purification.

SPECIFICITY

This antibody recognizes ~30 kDa of METRN protein. It cross react with mouse, rat and human. The other species are not tested.

FORMULATION

This affinity purified antibody is supplied in sterile Tris-buffered saline (pH7.2) containing antibody stabilizer

STORAGE

The antibodies are stable for 12 months from date of receipt when stored at -20°C to -70°C. The antibodies can be stored at 2°C-8°C for three month without detectable loss of activity. Avoid repeated freezing-thawing cycles.

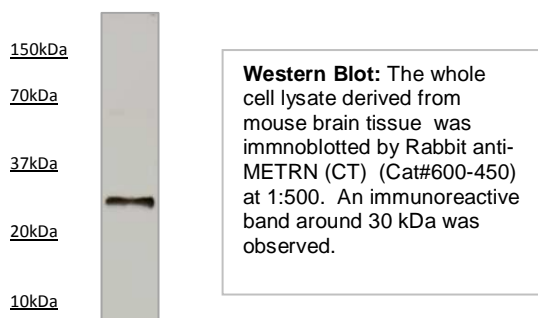
APPLICATIONS/SUGGESTED WORKING DILUTIONS

Western Blot	0.1-1 µg/ml
ELISA	0.01-0.1 µg/ml
Immunoprecipitation	2-5 µg/ml
IHC	2-5 µg/ml
Flow cytometry	Not tested

MOLECULAR WEIGHT:	~30 kDa
POSITIVE CONTROL:	Brain tissue
CELLULAR LOCATION:	Extracellular or cytoplasmic

Optimal dilutions should be determined by researchers for the specific applications.

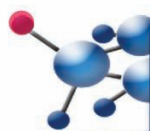
DATA ATTACHMENTS



REFERENCES

Nishino, J., Yamashita, K., Hashiguchi, H., Fujii, H., Shimazaki, T. and Hamada, H. Meteorin: a secreted protein that regulates glial cell differentiation and promotes axonal extension. EMBO J. 23 (9), 1998-2008 (2004)

FOR RESEARCH USE ONLY.



UK & Rest of World
 184 Milton Park, Abingdon
 OX14 4SE, Oxon, UK
 Tel: +44 (0) 1235 828 200
 Fax: +44 (0) 1235 820 482

Switzerland
 Centro Nord-Sud 2E
 CH-6934 Bioggio-Lugano
 Tel: +41 (0) 91 604 55 22
 Fax: +41 (0) 91 605 17 85

Deutschland
 Bockenheimer Landstr. 17/19
 60325 Frankfurt/Main
 Tel: +49 (0) 69 779099
 Fax: +49 (0) 69 13376880

North America
 23591 El Toro Rd, Suite #180
 Lake Forest, CA 92630
 Tel: +1 800 987 0985
 Fax: +1 949 265 7703