

Description: Rabbit anti-β-Catenin (pS675)
 Catalogue#: 500-8864
 Lot#: See the label
 Size: 100 µg/200 µl
 Host: Rabbit
 Clone: N/A
 Application: ELISA, WB, IHC
 Reactivity: Hu, Rt, Ms

Rabbit anti Phospho- β-Catenin (pS675) Antibody

Synonym: Beta catenin; Cadherin associated protein; Catenin beta 1; CATNB
 CTNNB; CTNNB1

ANTIGEN PREPARATION

A synthetic peptide corresponding to the epitope –KRLSVEL- with a single phosphorylation site Ser675 of human β-catenin.

BACKGROUND

Beta-catenin, a cytosolic, 88 kDa, 781 amino acid protein, belongs to the β-catenin family. The N-terminus domain, contains the binding site and the phosphorylation sites. Beta-Catenin serves as a link between cytoskeleton actin and transmembrane cadherin(s). It is believed to contribute to tight cell-to-cell adhesion. It can enter the nucleus and interact with the TCF/LEF family of transcription factors, initiating gene expression. Normally, β-catenin transcriptional activity is suppressed by a Ser/Thr kinase termed GSK3β and/or Casein Kinase I (CK1). Kinases are constitutively active and phosphorylates β-catenin at multiple sites, including S33 and S37, Y96, Y228, Y280, S675, etc. Phosphorylation of β-catenin targets the molecule for degradation via a ubiquitination-mediated pathway. GSK3β activity can be blocked by upstream signaling events such as Wnt-Frizzled interaction. This inhibits GSK3β, allowing unphosphorylated β-catenin to enter the nucleus and initiate gene activation. The phosphorylation of beta-catenin might contribute to tumorigenesis.

PURIFICATION

The Rabbit IgG is purified by Site-specific Epitope Affinity Purification.

SPECIFICITY

This antibody recognizes ~88 kDa of phosphorylated human beta-Catenin protein at Ser 675. It also reacts with mouse and rat. The other species are not tested.

FORMULATION

This affinity purified antibody is supplied in sterile Tris-buffered saline (pH7.2) containing antibody stabilizer

STORAGE

The antibodies are stable for 12 months from date of receipt when stored at –20°C to –70°C. The antibodies can be stored at 2°C-8°C for three month without detectable loss of activity. Avoid repeated freezing-thawing cycles.

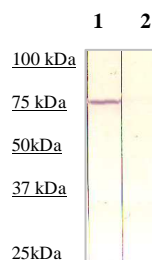
APPLICATIONS/SUGGESTED WORKING DILUTIONS

Western Blot	0.1-1 µg/ml
ELISA	0.01-0.1 µg/ml
Immunoprecipitation	2-5 µg/ml
IHC	2-5 µg/ml
Flow cytometry	Not tested

MOLECULAR WEIGHT:	88 kDa
POSITIVE CONTROL:	HELA cell lysate
CELLULAR LOCATION:	Cell membrane/cytoplasmic

Optimal dilutions should be determined by researchers for the specific applications.

DATA ATTACHMENTS

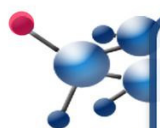


Western Blot: The cell lysate derived from HELA was immunoprobed by either Rabbit anti-beta-Catenin (pS675) (Cat#500-8864) (Lane 1) or the antibody pre-incubated by immunization peptide (lane 2) at 1:500 dilution.

REFERENCES

Park, C.S. *et al.* (2004) J. Biol. Chem. **279**:19592.

FOR RESEARCH USE ONLY.



UK & Rest of World

184 Milton Park, Abingdon
 OX14 4SE, Oxon, UK
 Tel: +44 (0) 1235 828 200
 Fax: +44 (0) 1235 820 482

Switzerland

Centro Nord-Sud 2E
 CH-6934 Bioggio-Lugano
 Tel: +41 (0) 91 604 55 22
 Fax: +41 (0) 91 605 17 85

Deutschland

Bockenheimer Landstr. 17/19
 60325 Frankfurt/Main
 Tel: +49 (0) 69 779099
 Fax: +49 (0) 69 13376880

North America

23591 El Toro Rd, Suite #180
 Lake Forest, CA 92630
 Tel: + 1 800 987 0985
 Fax: + 1 949 265 7703

amsbio

info@amsbio.com

www.amsbio.com
 AMS Biotechnology