

**Order Information**

Description: Rabbit anti-GSK3 $\alpha$   
 Catalogue#: 500-2914  
 Lot#: See the label  
 Size: 100  $\mu$ g/200  $\mu$ l  
 Host: Rabbit  
 Clone: N/A  
 Application: ELISA, WB, IHC  
 Reactivity: Hu: Rt: Ms.

**Rabbit anti-GSK-3 $\alpha$  Polyclonal Antibody****Synonym: Glycogen synthase kinase 3 alpha (GSK3 $\alpha$ )****ANTIGEN PREPARATION**

A synthetic peptide corresponding to N-terminus of human GSK3-alpha protein. This sequence is identical among human, mouse and rat.

**BACKGROUND**

Glycogen Synthase Kinase-3 has two isoforms, GSK-3 $\alpha$  and GSK3 $\beta$ . GSK3 is a serine/threonine kinase that affects glycogen metabolism by phosphorylating and down-regulating the activity of muscle glycogen synthase as well as the regulation in Wnt signal pathway. GSK-3 alpha reduces the substrates beta-catenin and tau to imply an important role in Wnt signaling and tauopathies such as Alzheimer's disease..

**PURIFICATION**

The Rabbit IgG is purified by Epitope Affinity Purification.

**SPECIFICITY**

This antibody recognizes GSK-3 alpha. It reacts with human, mouse and rat. The other species are not tested.

**APPLICATIONS/SUGGESTED WORKING DILUTIONS**

Western Blot	0.1-1 $\mu$ g/ml
ELISA	0.01-0.1 $\mu$ g/ml
Immunoprecipitation	2-5 $\mu$ g/ml
IHC	Not tested
Flow cytometry	Not tested

**FORMULATION**

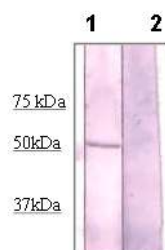
This affinity purified antibody is supplied in sterile Tris-buffered saline (pH7.2) containing antibody stabilizer

**STORAGE**

The antibodies are stable for 12 months from date of receipt when stored at -20°C to -70°C. The antibodies can be stored at 2°C-8°C for three month without detectable loss of activity. Avoid repeated freezing-thawing cycles.

<b>MOLECULAR WEIGHT:</b>	52 kDa
<b>POSITIVE CONTROL:</b>	3T3 cell lysate
<b>CELLULAR LOCATION:</b>	Cytoplasmic

Optimal dilutions should be determined by researchers for the specific applications.

**DATA ATTACHMENTS**

**Western Blot:** The 3T3 cell lysate was resolved onto 10% SDS-PAGE, transferred onto NC membrane, and followed by an immunoblotting with Rabbit anti GSK-3 alpha (Cat#500-2914) antibody at 1:500 (lane 1). Lane 2 was pre-incubated with immunizing peptide

**REFERENCES**

Ayodeji A Ssuni, et al. GSK3alpha exhibits beta-catenin and tau directed kinase activities that are modulated by Wnt (2006). Eur J Neurosci. 24 (12): 3387-92.

Yuko Kawakami, et al. Protein Kinase C  $\beta$  II Regulates Akt Phosphorylation on Ser-473 in a Cell Type- and Stimulus-specific Fashion (2004) THE J. Biol. Chem. 279 (46): 47720-47725.

**FOR RESEARCH USE ONLY.****UK & Rest of World**

184 Milton Park, Abingdon  
 OX14 4SE, Oxon, UK  
 Tel: +44 (0) 1235 828 200  
 Fax: +44 (0) 1235 820 482

**Switzerland**

Centro Nord-Sud 2E  
 CH-6934 Bioggio-Lugano  
 Tel: +41 (0) 91 604 55 22  
 Fax: +41 (0) 91 605 17 85

**Deutschland**

Bockenheimer Landstr. 17/19  
 60325 Frankfurt/Main  
 Tel: +49 (0) 69 779099  
 Fax: +49 (0) 69 13376880

**North America**

23591 El Toro Rd, Suite #180  
 Lake Forest, CA 92630  
 Tel: +1 800 987 0985  
 Fax: +1 949 265 7703

amsbio

info@amsbio.com

www.amsbio.com  
AMS Biotechnology