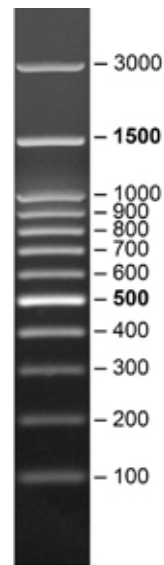


SERVA FastLoad 100 bp DNA Ladder

Code: 39316.01

(DNA Leiter, DNA Standard, DNA Marker)



Ready-to-Use DNA standard for agarose gel electrophoresis containing 12 fragments from 100 – 3000 base pairs. The 500 bp and 1500 bp bands have increased intensity and serve as reference points. For estimation of DNA mass of bands of similar size with comparable intensity, the approximate mass of each band is indicated (0.54 µg/load).

Recommended load is 5 µl/well. Contains Orange G and Xylene Cyanol as tracking dye.


Stable for 6 months at 25 °C and for 12 months at 4 °C. For long term storage store at -20 °C.

Application test: electrophoresis

HS: 38220000

Storage Temperature: -15 °C to -25 °C

AMSBIO | www.amsbio.com | info@amsbio.com

 **UK & Rest of the World**
184 Park Drive, Milton Park
Abingdon OX14 4SE, U.K.
T: +44 (0) 1235 828 200
F: +44 (0) 1235 820 482

 **North America**
1035 Cambridge Street,
Cambridge, MA 02141.
T: +1 (617) 945-5033 or
T: +1 (800) 987-0985
F: +1 (617) 945-8218

 **Germany**
Bockenheimer Landstr. 17/19
60325 Frankfurt/Main
T: +49 (0) 69 779099
F: +49 (0) 69 13376880

 **Switzerland**
Via Lisano 3
(CP.683)
6900 Massagno
T: +41 (0) 91 604 55 22
F: +41 (0) 91 605 17 85