

SERVA DNA Standard pUC 19 x Mspl, lyophilized

Cat. No.: 39304.01

Qty.: 1 x 50 µg

Fragment sizes (in Bp): 501, 489, 404, 331, 242, 190, 147, 111, 110, 67, 34 (2x), 26

How to dissolve the lyophilized DNA fragments:

Depending on the usage of the marker dissolve the DNA fragments in 1 x sample buffer (1 ml steril filtered sample buffer is supplied with each marker, for composition please see below) or, e.g. for subsequent labelling of DNA fragments, in TE buffer (10 mM Tris/HCl pH 7.5 and 1 mM EDTA). Add the volume of buffer needed for your application to the lyophilized DNA and incubate for 15 min at room temperature.

Buffer volume	50 µl	100 µl	250 µl	500 µl	1000 µl
µg DNA in 1 µl	1	0.5	0.2	0.1	0.05
µg DNA in 5 µl	5	2.5	1	0.5	0.25
µg DNA in 10 µl	10	5	2	1	0.5

Sample application:

for UV detection after EtBr. staining:

use 0.5 - 1.0 µg DNA fragments per lane

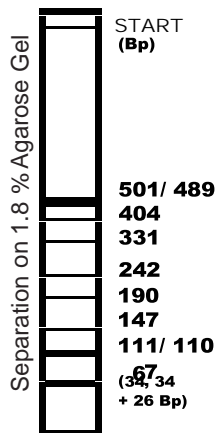
for detection using signal integrating systems after EtBr. staining:

use 0.1 - 0.5 µg per lane

Storage:

Store lyophilized DNA fragments at -20 °C, store resuspended DNA fragments at -20 °C; avoid repeated thaw/freeze cycles (> 10fold), if needed, aliquot the marker fragments.

1 x sample buffer (TE/G-buffer)	
Tris/HCl pH 7.5	10 mM
Sodium-acetate	5 mM
EDTA	2 mM
Glycerol	10 % (w/v)
Bromophenolblue	0.03 % (w/v)
Xylene Cyanol FF	0.02 % (w/v)



AMSBIO | www.amsbio.com | info@amsbio.com



UK & Rest of the World
184 Park Drive, Milton Park
Abingdon OX14 4SE, UK
T: +44 (0)1235 828 200
F: +44 (0) 1235 820 482



North America
1035 Cambridge Street,
Cambridge, MA 02141
T: +1 (617) 945-5033 or
T: +1 (800) 987-0985
F: +1 (617) 945-8218



Germany
Bockenheimer Landstr. 17/19
60325 Frankfurt/Main
T: +49 (0) 69 779099
F: +49 (0) 69 13376880



Switzerland
Centro Nord-Sud 2E
CH-6934 Bioggio-Lugano
T: +41(0) 91 604 55 22
F: +41(0) 91 605 17 85

SERVA DNA Standard λ x BstEII, lyophilized

Cat. No.: 39301.01

Qty.: 2 x 50 μ g

Fragment sizes (in Bp): 8.543, 7.242, 6.369, 5.687, 4.822, 4.324, 3.675, 2.323, 1.929, 1.371, 1.264, 702, 224, 117

How to dissolve the lyophilized DNA fragments:

Depending on the usage of the marker dissolve the DNA fragments in 1 x sample buffer (1 ml steril filtered sample buffer is supplied with each marker, for composition please see below) or, e.g. for subsequent labelling of DNA fragments, in TE buffer (10 mM Tris/HCl pH 7.5 and 1 mM EDTA). Add the volume of buffer needed for your application to the lyophilized DNA and incubate for 15 min at room temperature.

Buffer volume	50 μ l	100 μ l	250 μ l	500 μ l	1000 μ l
μ g DNA in 1 μ l	1	0.5	0.2	0.1	0.05
μ g DNA in 5 μ l	5	2.5	1	0.5	0.25
μ g DNA in 10 μ l	10	5	2	1	0.5

Sample application:

for UV detection after EtBr. staining:

use 0.5 - 1.0 μ g DNA fragments per lane

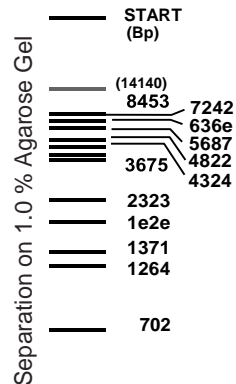
for detection using signal integrating systems after EtBr. staining:

use 0.1 - 0.5 μ g per lane

Storage:

Store lyophilized DNA fragments at -20 °C, store resuspended DNA fragments at -20 °C; avoid repeated thaw/freeze cycles (>10fold), if needed, aliquot the markerfragments.

1 x sample buffer (TE/G-buffer)	
Tris/HCl pH 7.5	10 mM
Sodium-acetate	5 mM
EDTA	2 mM
Glycerol	10 % (w/v)
Bromophenolblue	0.03 % (w/v)
Xylene Cyanol FF	0.02 % (w/v)



SERVA DNA Standard pBR 328 Mix, lyophilized

Cat. No.: 39302.01

Qty.: 1 x 50 µg

Fragment sizes (in Bp): 2.176, 1.766, 1.230, 1.033, 653, 517, 453, 394, 298, 234, 220, 154

How to dissolve the lyophilized DNA fragments:

Depending on the usage of the marker dissolve the DNA fragments in 1 x sample buffer (1 ml steril filtered sample buffer is supplied with each marker, for composition please see below) or, e.g. for subsequent labelling of DNA fragments, in TE buffer (10 mM Tris/HCl pH 7.5 and 1 mM EDTA). Add the volume of buffer needed for your application to the lyophilized DNA and incubate for 15 min at room temperature.

Buffer volume	50 µl	100 µl	250 µl	500 µl	1000 µl
µg DNA in 1 µl	1	0.5	0.2	0.1	0.05
µg DNA in 5 µl	5	2.5	1	0.5	0.25
µg DNA in 10 µl	10	5	2	1	0.5

Sample application:

for UV detection after EtBr. staining:

use 0.5 - 1.0 µg DNA fragments per lane

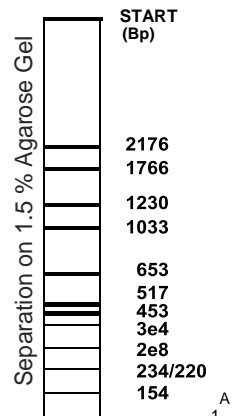
for detection using signal integrating systems after EtBr. staining:

use 0.1 - 0.5 µg per lane

Storage:

Store lyophilized DNA fragments at -20 °C, store resuspended DNA fragments at -20 °C; avoid repeated thaw/freeze cycles (> 10fold), if needed, aliquot the marker fragments.

1 x sample buffer (TE/G-buffer)	
Tris/HCl pH 7.5	10 mM
Sodium-acetate	5 mM
EDTA	2 mM
Glycerol	10 % (w/v)
Bromophenolblue	0.03 % (w/v)
Xylene Cyanol FF	0.02 % (w/v)



SERVA DNA Standard pBR 322 x HaeIII, lyophilized

Cat. No.: 39303.01

Qty.: 1 x 50 µg

Fragment sizes (in Bp): 587, 540, 502, 458, 434, 267, 234, 213, 192, 184, 124, 123, 104, 89, 80, 64, 57, 51, 21, 18, 11, 8

How to dissolve the lyophilized DNA fragments:

Depending on the usage of the marker dissolve the DNA fragments in 1 x sample buffer (1 ml steril filtered sample buffer is supplied with each marker, for composition please see below) or, e.g. for subsequent labelling of DNA fragments, in TE buffer (10 mM Tris/HCl pH 7.5 and 1 mM EDTA). Add the volume of buffer needed for your application to the lyophilized DNA and incubate for 15 min at room temperature.

Buffer volume	50 µl	100 µl	250 µl	500 µl	1000 µl
µg DNA in 1 µl	1	0.5	0.2	0.1	0.05
µg DNA in 5 µl	5	2.5	1	0.5	0.25
µg DNA in 10 µl	10	5	2	1	0.5

Sample application:

for UV detection after EtBr. staining:

use 0.5 - 1.0 µg DNA fragments per lane

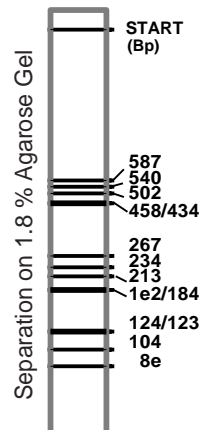
for detection using signal integrating systems after EtBr. staining:

use 0.1 - 0.5 µg per lane

Storage:

Store lyophilized DNA fragments at -20 °C, store resuspended DNA fragments at -20 °C; avoid repeated thaw/freeze cycles (>10fold), if needed, aliquot the markerfragments.

1 x sample buffer (TE/G-buffer)	
Tris/HCl pH 7.5	10 mM
Sodium-acetate	5 mM
EDTA	2 mM
Glycerol	10 % (w/v)
Bromophenolblue	0.03 % (w/v)
Xylene Cyanol FF	0.02 % (w/v)



SERVA DNA Standard 100 Bp DNA Ladder equimolar, lyophilized

Cat. No.: 39311.01 Qty.: 1 x 50 µg

Fragment sizes (in Bp): 1.000, 900, 800, 700, 600, 500 (2x), 400, 300, 200, 100

How to dissolve the lyophilized DNA fragments:

Depending on the usage of the marker dissolve the DNA fragments in 1 x sample buffer (1 ml steril filtered sample buffer is supplied with each marker, for composition please see below) or, e.g. for subsequent labelling of DNA fragments, in TE buffer (10 mM Tris/HCl pH 7.5 and 1 mM EDTA). Add the volume of buffer needed for your application to the lyophilized DNA and incubate for 15 min at room temperature.

Buffer volume	50 µl	100 µl	250 µl	500 µl	1000 µl
µg DNA in 1 µl	1	0.5	0.2	0.1	0.05
µg DNA in 5 µl	5	2.5	1	0.5	0.25
µg DNA in 10 µl	10	5	2	1	0.5

Sample application:

for UV detection after EtBr. staining:

use 0.3 - 0.8 µg DNA fragments per lane

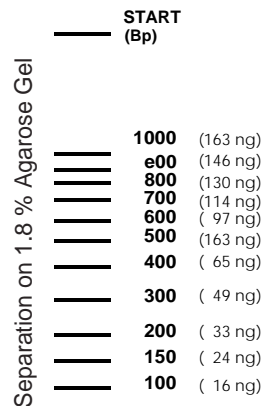
for detection using signal integrating systems after EtBr. staining:

use 0.05 - 0.3 µg per lane

Storage:

Store lyophilized DNA fragments at -20 °C, store resuspended DNA fragments at -20 °C; avoid repeated thaw/freeze cycles (>10fold), if needed, aliquot the marker fragments.

1 x sample buffer (TE/G-buffer)	
Tris/HCl pH 7.5	10 mM
Sodium-acetate	5 mM
EDTA	2 mM
Glycerol	10 % (w/v)
Bromophenolblue	0.03 % (w/v)
Xylene Cyanol FF	0.02 % (w/v)



SERVA DNA Standard 100 Bp DNA Ladder extended, lyophilized

Cat. No.: 39312.01 Qty.: 1 x 50 µg

Fragment sizes (in Bp): 5.000, 4.000, 3.000, 2.500, 2.000,
1.500, 1.000, 900, 800, 700, 600, 500 (2x), 400, 300, 200, 100

How to dissolve the lyophilized DNA fragments:

Depending on the usage of the marker dissolve the DNA fragments in 1 x sample buffer (1 ml steril filtered sample buffer is supplied with each marker, for composition please see below) or, e.g. for subsequent labelling of DNA fragments, in TE buffer (10 mM Tris/HCl pH 7.5 and 1 mM EDTA). Add the volume of buffer needed for your application to the lyophilized DNA and incubate for 15 min at room temperature.

Buffer volume	50 µl	100 µl	250 µl	500 µl	1000 µl
µg DNA in 1 µl	1	0.5	0.2	0.1	0.05
µg DNA in 5 µl	5	2.5	1	0.5	0.25
µg DNA in 10 µl	10	5	2	1	0.5

Sample application:

for UV detection after EtBr. staining:

use 0.5 - 0.8 µg DNA fragments per lane

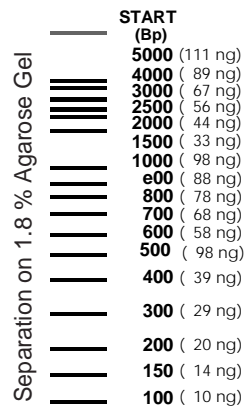
for detection using signal integrating systems after EtBr. staining:

use 0.2 - 0.5 µg per lane

Storage:

Store lyophilized DNA fragments at -20 °C,
store resuspended DNA fragments at -20 °C;
avoid repeated thaw/freeze cycles (>10fold),
if needed, aliquot the markerfragments.

1 x sample buffer (TE/G-buffer)	
Tris/HCl pH 7.5	10 mM
Sodium-acetate	5 mM
EDTA	2 mM
Glycerol	10 % (w/v)
Bromophenolblue	0.03 % (w/v)
Xylene caynol FF	0.02 % (w/v)



SERVA DNA Standard 100 Bp DNA Ladder equalized, lyophilized

Cat. No.: 39313.01

Qty.: 1 x 20 µg

Fragment sizes (in Bp): 1.000, 900, 800, 700, 600, 500 (2x), 400, 300, 200, 100

How to dissolve the lyophilized DNA fragments:

Depending on the usage of the marker dissolve the DNA fragments in 1 x sample buffer (1 ml steril filtered sample buffer is supplied with each marker, for composition please see below) or, e.g. for subsequent labelling of DNA fragments, in TE buffer (10 mM Tris/HCl pH 7.5 and 1 mM EDTA). Add the volume of buffer needed for your application to the lyophilized DNA and incubate for 15 min at room temperature.

Buffer volume	50 µl	100 µl	250 µl	500 µl	1000 µl
µg DNA in 1 µl	0.4	0.2	0.08	0.04	0.02
µg DNA in 5 µl	2	1	0.4	0.2	0.1
µg DNA in 10 µl	4	2	0.8	0.4	0.2

Sample application:

for UV detection after EtBr. staining:

use 0.2 - 0.5 µg DNA fragments per lane

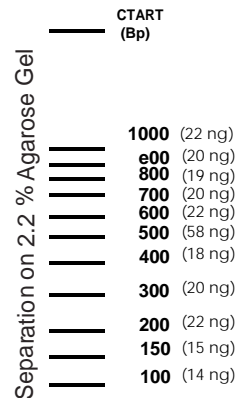
for detection using signal integrating systems after EtBr. staining:

use 0.05 - 0.2 µg per lane

Storage:

Store lyophilized DNA fragments at -20 °C, store resuspended DNA fragments at -20 °C; avoid repeated thaw/freeze cycles (>10fold), if needed, aliquot the markerfragments.

1 x sample buffer (TE/G-buffer)	
Tris/HCl pH 7.5	10 mM
Sodium-acetate	5 mM
EDTA	2 mM
Glycerol	10 % (w/v)
Bromophenolblue	0.03 % (w/v)
Xylene Cyanol FF	0.02 % (w/v)



AMSBIO | www.amsbio.com | info@amsbio.com

UK & Rest of the World
184 Park Drive, Milton Park
Abingdon OX14 4SE, UK
T: +44 (0)1235 828 200
F: +44 (0) 1235 820 482

North America
1035 Cambridge Street,
Cambridge, MA 02141
T: +1 (617) 945-5033 or
T: +1 (800) 987-0985
F: +1 (617) 945-8218

Germany
Bockenheimer Landstr. 17/19
60325 Frankfurt/Main
T: +49 (0) 69 779099
F: +49 (0) 69 13376880

Switzerland
Centro Nord-Sud 2E
CH-6934 Bioggio-Lugano
T: +41(0) 91 604 55 22
F: +41(0) 91 605 17 85