

Data Sheet

p300 (1046-1163)

Human, recombinant, N-terminal His- tag
 Catalog #: 31118
 Lot#: 120524 Conc.: 2.36 mg/ml

Formulated in: 45 mM Tris-HCl, pH 8.0,
 124 mM NaCl, 2.4 mM KCl, 225 mM
 Imidazole, 3 mM DTT, 10% glycerol.

Stability: >6 months at -80 °C

References:

1. Gui, Y., *et al.*, *Nat. Genet.* 2011 Aug 7;
43(9) : 875 – 878.
2. Morin, R.D., *et al.*, *Nature.* 2011 Jul 27;
476(7360) : 298 – 303.
3. Zhao, Z., *et al.*, *Brain Res. Bull.* 2011
 Oct 10; **86(3-4)** : 189 – 194.

Description:

Human bromodomain E1A binding protein p300, also known as EP300, KAT3B, or RSTS2, GenBank Accession No. NM_001429, a.a. 1046-1163, with N-terminal His-tag, MW=15.1 kDa, expressed in an *E. coli* expression system.

Application:

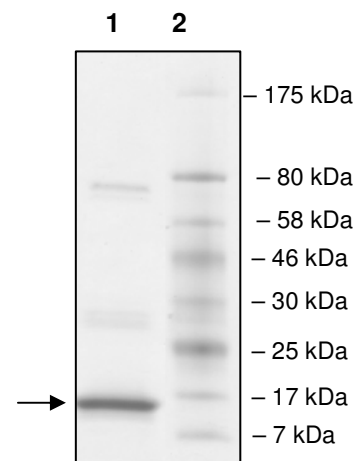
Useful for the study of enzyme kinetics, screening inhibitors, and selectivity profiling.

Quality Assurance

4-20% SDS-PAGE Coomassie staining

Lane 1:
9 µg EP300
Lane 2:
Protein Marker

MW: 15.1 kDa
Purity: ≥83%



OUR PRODUCTS ARE FOR RESEARCH USE ONLY. NOT FOR DIAGNOSTIC OR THERAPEUTIC USE.

AMSBIO | www.amsbio.com | info@amsbio.com

 **UK & Rest of the World**
 184 Park Drive, Milton Park
 Abingdon OX14 4SE, UK
 T: +44 (0)1235 828 200
 F: +44 (0) 1235 820 482

 **North America**
 1035 Cambridge Street,
 Cambridge, MA 02141
 T: +1 (617) 945-5033 or
 T: +1 (800) 987-0985
 F: +1 (617) 945-8218

 **Germany**
 Bockenheimer Landstr. 17/19
 60325 Frankfurt/Main
 T: +49 (0) 69 779099
 F: +49 (0) 69 13376880

 **Switzerland**
 Centro Nord-Sud 2E
 CH-6934 Bioggio-Lugano
 T: +41(0) 91 604 55 22
 F: +41(0) 91 605 17 85

Protein Sequence:

MHHHHHHKKKIFKPEELRQALMPTLEALYRQDPESLPFRQPVDPQLLGIPDYFDIVKSP
MDLSTIKRKLDTGQYQEPWQYVDDIWLMFNNAWLYNRKTSRVYKYCSKLSEVFEQEI
DPVMQSLGYC

OUR PRODUCTS ARE FOR RESEARCH USE ONLY. NOT FOR DIAGNOSTIC OR THERAPEUTIC USE.

AMSBIO | www.amsbio.com | info@amsbio.com

 **UK & Rest of the World**
184 Park Drive, Milton Park
Abingdon OX14 4SE, UK
T: +44 (0)1235 828 200
F: +44 (0) 1235 820 482

 **North America**
1035 Cambridge Street,
Cambridge, MA 02141
T: +1 (617) 945-5033 or
T: +1 (800) 987-0985
F: +1 (617) 945-8218

 **Germany**
Bockenheimer Landstr. 17/19
60325 Frankfurt/Main
T: +49 (0) 69 779099
F: +49 (0) 69 13376880

 **Switzerland**
Centro Nord-Sud 2E
CH-6934 Bioggio-Lugano
T: +41(0) 91 604 55 22
F: +41(0) 91 605 17 85