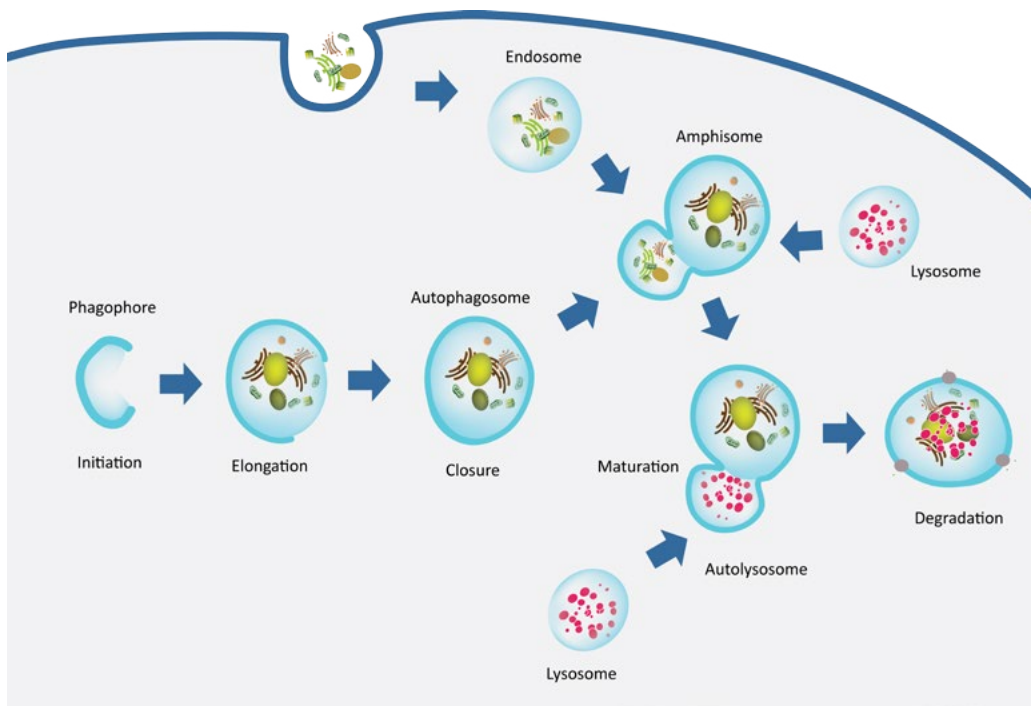


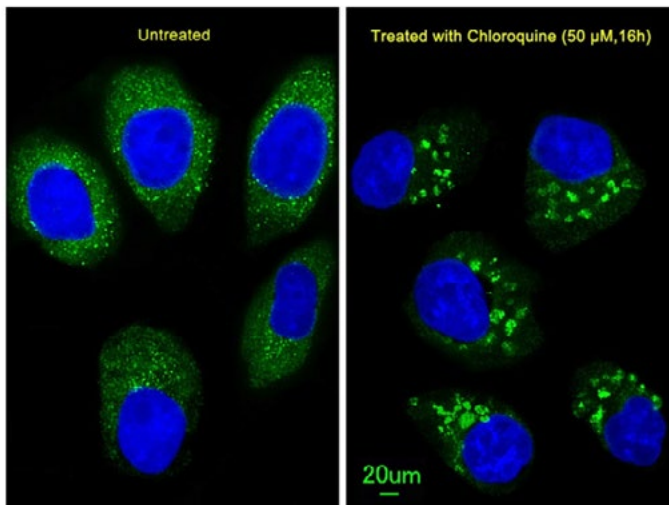
# Autophagy

Antibodies | Kits | Proteins | cDNA | Lentiviral Particles

Autophagy is a cellular process describing the degradation of cellular components, allowing them to be recycled. This is the way an organism maintains homeostasis and normal functioning: by degrading and turning over proteins and other organelles.



Autophagy enables cells to survive internal and external stresses, for example nutrient deprivation, or an infection from another organism. Targeting autophagy as a therapeutic method is of growing interest to many researchers specializing in a diverse range of diseases from bacterial and viral infections to cancer and more recently in neurodegeneration and other ageing-related diseases.




Immunofluorescent analysis of U251 cells, using LC3 Antibody (APG8B, N-term) (Cat.#AMS.AP1802a). U251 cells (right) were treated with Chloroquine (50 uM, 16h). AMS.AP1802a was diluted at 1:100 dilution. Alexa Fluor 488-conjugated goat anti-rabbit IgG at 1:400 dilution was used as the secondary antibody (green). DAPI was used to stain cell nuclei (blue).

# Autophagy Products

AMSBIO has a wide range of products related to autophagy for almost every gene and target of interest. AMSBIO also provides an extensive collection of autophagy antibodies. From the industry standard autophagy antibody APG8 (MAPLC3) to the newest autophagy antibodies such as LAMP and APG1, AMSBIO is able to provide the most relevant, qualified antibodies for autophagy research.

- ✓ **ATG**
- ✓ **MAP1**
- ✓ **GABARAP**
- ✓ **WIPI**
- ✓ **ULK**
- ✓ **SQSTM1**
- ✓ **p62**
- ✓ **NBR1**
- ✓ **Optineurin**
- ✓ **Beclin-1**
- ✓ **mTOR**
- ✓ **LAMP 1 & 2**
- ✓ **LC3**
- ✓ **Other targets available**



**3'-UTR cDNA Clones**  
**Cell Lysates**  
**DNA Kits**  
**ELISA Kits**  
**Full Length cDNA Clones**  
**Monoclonal Antibodies**  
**Polyclonal Antibodies**  
**PCR Primer Pairs**  
**Peptides and Blocking Peptides**  
**Recombinant Proteins**  
**siRNA and siRNA Plasmids**  
**Lentiviral Particles**  
**Adenovirus**

 **UK & Rest of the World**  
184 Park Drive, Milton Park  
Abingdon OX14 4SE, U.K.  
T: +44 (0) 1235 828 200  
F: +44 (0) 1235 820 482

 **North America**  
1035 Cambridge Street,  
Cambridge, MA 0 2141.  
T: +1 (617) 945-50 33 or  
T: +1 (800) 987-0985  
F: +1 (617) 945-8218

 **Germany**  
Bockenheimer Landstr. 17/ 19  
60325 Frankfurt/Main  
T: +49 (0) 69 779099  
F: +49 (0) 69 13376880

 **Switzerland**  
Centro Nord-Sud 2E  
CH-6 934 Bioggio-Lugano  
T: +41 (0) 91 604 55 22  
F: +41 (0) 91 605 17 85