

amsbio

magtivio

MagSi-DNA Vegetal II

FAST & COST-EFFECTIVE
EXTRACTION OF GENOMIC
DNA FROM PLANTS SEEDS



DNA EXTRACTION FROM PLANT SEEDS

MagSi-DNA Vegetal II allows fast and cost-effective extraction of DNA from plant samples. The kit is optimized to extract DNA from plant samples with the highest purity and works well with plant samples rich in fats and oils, especially seeds. The extraction chemistry is validated on many different species, and can be customized to meet any specific requirements of yields, purity, working volumes. The kit can be used on any DNA extraction robot.

GENERAL FEATURES

- Short protocols, complete processing at room temperature possible (after sample lysis)
- High yield and purity
- Suitable for many genomic applications such as SNP genotyping, DNA sequencing, etc.
- Preparation time for 96 samples: 25 min after lysis

QUALITY

- Validated for many plants species, e.g. wheat, maize, sunflower, tomato, pepper, cucumber, lettuce, onion, etc.
- Compatible with oil seed crops
- High reproducibility
- Good DNA integrity
- Efficient removal of PCR inhibitors

EASY TO AUTOMATE

- Minimal accessory requirements
- KingFisher™ / MagMAX™ / BioSprint instrument protocols available on request
- Consumables for KingFisher™ Flex / 96 MagMAX™ Express-96 / BioSprint 96 available
- Compatible with most liquid handling robots (e.g. Hamilton®, TECAN®, Biomek®)
- Various magnetic separators available

FLEXIBILITY

- Suitable for small, medium and high-throughput automation
- Scalable for different sample volumes
- Shortened protocols for less demanding applications
- Small elution volumes
- Aqueous quickwash or air-dry to remove ethanol

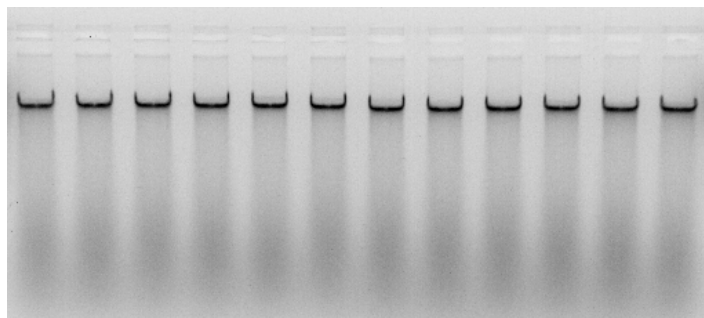


Figure 1. 1% Agarose gel showing high molecular weight DNA extracted from 12 wheat seeds

Table 1. Yield and purity obtained from different seeds

Plant species	DNA (ng/μL)	260/280	260/230
Wheat (<i>Triticum L.</i>)	54.30	1.87	2.20
Sunflower (<i>Helianthus annuus</i>)	27.97	1.72	1.47
Pepper (<i>Capsicum annuum</i>)	17.11	1.74	1.72
Cucumber (<i>Cucumis Sativus</i>)	1.69	1.80	1.49
Tomato (<i>Solanum lycopersicum</i>)	7.17	1.47	1.22
Lettuce (<i>Lactuca sativa</i>)	69.24	1.74	1.71

Description	Pack Size	Catalogue No.
MagSi-DNA Vegetal II (96 preps)	96 preps	MDKT00160096
MagSi-DNA Vegetal II (10 x 96 preps)	10 x 96 preps	MDKT00160960

